

BIGBURY DIRECTORY 2021/22



BIGBURY

BIGBURY

BIGBURY NEWS

BIGBURY NEWS

BIGBURY NEWS

BIGBURY NEWS



LOCAL COMMUNICATIONS

BIGBURY NEWS

Six issues: **FEB/MAR** (copy date 15 Jan); **APR/MAY** (copy date 15 March); **JUNE/JULY** (copy date 15 May); **AUG/SEPT** (copy date 15 July); **OCT/NOV** (copy date 15 Sept) and **DEC/JAN** (copy date 15 Nov).

FREE COPIES

Bigbury News - to 450 homes & businesses in Bigbury

ANNUAL DONATIONS

from supporters welcome/needed!

Cheques 'Bigbury News' post to
The Editor, Bigbury News, Long
Easton,

Easton, TQ7 4AN.

OR BACS details

Sort Code: **30-99-12**

Account: **29305568**

Name: **Bigbury News**

Ref: **DONATION**

FREE DOWNLOADS

www.bigburynews.com

OUR DISTRIBUTION TEAM

Bigbury News is distributed by an amazing volunteer team who deliver to every household in Bigbury.

OUR WRITERS

Regular features are submitted by several writers from the parish and beyond the sea. Letters to the Editor and Bigbury Reminiscences are warmly invited.

OUR ADVERTISERS

The colour printing of Bigbury News is partly funded by our loyal advertisers.

OUR SPONSORS

Regular donations are provided by a number of grateful **Readers** and **Bigbury Parish Council**. **Discovery Surf** and **Burgh Island Hotel** sponsor 'Beach Banter' pages. During the pandemic Bigbury News received significant support from **South Hams District Council**.



BIGBURY NEWS
APRIL/MAY 2021
Issue 465



EDITOR

The current Editor is **Louise Wainwright**. In December 2022 a new Editor will be needed.

PRODUCTION MANAGER

The current Production Manager is **Henry Wainwright**. In December 2022 a new Production Manager will be needed.

TREASURER

The current Treasurer is **Henry Wainwright**. In December 2022 a new Treasurer will be needed.

If you would like to consider taking on any of these important community roles please contact the Editor for more information. Training will be provided during a handover period before the end of 2022.

www.bigburynews.com



Advertising Rates 2021

Local, independent A4 community magazine



66mm x 96mm
Colour:
£120 per year
£20 per month
Black&White:
£60 per year
£10 per month



135mm x 96mm
Colour:
£240 per year
£40 per month
Black&White:
£120 per year
£20 per month



135mm x 188mm
Colour:
£360 per year
£60 per month
Black&White:
Unavailable

Interested in advertising?

Get in touch
07908 525663 bigburydrums@gmail.com

450 magazines published and delivered bi-monthly includes free entry in the annual Bigbury Business Directory which is distributed to all households in Bigbury and can be downloaded from www.bigburynews.com



BIGBURY DRUMS
FOR THE COMMUNITY BY THE COMMUNITY

SIGN UP

to a weekly Mail Chimp newsletter about local events and alerts, via email. Currently over 460 Subscribers. Please complete the on-line form or contact the editor.

bigburydrums@gmail.com

www.bigburynews.com

BIGBURY DRUMS & BIGBURY TV EDITOR

The Editor is **Louise Wainwright**. In December 2021 a new Editor for Bigbury Drums will be needed if it is to continue. If you would like to consider taking on this role please contact the Editor. Training will be provided during handover period before the end of 2021.

BIGBURY PARISH COUNCIL

ELECTION of COUNCILLORS

A Parish Council consists of the Chairman and no fewer than five elected Parish councillors, and a quorum of the main council committee is at least one-third of the members, or three members, whichever is the greater

Bigbury Parish Council is made up of unpaid councillors who are elected to serve for four years. The Chair of the parish council is elected from amongst existing parish councillors every year. The next Election date for the full parish council is May 2023. A casual vacancy may be filled by by-election or co-option at any time.

BPC receives funding by levying a "precept" upon the council tax paid by the residents of the parish covered by the South Hams District Council.

ACTIVITIES

BPC undertakes to provide, maintain and manage certain facilities such as those below.

- Buildings for community use, such as the Memorial Hall
- Recreational facilities such as the Play Park behind the Memorial Hall
- Cemeteries at the Church of St Lawrence.
- Litter bins
- Public seats, Public toilets
- Public clocks
- Cycle and motorcycle parking
- Maintenance of rights of way
- Guardianship of common land (such as Bigbury Village Greens
- Maintenance of war memorial at St Lawrence Church
- With the consent of DCC the BPC can provide" Bus shelters; Lighting of roads and public places; Off-street car parks; Certain traffic signs and other public notices and provision, maintenance and protection of roadside verges

CONSULTATIVE POWERS

BPC has the right to be consulted by the district, county council or unitary authority on:

- All planning applications in their areas
- Intention to provide a burial ground in the parish
- Proposals to carry out sewerage works
- Footpath and bridleway (more generally, 'rights of way') surveys
- Intention to make bye-laws in relation to hackney carriages, music and dancing, promenades, sea shore and street naming

NOTICES

Three parish **Notice Boards** at Holywell Stores, Unwind Salon in Bigbury and the bus shelter Bigbury-on-Sea.

Bigbury Community website
bigburycommunity.co.uk

Bigbury Drums
(*Mail Chimp*) frequent email newsletter - sign up
bigburynews.com

South Hams District Council planning portal on:
southhams.gov.uk

OTHER POWERS

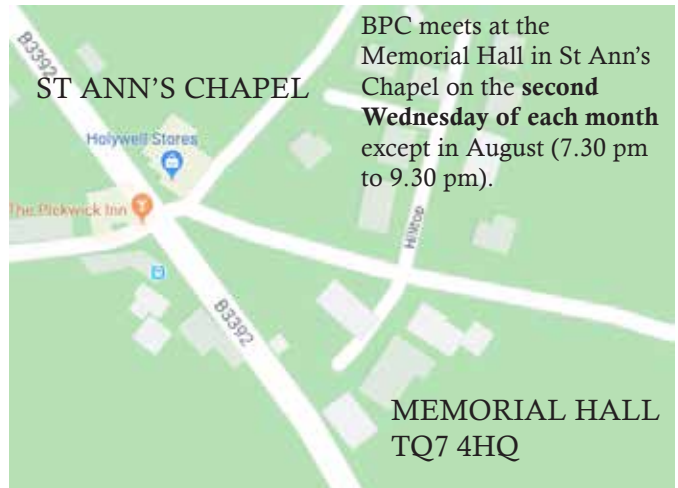
- Sponsoring public events
- Support of the arts and provision of entertainment
- Encouragement of tourism
- Providing grants to local voluntary organisations
- Funding crime prevention measures
- Funding community transport schemes
- Contribution of money towards traffic calming schemes
- Cleaning and drainage of ponds, watercourses and ditches
- Power to obtain water from any well, spring or stream
- Creation of a Neighbourhood Plan
- Power to acquire or dispose of land
- Withholding of consent to stop up unclassified highways and footpaths
- Appointing trustees of local charities
- Power to make bye-laws in regard to pleasure grounds, cycle parks, open spaces and burial grounds.

COVID SUPPORT GROUP

During periods of Lockdown you are encouraged to make use of the volunteer services of the Bigbury Covid Support Group if you need assistance obtaining essential supplies and medical prescriptions.

If you have symptoms of Covid please **STAY HOME: PROTECT THE NHS: SAVE LIVES.**

Contact CSG Manager
Cllr Stuart Watts
01548 810373



PARISHIONERS' INVOLVEMENT

Parishioners are invited to raise matters of concern in the Open Session at the beginning of the Agenda of monthly BPC Meetings. Parishioners are required to limit presentations to 3 minutes - extended at the discretion of the Chair. Parishioners may write to the Parish Clerk requesting an item to be included on the Agenda if a formal decision is required on a topic. Formal decisions will only be made on Agenda items.

BIGBURY PARISH COUNCIL

CHAIRMAN Beth Huntley
cllhuntley.bigburypc@gmail.com
01548 810385

VICE CHAIRMAN George Rosevear
cllrgRosevear.bigburypc@gmail.com
01548 831427

COUNCILLORS

Cathy Case 01548 810079
Cllrccase.bigburypc@gmail.com

Valerie Scott 01548 810336
Cllrscott.bigburypc@gmail.com

Sharon Smith 01548 810115
CllrSmith.bigburypc@gmail.com

Stuart Watts 01548 8101373
CllrsWatts.bigburypc@gmail.com

Keely Holland 01548 810891
Cllrholland.bigburypc@gmail.com

PARISH CLERK Ian Bramble
clerk.bigburypc@gmail.com

PARISH WARDENS

TREE WARDEN
Trish Bagley 01548 810053
trishbagley@icloud.com

FOOTPATH WARDENS

Trish Bagley as above
Norman Botton 01548 810385
normanbotton@hotmail.co.uk

PLAY PARK REFURBISHMENT

Cathy Case 01548 810079
Cllrccase.bigburypc@gmail.com

NHP COMMITTEE

Valerie Scott 01548 810336
Cllrscott.bigburypc@gmail.com

The Bigbury Neighbourhood Plan is now a statutory instrument which the South Hams District Council is obliged to take into consideration when making decisions on local planning applications in Bigbury.

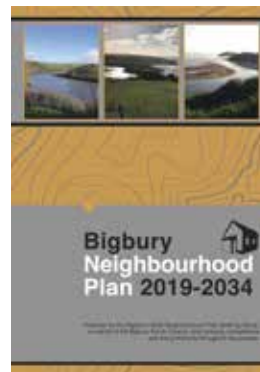
The document contains **Policies** and the **Development Boundaries** around Bigbury, Bigbury-on-Sea and St Ann's Chapel. It documents our local heritage assets and contains much historical information. Download NHP from www.bigburynews.com/parish-council

VISION:

'To conserve and enhance the unique and special character of our rural and coastal community retaining its heritage significance and its outstanding natural beauty, whilst considering sensitive enhancements for the benefit of residents and visitors'.

OBJECTIVES

- To conserve and enhance the outstanding natural beauty of the countryside, coastline, beaches and the Avon estuary.
- To conserve and enhance the designated and non-designated heritage assets within the parish.
- To conserve and enhance existing woodlands, trees, hedgerows, Devon banks, green spaces and other important features of our natural landscape which are important to the overall environment and have important biodiversity value.
- To support the agricultural economy of the parish and to encourage environment friendly farming methods which support biodiversity and which retain existing field boundaries and hedgerows.
- To conserve and enhance the biodiversity value of the area and to protect and enhance the Green Infrastructure of the parish.
- To restrict new housing development to that which is essential to meeting local needs and only on sites within the existing village settlement boundaries or on the allocated site at St Ann's Chapel.
- To maintain the vitality and viability of existing villages within the parish by retaining existing and encouraging new community facilities.
- To promote a healthy and socially inclusive community by
- maintaining and enhancing our open space, recreation, leisure and sporting facilities.
- To retain existing and provide new tourist facilities, if appropriate, ensuring that any new facilities are provided in a manner which preserves the beauty and unspoilt nature of the countryside, the coastline and the beaches.
- To retain existing employment uses and to provide new facilities for local employment, providing this does not cause harm to the AONB and is in a sustainable location.
- Any development should be of high quality and sympathetic to the character of the local area.
- To retain the existing network of local roads and footpaths and encourage the provision of new footpaths, bridleways and cycle ways to provide better access to the countryside and increased safety for pedestrians, cyclists and horse riders.
- To seek opportunities for improving infrastructure to make the parish more sustainable.



DEVELOPMENT BOUNDARIES

Above: St Ann's Chapel

Next page - Above left:

Bigbury-on-Sea

Next page - Above right

Bigbury

BIGBURY NHP COMMITTEE

Terms of Reference approved by Bigbury Parish Council, 14 October 2020 - see

www.bigburycommunity.co.uk

The BNHPC is acting on behalf of Bigbury Parish Council and is composed of at least two elected members plus a maximum of four members of the community (total six members). The Chair and Vice-Chair are appointed by the Bigbury Parish Council and should have a good working knowledge of the Neighbourhood Plan. Other members represent different parts of the parish. The composition of the membership of the committee will be reviewed in March 2022.

Membership as approved on 14 October 2020:

Cllr Valerie Scott – Chair
 Cllr Stuart Watts – Vice-Chair
 Jill Gubbins
 Jo Simes
 Simon Bronstein

MAIN OBJECTIVES (see website for full list)

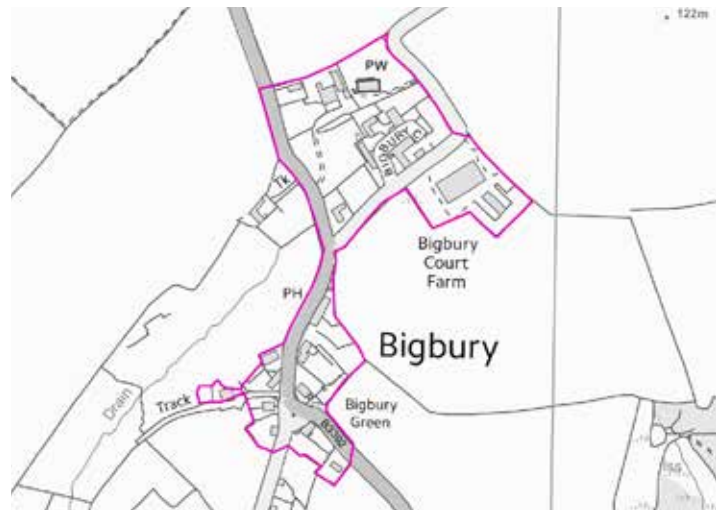
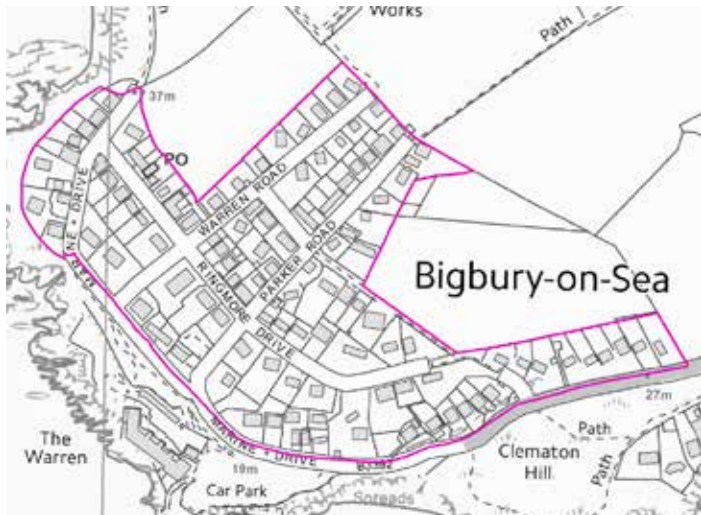
To seek to ensure the consistent and comprehensive implementation of the Bigbury Neighbourhood Plan.

To seek to engage with the community in achieving the delivery of the Bigbury Neighbourhood Plan.

MEETINGS

BNPC will meet regularly, as determined by the Chairperson and according to specific planning needs.

Recommendations on specific planning applications or for amendments to the original Neighbourhood Plan will be reported to Bigbury Parish Council at one of its regular meetings.



The full Bigbury Policies (BP) can be found in the Bigbury Neighbourhood Plan which can be downloaded from: www.bigburynews.com/council

Policy BP2 (Fig 6, 7, 8 above)

Other housing development

a) Replacement housing
Replacement of existing dwellings, providing these are not shown in the Plan as statutory or local heritage assets, will generally be supported providing the proposed development accords with the Policy BP7 – General design principles for new development and other relevant Policies of the Plan.

b) Extensions to existing dwellings
Extensions to existing dwellings will be supported providing these are sympathetic to the design of the host dwelling and meet the relevant criteria set out in Policy BP7 – General design principles for new development and other relevant Policies of the Plan.

c) Additional dwellings
Any additional dwellings should be contained within the existing settlement boundaries of St Ann's Chapel, Bigbury Village or Bigbury on Sea and should meet the criteria set out in Policy BP7 – General design principles for new development and other relevant Policies of the Plan

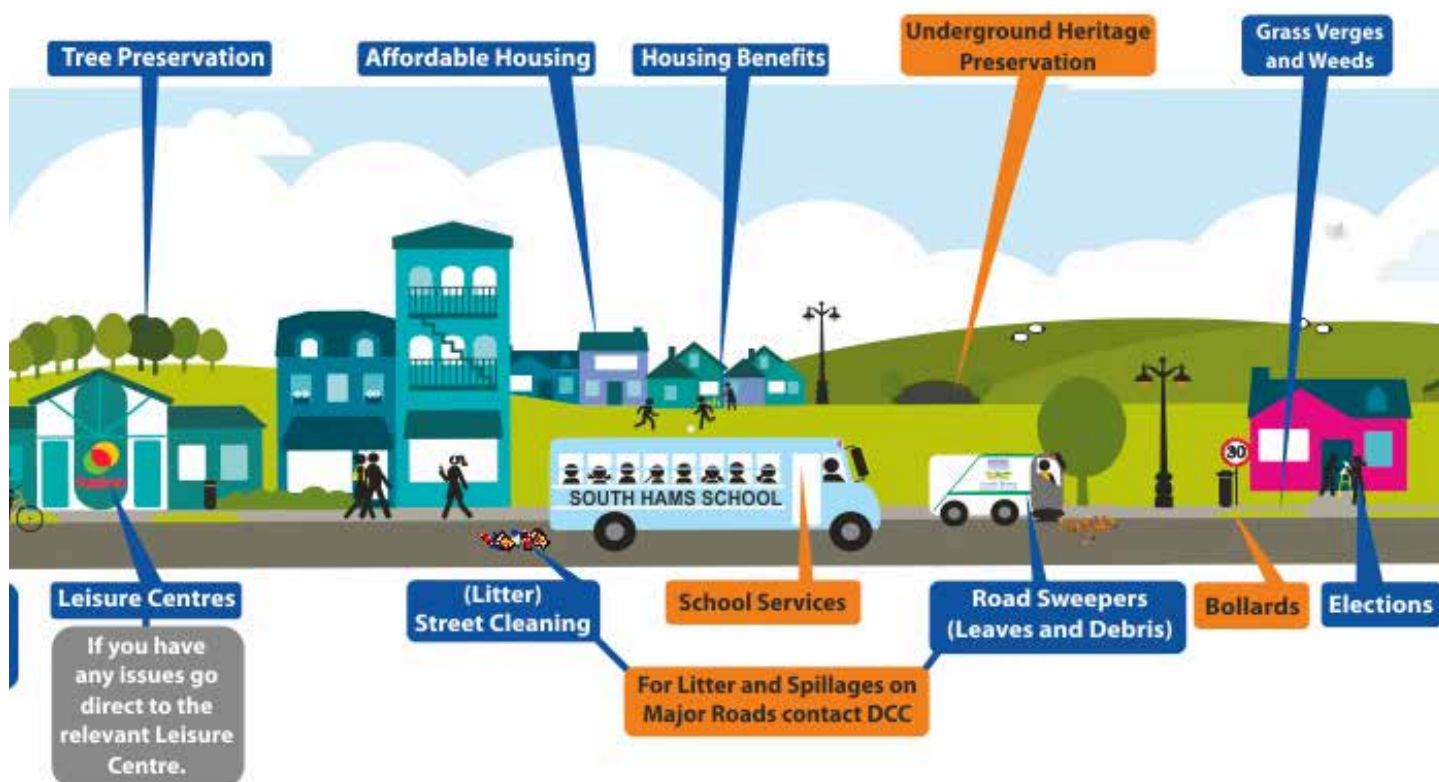
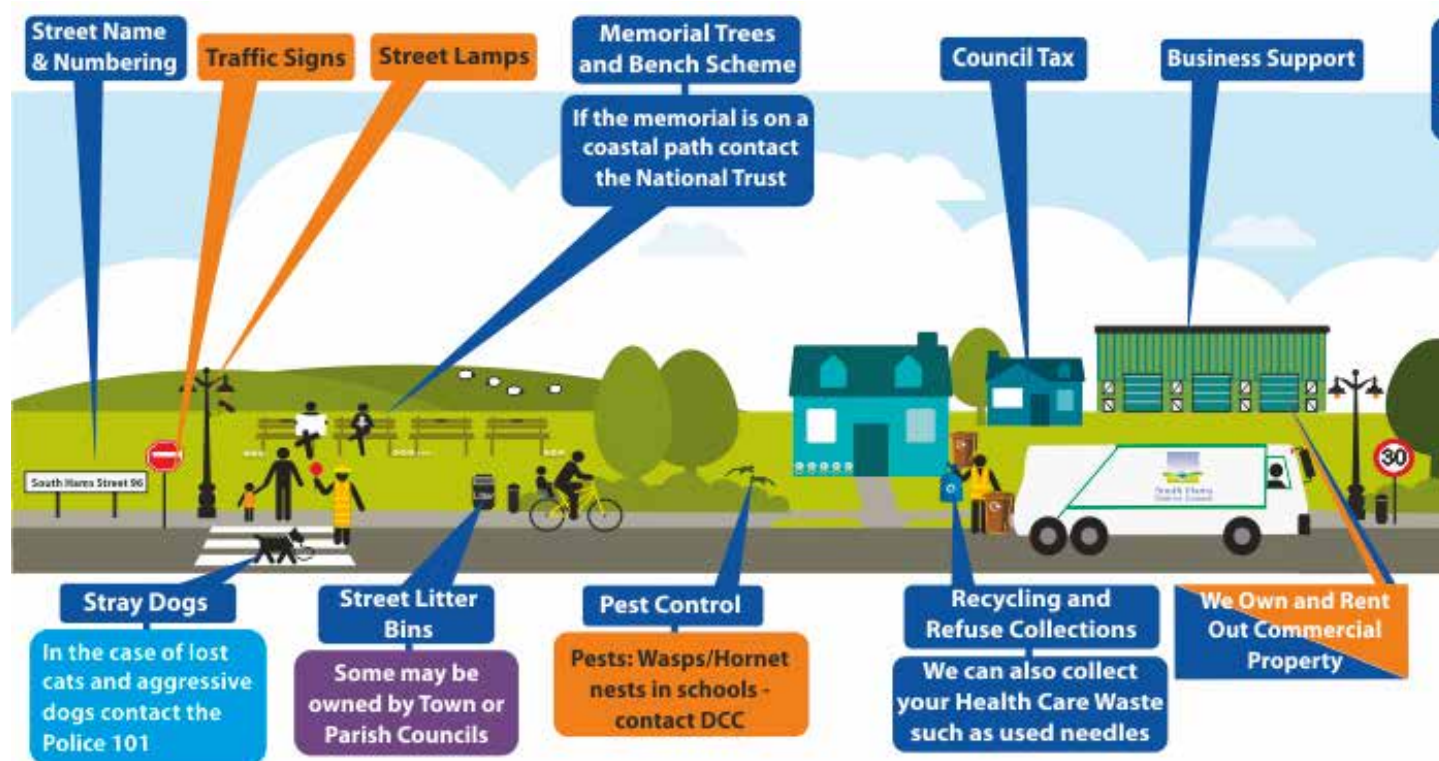
Policy BP17 (Fig 12 left)

Footpaths and cycle tracks

Existing footpaths within the parish will be protected and enhanced where possible and opportunities will be sought and supported to provide new footpaths (whether public rights of way or permissive paths), bridleways and cycle tracks to link villages and to provide more access to the Avon Estuary and the countryside.

Fig (left) **Bigbury Rights of Way**

SOUTH HAMS DISTRICT COUNCIL

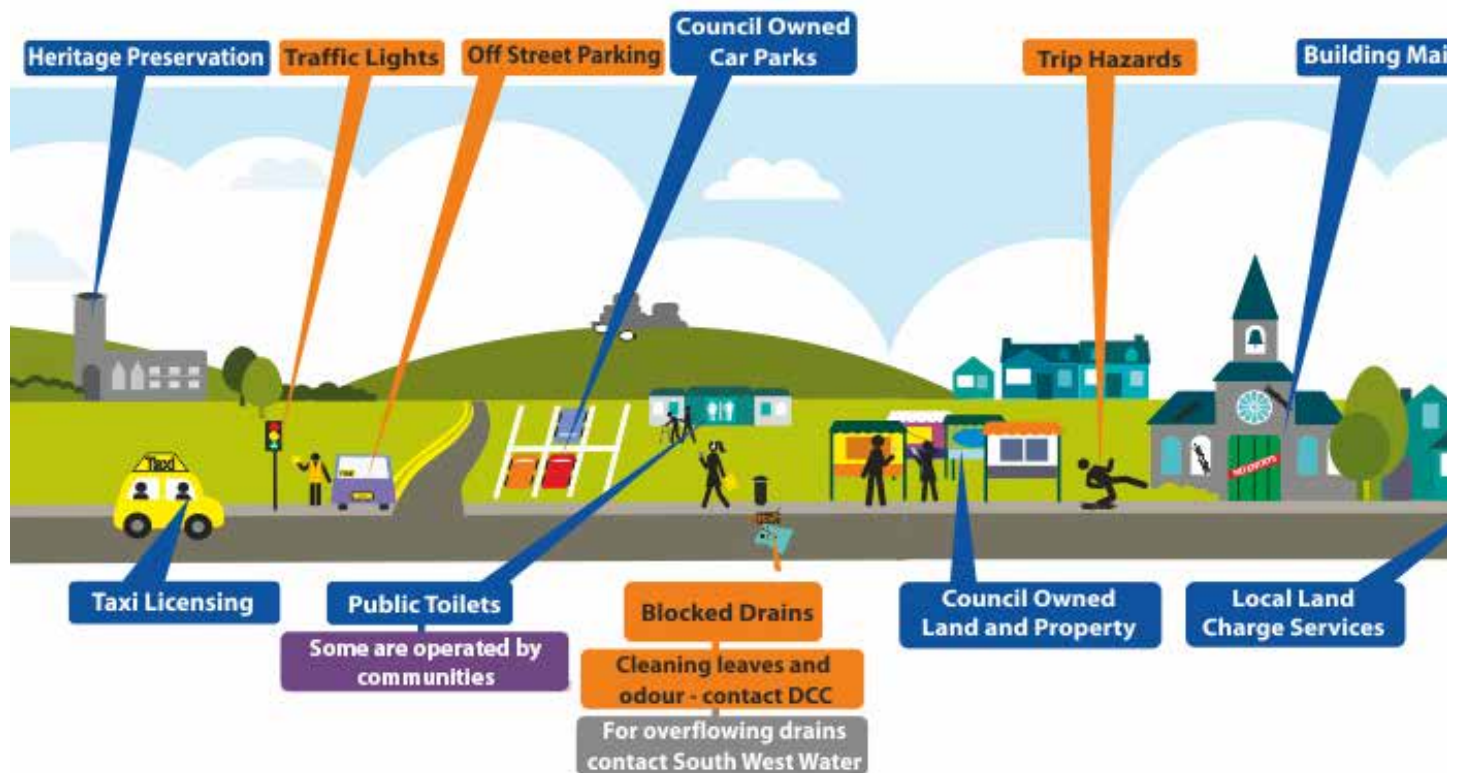
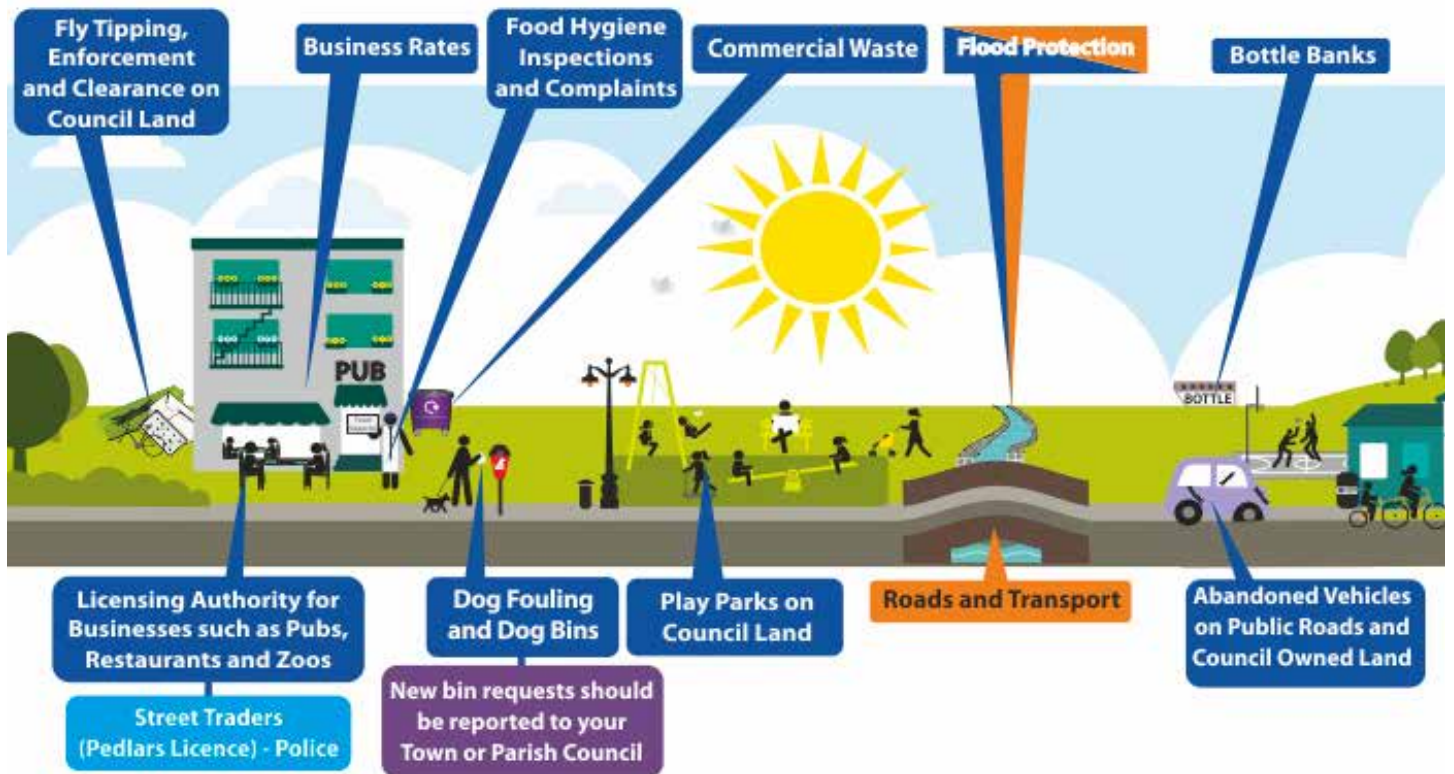


www.southhams.gov.uk



Our representative on South Hams District Council is **Cllr Bernard Taylor**. Cllr.Bernard.Taylor@southhams.gov.uk The SHDC representative often attends Bigbury Parish Council meetings, where he will report on all SHDC initiatives of significance to Bigbury. Bigbury is in the **Ward of Charterlands**. The responsibilities of SHDC include local planning, council housing, sports and leisure facilities, refuse collection, protecting trees of significant public amenity value and street cleaning. SHDC is further divided into civil parishes, which have 'parish councils' such as Bigbury Parish Council. For full details of SHDC services - visit their website above.

SOUTH HAMS DISTRICT COUNCIL



Key services provided by South Hams District Council

Some Devon County Council Services which are often mistaken with the services provided by South Hams

Services provided by Town and Parish Councils

SHDC SERVICES

PARKING

SHDC own and manage the car park at Bigbury-on-Sea and the toilets near Discovery Surf. Contact-less parking tickets can be obtained using the RINGO App which you download onto your smart phone.



Bigbury on Sea car park
Ringo Code: 3476

PARKING PERMIT

Apply for a Bigbury Rural parking permit for the car park at Bigbury-on-Sea via the above website. Cost: 6mth £380 and 12mth £576

PARKING FEES

Long Stay (24 Hours Max) 24 hours
£12.00.

Every day 8.00 a.m. to 6.00 p.m.

1 hour	£1.50
2 hours	£2.70
3 hours	£4.20
4 hours	£5.50

FREE PARKING

The free parking spaces near **Sedgewell Slipway** and near the bus shelter and the flower boat are owned by **Bigbury Parish Council**.

DISABLED FACILITIES GRANT

This grant is means-tested, which will help people with disabilities to live safely in their home. It involves an assessment from an Occupational Therapist who may recommend certain adaptations that could benefit you.

Contacts: 0345 1551007*

csc.caredirect@devon.gov.uk

Text Message: 07773 333231

Textphone (for those with hearing difficulties): 0845 1551020*

HOME REPAIRS

If you are a homeowner, landlord or own an empty property, SHDC may be able to help you with the cost of essential repairs to your property through a low cost loan scheme. This could include: installing or upgrading heating systems, roof and structural repairs, replacing old and inefficient windows and doors, electrical and plumbing repairs or any other issues that are essential to keeping you warm, safe and dry in your home.

KERBSIDE COLLECTION

Weekly household collections are made from every house in Bigbury. The collection date differs for various postcodes in Bigbury. Check your collection dates for the black and brown bins on this website:

<https://southhams.fccenvironment.co.uk/mycollections>

IMPORTANT INFORMATION ON THE NEW SUPER SERVICE



New containers

The new service will be rolled out throughout spring 2021, a collection round at a time. Each household will receive 2 recycling boxes, 1 reusable recycling sack and 2 food waste caddies (one for in the kitchen and one for outdoor storage).

Start using your new containers as soon as you receive them and put them out on your next collection day.



Recycling more often

Once you receive your new containers, we will collect your recycling and food waste every week.



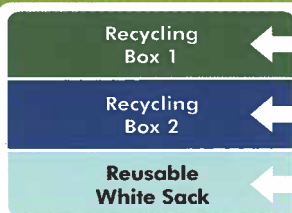
New items to recycle

Once you receive your new containers, you can put plastic pots, tubs and trays, glass, printer cartridges and household batteries in your recycling, along with all the usual items.



Separate food waste collection

Once you receive your new containers, food waste will be collected separately from garden waste. This means we can collect food waste more often, reducing the time you have to store smelly waste.



Sorting your recycling

On average, 15% of items put in the clear and blue sacks aren't recyclable. For the new service, you will need to sort your recycling by type into 3 containers. Sorting the recycling will help ensure we only collect the recyclable items. The new recycling vehicles have a compartment for each type of recycling.

SHDC PLANNING APPLICATIONS

Each month, Bigbury Parish Council receives a notice from SHDC regarding all new planning applications, requesting Councillors to visit the Applicant and come to a decision whether to support the application or not. There is a deadline for comments from both the BPC and any other interested party. Interested parties may visit the SHDC Planning portal and search for the Application Reference. Full drawings and descriptions, together with comments from statutory authorities can be viewed on the website. Comments from BPC and interested parties are published on this portal. Guidelines are also provided about what constitutes a lawful objection. Any comments which do not meet these guidelines will be redacted (removed).

Bigbury Drums (Mail Chimp) aims to alert subscribers to relevant local planning applications with a direct click link through to the SHDC website.

<http://apps.southhams.gov.uk/PlanningSearchMVC/>

HOW TO SORT YOUR RECYCLING



OTHER COLLECTIONS

Garden waste

Once you receive your new containers, your existing brown bin will be for **garden waste only**. The bin will still be emptied once a fortnight on the alternate week to your refuse bin. This service is only offered to properties with wheelie bins.



Refuse

Refuse collections will not change so keep on using your grey bin or seagull sack which will be collected once a fortnight.



Assisted Collections and Clinical Waste

Assisted collections will continue as normal, just put your new containers where you currently leave your sacks.

Clinical waste and sharps collections will continue as normal and your collection day will not change.



CLIMATE CHANGE & BIODIVERSITY EMERGENCY

After **Devon County Council** declared a Climate Emergency on 21 February 2019, the **Devon Emergency Response Group** was formed, which facilitates effective action across a broad partnership. SHDC signed up to the **Devon Climate Declaration** and declared a **Climate Change and Biodiversity Emergency** on 25 July 2019.

As part of the SHDC commitment to tackling Climate Change and habitat loss, the website below will provide hints and tips for residents, organisations and businesses in the South Hams, as well as highlighting the work that your Council is doing to reduce its own emissions. This website will also showcase the work being done by Town and Parish Councils, and Community Groups in our area.

You can follow our progress and keep up with the latest news via this website or sign up for email newsletters. Community Groups, Organisations and Town/Parish Councils can also join our Facebook Group.

www.climatechange.southhams.gov.uk/

Note:

Please see the Bigbury Climate Change group information in the Directory

DEVON COUNTY COUNCIL

Torr Quarry Recycling Centre

Kingsbridge TQ9 7QQ

0345 155 1010

Almost all other types of waste can be taken to the Recycling Centre near Kingsbridge which is run by the Devon County Council. Check what is permitted on the website below.

Opening times

	Summer (Apr to Sep)	Winter (Oct to Mar)
Monday to Friday	9:00am to 5:00pm	9:00am to 4:30pm
Saturday and Sunday	10:00am to 6:00pm	10:00am to 4:30pm



www.devon.gov.uk/wasteandrecycling/centre/torr-quarry-recycling-centre

DEVON COUNTY COUNCIL

Our representative on Devon County Council is Cllr Rufus Gilbert rufus.gilbert@devon.gov.uk The DCC representative often attends Bigbury Parish Council meetings.

Devon County Council's responsibilities include schools, social care for the elderly and vulnerable, road maintenance, libraries and trading standards

The county council's area is also administered by eight smaller authorities that have their own District, Borough or City Councils. Bigbury falls within the **South Hams District Council**.

On some matters, the County Council share responsibilities with the District and Parish councils. These include economic development and regeneration, emergency planning, tourism promotion and coastal protection.

REPORT A POT HOLE

www.devon.gov.uk/roadsandtransport/report-a-problem/report-a-pothole

Correct reporting of potholes on the **Devon County Council website** (see address above) will help to prioritise works using their limited budget. Not all potholes that are reported meet the criteria required to instigate repair DCC only repair potholes that are deeper than 40mm, wider than 300mm and have a vertical edge.

Overestimating the size of a pothole does not mean that it will be fixed but it does mean that we could end up being charged for a wasted call out. The impact of misreported potholes could ultimately lead to further reductions in the service provided

www.devon.gov.uk

DCC MOBILE LIBRARY

Usually the 2nd Tues each month

Bigbury-on-Sea

Cleveland Drive

Arrive: 12.40

Depart 13.25

Bigbury Green

Arrive: 14.00

Depart: 14.30

Report all types of problems on **Roads and Transport** to the **Devon County Council** on their "**Report a Problem**" page.

CONNECTIVITY

Connectivity is poor in many parts of Bigbury. An HM Government funded authority is working with a new contractor, **Airband**, in Bigbury to roll out. The timetable for works to commence has yet to be announced but it is unlikely to commence until 2022 at the earliest and it could be later than this.

In the meantime, if you have even a poor 4G mobile signal you can apply to CDS via the website, for a voucher worth up to £800 to help boost the 4G mobile system which can be used for internet connections.

www.connectingdevonandsomerset.co.uk/

Bush Broadband/Radio Fibre is a local Internet Service Provider currently developing a **Fixed Wireless Access** system. This technology can probably reach about 75% of properties in Bigbury.

Properties in deep valleys are more difficult to reach with this technology because they are not in Line of Sight of the transmitters.

Some residents have used the Elon Musk's satellite service, **Starlink**. Although expensive, it has proved reliable and reaches into those deep corners of Bigbury.



DEVON CLIMATE EMERGENCY

www.devonclimateemergency.org.uk/interimcarbonplan/

The science is clear: we are in a climate emergency and need to act now to reduce carbon emissions to limit global temperature rise to below 1.5°C. Devon County Council, has taken the lead by developing a Devon Carbon Plan to enable the country to reach Net Zero

Since the industrial revolution, human activities, such as the burning of Fossil Fuels for heat, electricity and transportation, deforestation and intensive agricultural practices, have been changing the balance of the Greenhouse Effect. The increased levels of GHGs mean we are trapping more heat and causing our planet to warm at an unprecedented rate.

This warming is causing more extreme storms, droughts, heat waves, melting ice, ocean acidification and rising sea levels. The impacts of these changes are widespread and immense in scale. The Figure opposite, summarises these changes to the climate system and the impacts arising: from flooding to food insecurity, health implications, international migration and unparalleled loss of biodiversity. Climate change is not just an environmental problem. It has been described as "humanity's greatest threat" by Sir David Attenborough; as the "biggest threat to the global economy" by the World Economic Forum; as the "greatest threat to global security" by the UN Security Council; and the "greatest ever threat to human rights" by the UN High Commissioner for Human Rights.

BIGBURY ENVIRONMENTAL GROUPS

BIGBURY NET ZERO

Join the Bigbury Net Zero group and help to disseminate information and investigate practical steps which households and businesses can take to reduce their own carbon footprint. Subscribe on line

www.bigburynews.com/net-zero

Bigbury Net Zero invites volunteers to assist in the many events to be organised throughout the year. See website for calendar. Activities will include:

- Climate Change Festival
- Eco Energy projects and awareness
- Self sufficiency gardening
- Local produce recipe box scheme
- Car share scheme
- Clothes Swaps
- Reduce/Re-Use/Recycle workshops and promotions
- Tree planting
- Wilding verges

See website for contacts

AUNE CONSERVATION ASSOCIATION

The Aune Conservation Association (ACA) is a recognised environmental conservation charity. The charity's objectives are:-

To promote for the benefit of the public the conservation, protection and improvement of the physical and natural environment of the river Avon in the South Devon Area of Outstanding Natural Beauty"

To advance the education of the public in the conservation, protection and improvement of the physical and natural environment of the river Avon in the South Devon Area of Outstanding Natural Beauty"

Further details are available from the website

www.auneconservation.org.uk



Devon
Wildlife Trust

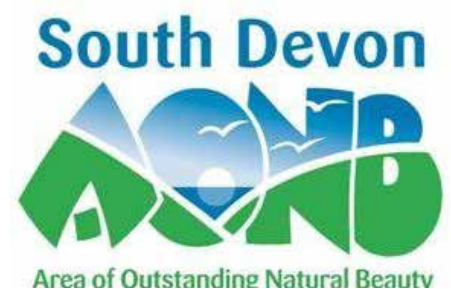
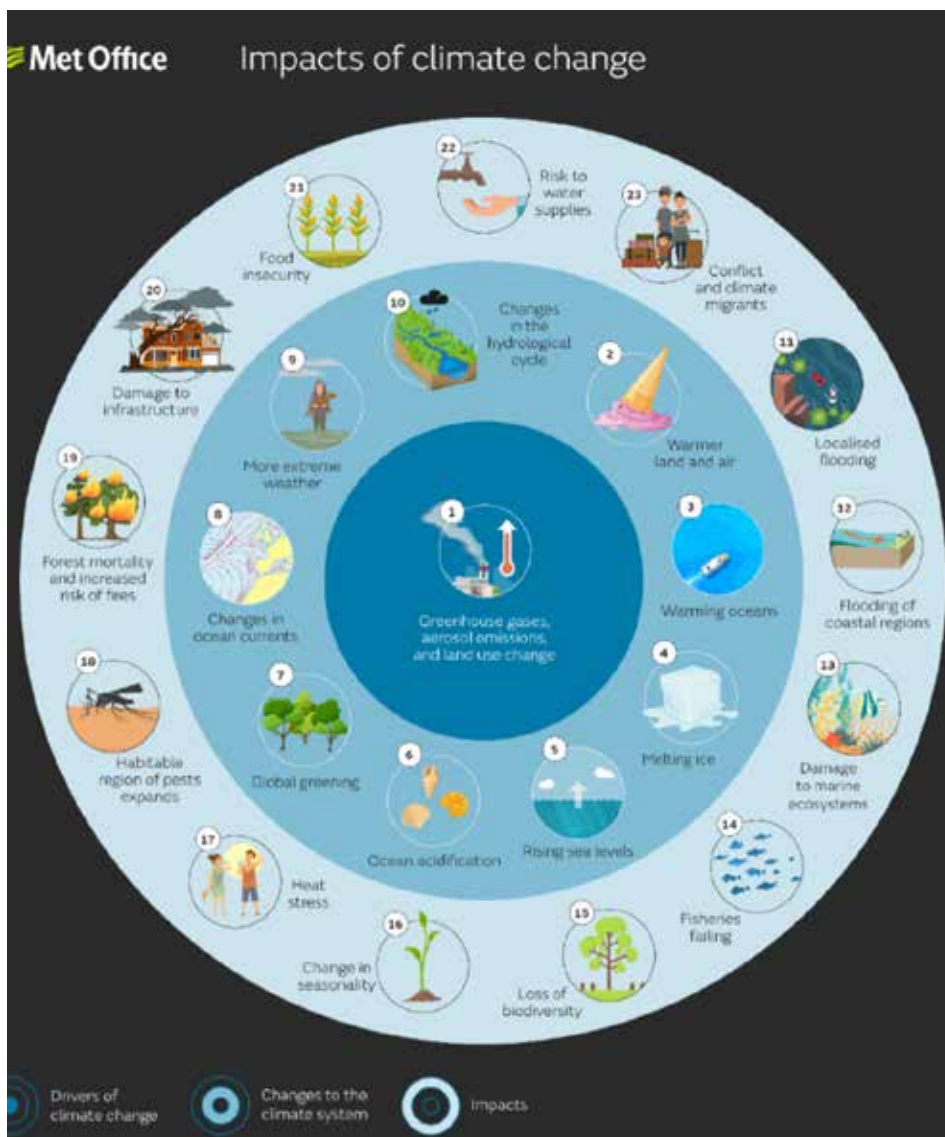
The **Avon Valley Project** is managed by the DWT and aims to restore and re-connect precious wildlife habitat, by working with landowners to plant trees and species-rich meadows. It also monitors water quality of the River Avon.

The Avon Valley supports less wildlife than it did in the past, largely because of changes in the way farmland and woodland is managed. The loss of good wildlife habitat means it is more difficult for species to move around the landscape.

Since 2011, the project has visited more than 100 landowners, influencing wildlife habitat of 1200 hectares – that's around 10% of the whole Avon Valley!

For more information contact

Lynne Kenderdine
Land Management Advisory Officer
Devon Wildlife Trust
Cricklepit Mill
Commercial Road
Exeter EX2 4AB
lkenderdine@devonwildlifetrust.org
07392 865905
Switchboard: 01392 279244



Find information on beaches, walks and sign up for alerts about events in the South Hams. Useful interactive maps.

www.southdevonaonb.org.uk

ST LAWRENCE CHURCH



ST LAWRENCE CHURCH

Bigbury

Vicar: Rev Matt Rowland

matt.rowland@modburyteam.org 01548 830260

www.modburyteam.org

THE TOWER & BELLS FUND



DISCOVER YOUR FAMILY TREE
back to 16 great, great, grandparents

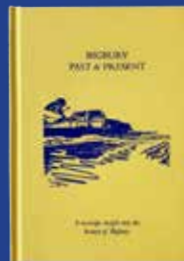
In return for a £40 donation to the Tower & Bells Fund, local researcher **Jan Davies**, will trace 4 generations of direct ancestors using her 40 years of experience and worldwide subscriptions to family history websites, societies and newspaper archives. Further research can also be commissioned at £10 per hour, with ALL fees donated to the Tower & Bells Fund. Contact Jan for full details of all the options.

jannydavis@icloud.com 07485 263423

The £40 donation* covers 3 hours of research. Additional work is provided at £10 per hour and copies of Certificates at cost. All donations to be made directly to

Title: St Lawrence Church Tower & Bells Fund;
Sort Code: 30-98-97 Account No. 87437468; OR
BIC: LOYDGB21031; OR
IBAN: GB99 LOYD 3098 9787 4374 68

New Fundraising Book 'Bigbury Past & Present' Available to order now!



A nostalgic collection of over 100 photographs from c1890 to the present day, accompanied by a descriptive narrative.

Created to raise money for the restoration of the Tower and Bells of St Lawrence Church, Bigbury. All profits on the sale donated to this cause.

A unique hand-bound book. A5 hardback format, containing 44 colour pages.


Book features Bigbury Parish including: Burgh Island, Bigbury-on-Sea, Bigbury, St Ann's Chapel & Easton.

An ideal gift for those who know Bigbury or to add to a holiday let!

Copies will be available to purchase in **Holywell Stores**, direct or by post from **Jill Gubbins - 01548 810651**, or by emailing bigburynewseditor@gmail.com

£19.95 (+ £3.90 P&P)

Book comes cellophane wrapped and includes four printed postcards!

POST LOCKDOWN EXHIBITION AT THE VENUS CAFE
BIGBURY-ON-SEA
Bigbury Parish
'UNDERGROUND MAPS'
in aid of TOWER & BELLS FUND

MADE TO ORDER. COMBINATION OF HISTORICAL MAPS AND MODERN PHOTOGRAPHS. THE VENUS CAFE, BIGBURY-ON-SEA, IS THE PERFECT PLACE TO ENJOY A CUP OF TEA WHILE VIEWING THIS EXHIBITION. THE VENUS CAFE IS A MEMBER OF THE MODBURY MISSION. ALL PROFITS FROM THE SALE OF THESE MAPS WILL BE DONATED TO THE TOWER & BELLS FUND.

The Church of St Lawrence in Bigbury is a Grade 2 * listed building dating back to the 13th Century. It is one of five nearby churches which are part of the Modbury Mission served by Rev Matt Rowland.

The bells have not been rung for over 20 years because the tower is unsafe and in dire need of restoration. For more information see the Modbury Mission website.

Local businesses (**Holywell Stores**, **Beach Shop**, **Venus Cafe** and **Fryer Tucks**) are supporting the fund raising by selling Bigbury Past & Present or (at **Venus**) by donating to the fund for every cup of tea sold at the cafe. Fryer Tucks has sponsored events at the **Driftwood Diner** and at the outdoor jazz.

Designer, **Karen Lawrence (Devon Cow)** developed the Bigbury 'Underground Maps' which were researched by **Valerie Scott** for use by volunteers during the pandemic. They can be ordered by

contacting the Bigbury News Editor. An Exhibition of these maps is in the Venus Cafe.

The **Bigbury Past & Present** book was developed by **Henry Wainwright** & **Louise Wainwright** with a treasure trove of old photographs donated by the **History Society** and individual parishioners with support from **Roger Grimley** and **Harry Bardens**.

Jan Davies is most ably researching Family Trees in exchange for a donation to the Tower & Bells Fund.

Vic and Jill Gubbins have been the leading lights when it comes to fund raising events and making applications to major donors such as the Heritage Lottery Fund.

For details on how to donate, contact Vic and Jill Gubbins 810651



BIGBURY COMMUNITY GROUPS

MEMORIAL HALL

Events are regularly held in the Memorial Hall in St Ann's Chapel. The hall can be booked for private functions. There is an outdoor playing field and playground behind the hall. Wifi, chairs and tables, toilets and kitchen. Small local car-park.

The booking diary is held at Holywell Stores in St Ann's Chapel. For hire costs, contact the Chairman.

MEMORIAL HALL CHAIRMAN

Charles Harrington

charles_harri@yahoo.co.uk 01548 810023



Charterlands Chatter

BIGBURY COFFEE MORNING

Monthly fundraising event at the Memorial Hall in St Ann's Chapel.

First Wednesday every month - 10.30 to noon.

cakes stall, coffee, bric-a-brac, books, textiles, cards raffle etc.

Chance to meet with friends and make friends.

**Yvonne Klidjian
and Jean Wright**

01548 810029

BIGBURY WATCH



To receive crime alerts emailed directly to your in-box - subscribe to **Devon & Cornwall ALERT.**

<https://alerts.dc.police.uk>

You can decide what topics you need to know about (marine crime, householder issues, fraud etc.) Contact our Bigbury Watch Team - **Eamonn and Linda Brynes.** NEW Home number 01548 811104 mobile 07790485102 eamonnandlinda@hotmail.co.uk



THE FILLING STATION

James Spencer

jamesrcspencer@aol.com

Informal, Christian gathering on the third Thursday (7.30 pm) each month at the Memorial Hall, St Ann's Chapel TQ7 4HQ

BIGBURY GARDENERS

This is a Whats App group of keen and novice gardeners, sharing the joys and challenges of gardening in the coastal environment.

We share tips and advice, ask questions about fruit, vegetable and flowers.

Re-wilding, wildflower meadows and conservation gardening as well as pest and disease control are also on the list of topics raised.

Contact Louise Wainwright for the invitation link to join the group.

You are welcome.

louise.wainwright 56@gmail.com
810991

THE FRIENDS of ST LAWRENCE

FRIENDS NEEDED!

Historical St Lawrence's Church relies on the ongoing support of the community to ensure it's here for future generations.

By joining **Friends of St Lawrence's Church (FOSL)**, you will help maintain this priceless building and its remarkable contents.

Please get in touch:
Contact FOSL Secretary,
Gill Cook, on 01548 810 156

Or Visit:
www.FOSLBigbury.co.uk



FRIENDS OF ST LAWRENCE'S CHURCH
BIGBURY

PLEASE JOIN IN

BIGBURY COMMUNITY GROUPS

CHOIRS



MODBURY GOSPEL SINGERS

Modbury Gospel Singers meets under the leadership of Jo Highley at the Modbury Recreation Ground Pavilion, most Monday evenings, 19:30 to 21:30.

A payment of £2 per session covers our running costs. We welcome anybody who wants to sing, regardless of their ability and experience. There is no need to read music.

www.modburygospelsingers.org.uk

THE KINGS MEN

The Kingsmen Close Harmony Chorus is an enthusiastic group of men from South West Devon who love singing together in four-part close-harmony Barbershop style.

Meet at Evangelical Church,
Fore Street, Kingsbridge. TQ7 1PG
Wednesdays from 7:30pm to 10pm
01548 856528

enquiries@kingsmen.org.uk
www.kingsmen.org.uk

We can often be found singing in
the Crabshell Inn after rehearsals on
Wednesdays.

STANBOROUGH CHORUS

Friendly bunch of about 50 sopranos, altos, tenors and basses, who meet together for the joy of singing and performing. There are no auditions ... that's all you need!

We just celebrated our 30th birthday and the choir just keeps expanding. Numbers have reached a record high and seem to grow each term.

Find out more on the JOIN page of
www.stanboroughchorus.com

Meet at the Kingsbridge Methodist Church every Monday at 7.30pm. Please arrive promptly. We have a short break at about 8.30pm and end at 9.30pm.



BIGBURY HISTORY SOCIETY

Talks & Visits organised throughout the year and advertised in Bigbury News and Bigbury Drums. Events posters on village notice boards.

Chairman
Charles Harrington
charles_harri@yahoo.co.uk
01548 810023



BIGBURY TREE PEOPLE

We want to promote and assist in the planting of as many trees as possible in Bigbury. We aim to do our part to combat climate change by planting more trees.

Please contact us if you would like to volunteer to help plant trees, donate funds for the purchase of trees or offer planting space for trees.

Do you have a woodland and would you like to invite people to come on an organised walk in your wood with conservation and wildlife experts?

henry.wainwright52@gmail.com
810991

Bigbury Parish Tree Warden
Trish Bagley
trishbagley@icloud.com



BIGBURY BOOKWORMS

We are a social group meeting each month in our own homes. A book is chosen, by the host, to read and discuss the following month.

This is usually quite short and followed by tea and biscuits.

Contact:

Liz Edwards 810657



BIGBURY LADIES



Anyone is welcome to join us on our monthly meetings. We are an informal group – i.e. no chairman, secretary etc. Just a group meeting on the 3rd Wednesday of each month. Please get in touch with one of us to find out more:

Pam Trundle 810791
Chris Curgenvin 810 482
Rita Baker 810479

THE BEACH & ISLAND

Burgh Island is reached by a causeway and there is a public footpath leading past the Pilchard Inn to the Huer's Hut on top of the island. All bars at the Pilchard Inn are now open to the public. Dogs are permitted on the island if kept on a lead at all times.

The causeway is covered at high tide. Access to Burgh Island can be obtained by the sea tractor, operated by Burgh Island Hotel, which runs for hotel guests. The fare is £2.00 each way for members of the public to join in the ride. You can book a table at the hotel restaurant or at The Pilchard Inn and also request the sea tractor to get there by calling Reception 01548 810514 or book by email reception@burghisland.com. In adverse

weather conditions the Sea Tractor cannot always operate. The tide comes in very quickly so keep an eye out for the rising tide. Tide tables are sold at the **Beach Shop** and **Holywell Stores**.

RIP CURRENTS

Rip currents around the island are unpredictable and can pull swimmers out to sea. Rip tides are often indicated by 'calm' patches of water between the line of breaking waves. If in trouble raise your arm to attract attention of the life guards. Float like a starfish whilst they come to fetch you. Always swim with someone else, especially when lifeguards are not present. If you see someone in trouble, dial 999 and ask for the Coastguard.

LIFE GUARDS

Lifeguards are present at:

Sedgewell Cove at Bigbury-on-Sea

Daily 01 May - 26 September

Patrol times 10am - 6pm

Sedgewell also has a first-aid room manned by the RNLI.

Bigbury -on-Sea Beach

Daily 10 July - 5 September

Patrol times 10am-6pm

Challaborough Beach

Daily 15 May – 26 September

Patrol times 10am-6pm

Swim between the flags on the beach for safety.

Dogs on Beach Restrictions

1st May - 30th September



ANNUAL SWIMMING EVENT

There are several annual fund raising events organised in the Bigbury Bay area - The Round Burgh Island Swim, The Bantham Swoosh, The Pub to Pub Swim and the Race the Tide events. Participants need to book a place as the entries are restricted to ticket holders.

CAR PARKING

SHDC Car parks see SHDC page

John Tucker's field

Further up Folly Hill, John Tucker usually opens up a field to help with the demand for parking in peak season.

NO LIFEGUARD SERVICE

DON'T LET YOUR KIDS GO IN THE WATER WITHOUT AN ADULT

HEED THE ADVICE OF PEOPLE WILLING TO HELP (LOCAL WATER USERS, VOLUNTEER PATROLS, ...)



IF YOU GET INTO TROUBLE IN THE WATER

STAY WITH YOUR KIT AS IT WILL KEEP YOU AFLOAT AND MAKE YOU MORE VISIBLE

FIGHT YOUR INSTINCT TO THRASH AROUND, EXTEND YOUR ARMS AND LEGS, GENTLY MOVE THEM AROUND TO HELP YOU FLOAT UNTIL YOU CAN CONTROL YOUR BREATHING

CALL FOR HELP BY WAVING ONE ARM
ATTACHING A WHISTLE TO YOUR WETSUIT IS A SIMPLE AND EFFECTIVE METHOD OF CALLING FOR HELP

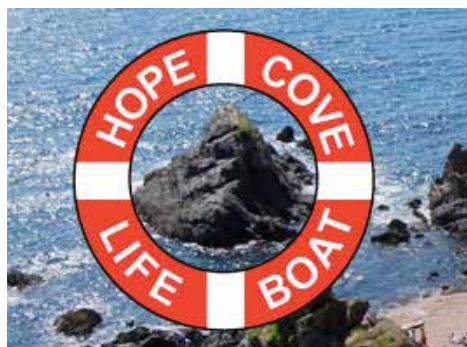
IF YOU SEE SOMEONE IN TROUBLE, CALL 999
USE PUBLIC SAFETY EQUIPMENT IF AVAILABLE - DON'T PUT YOURSELF AT RISK -

COMMUNITY LIFESAVING SOUTH HAMS
"Together we do not want anyone to drown on our patch"

During out of season periods, when there is no Lifeguard service, -be careful when there are offshore winds and keep clear of rip currents.

Rip currents are sometimes indicated by stretches of water without waves when other parts of the shore have waves.

LOCAL CHARITIES



www.hopcovelifeboat.org

**Protects and save lives in
Bigbury Bay and the
surrounding coastline**

**VOLUNTEERS &
FUND RAISERS
NEEDED**



www.stlukes-hospice.org.uk

**Specialist advice and
support for people with
progressive life-limiting illnesses
in Plymouth, South West Devon &
East Cornwall**

**VOLUNTEER
'COMPASSIONATE
FRIENDS' &
FUND RAISERS
NEEDED**

VOLUNTEERS NEEDED

**KINGSTON
FIRE STATION**



Proudly run by local volunteers since 1949

JOIN US

Call us now
Paul 810953
Michael 810735



Could you spare a few hours for the **Modbury Caring Befriending Service**? Or - perhaps you feel that you, yourself would benefit from a few hours a week from a Befriender? The giving and receiving of the gift of friendship is the fabric of a strong Community.

Find out more from the Befriending Coordinator, **Sheila Harrison**.

07554 997140 or

modburycaring@gmail.com.

You can drop in to see her on Wednesdays from 11.00 – 12 noon at the Modbury Parish Office by the Co-op in Galpin Street, Modbury.

COUNTRY HILL ANIMAL SHELTER

Reg. No 1114853

01548 288001

countryhillanimalshelter.co.uk

HOUSE CLEARANCE & FURNITURE REMOVALS

We collect furniture donated to our charity for re-sale. We need volunteers for our shops and warehouse. Donations of cat food welcome in Tesco and Morrison stores in Kingsbridge
THANK YOU



www.stlukes-hospice.org.uk

**Specialist advice and
support to people with
progressive life-limiting
illnesses in Plymouth, South
West Devon & East Cornwall**

**VOLUNTEERS &
FUND RAISERS
NEEDED**

SOUTH HAMS HOSPITAL LEAGUE of FRIENDS



www.shhlof.co.uk





BIGBURY 2021 BUSINESS DIRECTORY



ACCOUNTANCY & TAXATION

GHW ROSEVEAR & CO

Modbury PL21 0QR

01548-831427

george@holbrookass.com

ARCHITECTS

AYRES HAYNES ARCHITECTS

Plymouth PL9 9SJ

01752 408051

admin@ayreshaynes.com

M. BISSEX ARCHITECT. DRAWINGS

07843 286857 / 01761 436861

www.mbad.co.uk

GED KING PLANS

info@gedkingplans.co.uk

07805 589240

PRIME DESIGN

St Ann's Chapel 810005 / 07710 657387

P R I M E



D E S I G N

Commercial, Retail & Residential

ARCHITECTURAL DESIGN
& INTERIOR DESIGN

Plans & Elevations Drawn

Planning Applications

Building Regulations

Check Building Surveys

Free Advice

Contact: Simon Bronstein

Tel: 01548 810005

Mbl: 07710 657387

2, Pickwick Cottage, St Anns Chapel

Ged
King
Plans

Ged King Plans Ltd

Architectural Design & Building Consultant

For peace of mind with your building project

07805-589240 / 01752-408792

info@gedkingplans.co.uk

Planning and Building Regulation drawings

new dwellings • barn conversions • home extensions

• loft conversions • commercial designs



**AYRES HAYNES
ARCHITECTS**

Planning advice

&

Full Architectural services

Tel. 01752 408051

Email. admin@ayreshaynes.com

Web. www.ayreshaynes.com

To advertise in Bigbury News
bigburynewseditor@gmail.com
see website for rates
www.bigburynews.com

MATTHEW BISSEX ARCHITECTURAL DRAWINGS
PLANNING AND BUILDING REGULATIONS APPLICATIONS



PLANS DRAWN FOR ALL EXTENSIONS
LOFT CONVERSIONS, CONSERVATORIES,
NEW BUILD HOUSING.

Visit my website at www.mbad.co.uk

For a free quote on plans for your build project contact

Matthew on 01761 436861 or mobile 07843 286857

Unwind Hair Salon
Ladies & Gents Stylist
Krista Pickering
01548 810000
07808645981

Bigbury Village
TQ7 4AP
unwindhairbigbury@gmail.com
www.unwindinbigbury.co.uk



Unwind
Beauty ~ Massage ~ Skin Care

Bigbury Village
Kingsbridge
South Devon
Tq7 4ap

Louise Pitt
07786860440
unwindinbigbury@mail.com
www.unwindinbigbury.co.uk



ARTISTS & AUTHORS

JOHN SIMES Collingwood Publishing
810693 / 07941 654923 me@johnsimes.co.uk

MARY McCLAREY
www.marymcclareyauthor.co.uk

BEAUTY

AQUA HAIR DESIGN
Modbury 01548 831260

JULIE MOBILE HAIR 01548 810634

THE SALON
Kingsbridge 43 Fore St 01548 852128

UNWIND
Shop: TQ74AP 01548 810000
Louise Pitt beauty/massage/skin care 07786 860440
Krista Pickering hair 07808 645981

BIKE WORKSHOP

BIGBURY BIKE SHACK 07378 340231
todd@shack.bike www.bird.bike

CHURCH

Rev Matt Rowland - St Lawrence Church
matt.rowland@modburyteam.org
www.modburyteam.org 01548 830260

CHURCH WARDEN
Bryam Carson 01548 810606

TOWER & BELL FUND
Vic & Jill Gubbins 01548 810651

FRIENDS of ST LAWRENCE
Peter Cook 01548 810156

THE FILLING STATION
James Spencer jamesrcspencer@aol.com

CLEANING

FIBRE FRESH (carpet cleaning)
fibre-fresh.co.uk 01548 550906

FINE SHINE CLEANING
01548 854313 info@fine-shine.com

REST ASSURED LAUNDRY
077222 294060 01548 831488

WHK SERVICES
whkservices.com 01803 839683

THE SALON
Hairdressing for men
and women
Manicure & Pedicure
43 Fore Street
Kingsbridge
Tel: 01548 852128

Julie
Fully Qualified
Mobile Hair-stylist
Ladies & Gents
Competitive Prices
Answer phone Service
01548 810634



Fibre Fresh
CARPET CLEANING
Carpets
Upholstery
Rugs
Stains & Odours
Removed
End of Tenancy
Low-Cost &
Quick Drying
Local Professional Company
www.Fibre-Fresh.co.uk
01548 550906
NCCA® Member



Aqua Hair Design

New!

Men and boys barbering

**Ladies – cutting, styling,
perming, colouring, finishing**

Call Kim and Anne to book your
appointment on:

01548 831260

**7 Modbury Court,
Church Street, Modbury**

*We look forward to seeing clients
both existing and new*

FINE SHINE
CLEANING

- ❖ Carpet & Upholstery Cleaning
 - ❖ All Hard Floor Cleaning
 - ❖ Domestic & Commercial Cleaning
 - ❖ Window Cleaning & Gutter Vacuuming
 - ❖ Ground & High Level Pressure Washing
 - ❖ Valeting
 - ❖ Holiday Home Changeover & Caretaking Packages
- Tel: 01548 854313**
Email: info@fine-shine.com

COMPUTERS

TGO - Phil Shea Bigbury
phil@tgoweb.co.uk 01548 810628

ELECTRICS

CHAPMAN ELECTRICAL

01752 896183 / 07971 855852

enquiries@chapmanelectrical.biz

F.W. JARVIS & SONS

01548 810438

SOUTH HAMS ELECTRICAL SUPPLIES

TQ7 4EL 01548 559001 / 07773 325316

colinjarvis.cj12@outlook.com

SOUTH HAMS ELECTRICAL SUPPLIES

• SATELLITE & TV SERVICES

- Freeview Digital TV • Freesat HD
- Aerial Installations • Data/Telephone
- Aerial Repairs

Tel: (01548) 559001

Mobile: 07773 325316

Springfield, Loddiswell, Nr Kingsbridge. TQ7 4EL

Email: colinjarvis.cj12@outlook.com

CHAPMAN
electrical



**Domestic & Commercial
Electrical Contractors**
Over 20 years serving Bigbury
and the surrounding area
Fully NICEIC approved contractor

Tel: (01752) 896183

Mob: 07971 855852

Or email:

enquiries@chapmanelectrical.biz



F. W. Jarvis & Sons Electrical Contractors

Est. 1964

- New Installations & Rewires
- Inspection & Testing
- Electrical Heating Systems
- Lighting

All Work Guaranteed

REGISTERED MEMBER



Call Michael or Brian
Tel. 01548 810438

"They carried out a number of viewings in short succession which resulted in a swift sale."

"Thank you for going the extra mile!"

"A great service all round, honest and realistic advice on valuation, regular feedback on viewings and progress updates through to completion – exactly what you want when selling!"

"A belated thank you to you for all your help and support in finding us our new home."

"We just wanted to take the opportunity to say a big thank you to you all for all your hard work in selling our house. We really appreciated your friendliness, patience and that you work so well together as a team."

01548 830831



Sailing ahead.

For customers who expect more from their estate agent.



SOUTH HAMS'
LEADING
ESTATE AGENT

Marchand Petit
ESTATE AGENTS

marchandpetit.co.uk

ESTATE AGENTS

LUSCOMBE MAYE

01548 830831

modbury@luscombemaye.com

MARCHAND PETIT Modbury

www.marchandpetit.co.uk

01548 831163

DARTMOUTH	KINGSBRIDGE	MODBURY	NEWTON FERRERS	SALCOMBE	TOTNES	LETTINGS	PRIME WATERFRONT & COUNTRY HOUSE
01803 839190	01548 857588	01548 831163	01752 873311	01548 844473	01803 847979	01548 855599	01548 855590

FITNESS & SPORT

BIGBURY GOLF CLUB

Bigbury TQ7 4BB 01548 810557
bigburygolfclub.co.uk

DISCOVERY SURF

B-on-S / Challaborough 07813 639622 / 810557
martin@discoverysurf.com

FIT 2 GO - pilates/aerobics/strong & steady
Jill Gubbins 01548 810651

FUEL & HEATING

BIGBURY HEATING & PLUMBING

01548 810313 / 07737 328495

CHAPMAN CONTRACTORS (logs)

01548 810016 / 07718 722680

WEST COUNTRY STOVES

Aveton Gifford TQ7 4NT 01548 550400
westcountrystoves.co.uk

GRAPHIC DESIGN

DEVON COW South Hams

devoncowone@gmail.com 07856 550 239

JEN DESIGN South Hams

jendesign71@gmail.com 07760 557665

HOTELS & HOSTELS

BURGH ISLAND HOTEL

reception@burghisland.com 01548 810514

BIGBURY CAMPING BARN

info@bigburyholidays.co.uk 01548 810079



Get yourself

'FIT TO GO'

with JILL'S
local classes

held at
BIGBURY and
MODBURY

Aerobics, Pilates, Aqua and Fitness for
Seniors, open to locals and visitors.

Experienced qualified instructor. For
info, call JILL on 01548 810651 or
email jill.gubbins@homecall.co.uk -
will reply in 24 hrs if classes running.



New Flexible
Membership of
Bigbury Golf Club
for infrequent golfers
£350 per year



Play up to 30 rounds of golf
Up to 3 guests per round
Play all PlayMoreGolf courses in the UK
Online booking through PlayMoreGolf
Advanced 7-day booking
Hold an official handicap*
*after payment of affiliation fee
Play in selected competitions
Members social event calendar

01548 810 557
enquiries@bigburygolfclub.co.uk

DISCOVERY SURF SCHOOL
Bigbury on-Sea & Challaborough Bay

Lessons

- Beginner & Advanced
- Discounted Private Family
- Taster Session 1 Hour
- Supervised Practice
- Special Needs
- Surf Club
- Stand Up Paddle
- Surf Camp
- All equipment is provided

Hire

- Surfboards & Wetsuits
- Stand Up Paddle Boards
- Single & Double Kayaks
- And Beach Shop Sales

★ Guaranteed ★
We'll get you standing up and riding in your first lesson.

07813 639 622 • www.discoverysurf.com • martin@discoverysurf.com

Bigbury Heating & Plumbing

01548 810313
07737 328495

24 hour callout
Oil - LPG - Gas

Earn up to £11,200
for converting to
renewable heat
energy.

ARTIZAN

can replace your existing system
with air source heat pump,
renewable energy technology.



ecodan
renewable heating technology

MITSUBISHI ELECTRIC
Business Solutions Partner

Ecozon Ambassador George Danks



Reduce your
carbon footprint



Earn money back from
government grants



Reduce your
monthly bills

Claim your **no obligation** consultation today!

01803 308008 office@artizanlifestyle.com

CHAPMAN CONTRACTORS LTD SEASONED LOGS

sold by dumpy bag, netted or bulk deliveries

**NETTED KINDLING AVAILABLE
HOUSE COAL AND SMOKELESS NUGGETS**

• TREE AND HEDGE CARE • LAWN MOWING
• FENCING AND GARDEN WORK
• FULLY INSURED • 17 YEARS EXPERIENCE

TIMBER PROCESSOR, CHIPPER AND
KINDLING MACHINE FOR HIRE ON OR OFF SITE

CONTACT NEIL CHAPMAN
01548 810016/07718 722680





devoncow
graphic design

A friendly, fast, efficient, one-on-one design service.

Helping you to get the best from your business or project.

- Adverts • Artwork • Banners • Branding
- Business Cards / Stationery
- Digital Art • Flyers • Invitations • Labels
- Leaflets • Logo Design • Menus • Posters • Signs
- T-Shirts • Wedding Stationery and more!

Find out what the moo can do for you!

Please take a mooch at devoncow's facebook page. Regularly updated with the latest projects and creative ideas.

07856 550 239
devoncowone@gmail.com
devoncow graphic design



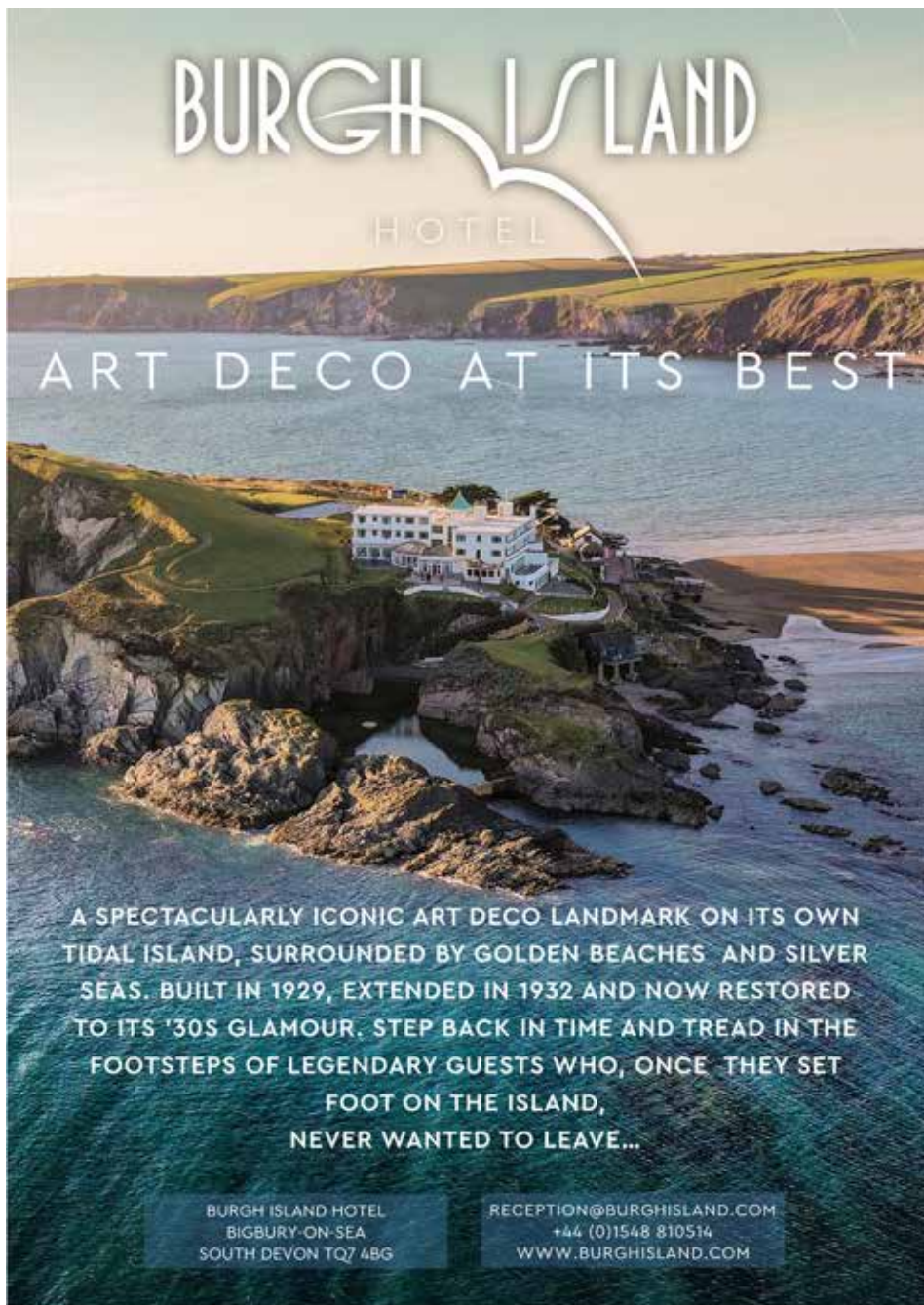
JEN DESIGN

Email: jendesign71@gmail.com
Tel: 07760 557665

Graphic design to suit your every need ...

- Artwork & Promo Leaflets
- Logo Design & Branding
- Posters & Brochures
- Business Stationery
- Motion Graphics
- Typesetting
- Transcription
- Administration

... Get your message seen with Jen Design!



BURGH ISLAND

HOTEL

ART DECO AT ITS BEST

A SPECTACULARLY ICONIC ART DECO LANDMARK ON ITS OWN TIDAL ISLAND, SURROUNDED BY GOLDEN BEACHES AND SILVER SEAS. BUILT IN 1929, EXTENDED IN 1932 AND NOW RESTORED TO ITS '30S GLAMOUR. STEP BACK IN TIME AND TREAD IN THE FOOTSTEPS OF LEGENDARY GUESTS WHO, ONCE THEY SET FOOT ON THE ISLAND, NEVER WANTED TO LEAVE...

BURGH ISLAND HOTEL
BIGBURY-ON-SEA
SOUTH DEVON TQ7 4BG

RECEPTION@BURGHISLAND.COM
+44 (0)1548 810514
WWW.BURGHISLAND.COM

West Country Stoves


Contemporary & Traditional
Wood, Multi Fuel, Pellet & Gas Stoves



- Advice
- Free Site Visits
- Installation
- Annual Servicing
- Chimney Sweeping
- Kiln Dried Logs

t: 01548 550400
e: sales@westcountrystoves.co.uk
www.westcountrystoves.co.uk

BIGBURY CAMPING BARN



Group accommodation with flexible indoor space, on the Cresta Run, TQ7 4AP.

Contact Cathy
01548 810079
info@bigburyholidays.co.uk
www.bigburyholidays.co.uk

Avon Mill

Garden Centre • Café • B&B
Art & Crafts • Boutique • Florist



Woodland walks • Dogs welcome
Independent shops • Plenty of parking
Breakfasts, lunches & 'Devon Cream Teas'

Loddiswell • Kingsbridge • Devon • TQ7 4DD
www.avonmill.com 01548 550338

GARDENING

AVON MILL
Loddiswell TQ7 4DD 01548 550338
www.avonmill.com

TPC GARDENING SERVICES
07581 303226

RINGMORE GARDENING SERVICES
07810 641800
Camhar1234@icloud.com

HEALTH

MODBURY HEALTH CENTRE
modburyhealthcentre.co.uk 01548 830666

KINGSBRIDGE EYE CARE GROUP
kingsbridgeeyecare.co.uk 01548 856854

SOUTH DEVON FOOT CLINIC
07827 816 203
southdevonfootclinic@gmail.com
www.southdevonfootclinic.co.uk

BIGBURY COVID SUPPORT GROUP

For assistance during self-isolation due to having Covid symptoms contact the CSG for help in shopping for essential food and prescriptions.

Coordinator: Stuart Watts
01548 810373
07711 806439

KINGSBRIDGE EYE CARE GROUP

Clinical Excellence

Full Eye Health Examinations
Contact Lens Specialists
Retinal Photography & Macula
Pigment Density Scan
Glaucoma Examinations
OCT Eye Scanning Examination
Free Hearing Assessments

Luxury Designer Brands

Call us today to book your appointment.

Nigel Frost Optometrist
3, Chene Court
Modbury
01548 830944

Kingsbridge Eye Care
No.1 The Promenade
Kingsbridge
01548 856854

www.kingsbridgeeyecare.co.uk



South Devon Foot Clinic

Podiatry & Chiropody Services

Services offered within your own home.
Covering Ivybridge and surrounding areas.



Services offered
Corns & callus removal
Nail care incl. management of ingrowing
toe nails & fungal nail infection
Diabetic Foot Care
Verruca Treatment
Plantar Fasciitis Management
Musculoskeletal & Biomechanical
Assessments
Orthotic Prescription
Reflexology

Get in touch
southdevonfootclinic.co.uk | 07827 816 203 | southdevonfootclinic@gmail.com

The COLLEGE of PODIATRY

For the latest coronavirus advice in Devon:
devon.cc/covid-19

STAY ALERT | CONTROL THE VIRUS | SAVE LIVES

MINOR INJURIES UNIT

South Hams Hospital (Kingsbridge)
Plymouth Road
Kingsbridge
Devon
TQ7 1AT

Tel: (01548) 852349

Opening times: 09:00 - 17:00

Opening days: 7 days per week

X-ray available: 09:00 - 17:00 (Mon-Fri)

The Minor Injury Unit at the South Hams Hospital (Kingsbridge) is open every day (09:00 - 17:00) to treat you if you have an injury which isn't life-threatening, but still requires urgent treatment.

Our team of nurse practitioners have undertaken specialist training and are able to assess, diagnose and treat patients of all ages (we also have x-ray facilities on weekdays 09:00 - 17:00).

Examples of the problems we can see you for: **Cuts** - we can use glue, steristrips (paper stitches) or sutures to close wounds; **Small burns** or scalds; **Bites and stings**; **Sprains** and **certain fractures** (upper and lower limbs); **Minor head injuries**; **Infected wounds**; **Foreign bodies in eyes**.

You don't need to pre-book an appointment, just drop-in to the unit between 09:00 and 17:00. On-site parking is free, but is limited.

If you are unsure whether the MIU is the right place for your treatment, please dial **01752 434390** for advice on which service is most appropriate for your specific needs.

DERRIFORD HOSPITAL

www.plymouthhospitals.nhs.uk

MODBURY HEALTH CENTRE



Modbury Health Centre
Poundwell Meadow
Modbury PL21 0QL
01548 830666
www.modburyhealthcentre.co.uk

DEFIBRILLATORS



Outside Holywell Stores, St Ann's Chapel TQ7 4HQ



Outside Unwind Hair & Beauty Bigbury TQ7 4AP



Inside bus shelter, Marine Drive, Bigbury-on-Sea TQ7 4AS

NHS

It's not a 999 emergency,
but you need medical help fast.



For more information visit www.nhs.uk/111

HOME DELIVERIES

CHALLONS COMBE

Organic Meat Boxes 07784 427790
andrewfish10@hotmail.co.uk

HOLYWELL STORES St Ann's Chapel
TQ7 4HQ 01548 810308
Welcome packs/papers/ milk
holywellstores@msn.com

PRIDEAUX FARM

Organic Beef Boxes 01752 872815
j.sherrell@btinternet.com

To advertise here
contact the Editor

bigburynewseditor@gmail.com

LEGAL

GHW ROSEVEAR & CO

Modbury PL21 0QR 01548-831427

george@holbrookass.com

PERSONALISED SOCIAL CARE SOLUTIONS

07594 560011

www.personalisedsocialcare.co.uk



GEORGE H.W. ROSEVEAR
& COMPANY

A DIVISION OF HOLBROOK ASSOCIATES

ACCOUNTANCY, TAXATION AND
COMPANY SECRETARIAL SERVICES

01548 831427

3 MODBURY COURT, 32 CHURCH ST.,
MODBURY, DEVON, PL21 0QR
george@holbrookass.com

GREAT PRIDEAUX FARM

Local Organic Beef Boxes



Delivered to your door

Tel: 01752 872 815 / 07973 427 602

j.sherrell@btinternet.com

Great Prideaux Farm, Membland, Newton Ferrers, PL8 1HP

Challons Combe

FRESH MEAT AVAILABLE

Beef | Pork | Lamb | Veal

FREE LOCAL DELIVERY ON LARGE ORDERS
- SO FILL YOUR FREEZER NOW!
CUT AND PACKAGED TO YOUR REQUIREMENTS

Call Andrew on 07784 427 790 or
email: andrewfish10@hotmail.co.uk
with your orders, queries or for a price list.



MUSIC

KINGSBRIDGE JAZZ

www.kingsbridgejazzclub.com

MARTIN HOWELL

DJ, live bands mh@martinhowell.co.uk

SPRINGBANK MUSIC (lessons)

jo@springbankmusic.co.uk

A-G ACOUSTIC

Music for all occasions

Public address system hire

All types of music (recorded)
Rock/Classics/Mood/Dance

Three piece Guitar based
easy listening band
includes Female singer

Ukulele band (10 piece)

All types of functions quoted
from House parties to Hotels

Contact Martin: 07768 547522
or Peta: 01548 550996

E-mail: mh@martinhowell.co.uk

PAINTERS & DECORATORS

BIGBURY PAINTERS & DECORATORS

01548 831686 / 07591 656366
bigburypropertyservices@gmail.com

BIGBURY PAINTERS and DECORATORS

Provides a residential and commercial service from house painting to commercial decorating. Interior or exterior. Trustworthy, local and reliable service. Reasonable rates.

Contact - ROY or ALVIN
07591 656366 / 01548 831686
Email -
royparnell@hotmail.co.uk



painting and decorating

PLUMBING & HEATING

A.N.D (Plumbing & Heating)

07776 181586 / 07809555922

JOHN BUTLER SERVICES

Stonework, plumbing, maintenance
01548 810462 / 07977 962091

MARTIN LEY

Modbury 07811 934551 / 01548 830609

MARTIN LEY

PLUMBING & HEATING

GENERAL REPAIRS & NEW INSTALLATIONS



Modbury
Tel: 01548 830609
Mobile 07811 934551

Challon's Combe Farm



Local, organic, pasture-fed,
yoghurt, milk & cream
in glass (and plastic)

from Holywell Stores
and other local shops,
or delivered to your door.

01548 550044

challonscombeorganics@gmail.com

A.N.D
Plumbing • Heating

**Plumbing & Heating Service
& Repair Boiler Replacement**

Long experience of installing and servicing
all makes of boilers - former Worcester engineer

Covering Kingsbridge, Salcombe & surrounding area

Tony 07776 181586 • Simon 07809 555922
email: and.plumbing@hotmail.com

Offer Number CS324 Gas Safe Number 569656

We are based in the South Hams

Gas Safe Registered

J B S

John Butler Stonework

Quality Stonework

Building & General Maintenance

Free Estimates

Efficient Service

Based in the South Hams

John Butler Services

Plumbing Maintenance and Repairs

Boiler Services and Repairs

Gas, LPG and Oil

Caravans & Holiday Home Safety Checks

Gas Safe Registered

Emergency Call Outs

Tel: 01548 810462
or 07977 962091



25 Burgh Island Causeway: 35 bookings for 2019

Join the South Devon holiday letting experts

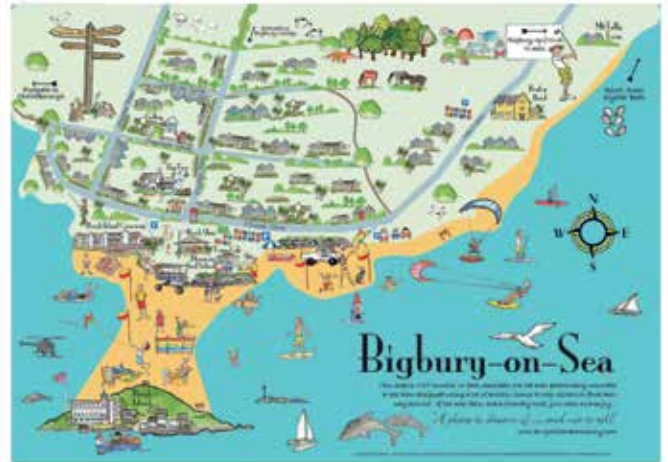
Following our strongest year of bookings on record, we are looking for new holiday home owners to work with us. Contact us today to find out about the outstanding level of year-round bookings, bespoke property management service options, and award-winning local support we could offer you.

Find out more | 01548 802179
Order a free Owners Guide | coastandcountry.co.uk
Meet our team | Visit us in Salcombe or Dartmouth

BIGBURY ON SEA HOLIDAYS

Bigburyonsea.co.uk

The site for great holidays in a great community;
now gives the accommodation, holiday activities,
many useful links and maps.



Now features community events and dates.

Send any ideas for the site to

John@BigburyOnSeaHolidays.com

A golden cove to call your own...

with holiday home ownership at
Challaborough Bay Holiday Park

A few of our
favourite things about
Challaborough Bay
Holiday Park...

- Set in the lush and beautiful South Devon, these are the most idyllic seaside getaways
- Dogs are welcome year-round and we have a walking meadow just for them
- A golden, gently shelving beach is moments from your door

holiday homes from
£18,995*

TQ7 4HU

Pop our postcode
into your Sat Nav

Take the first step on your ownership journey...

Give us a call on 01548 800 475

On visit us online at parkdeanresorts.co.uk/own-cha

*Prices vary between models and Parkdean Resorts parks. Subject to availability. All prices include VAT. Images are for illustration purposes.



Thinking of letting your holiday home?



Speak to your local holiday letting specialist

Looking for more from your holiday cottage agency? Then speak to award-winning Toad Hall Cottages. Our experienced team of property managers have the knowledge to ensure that your investment fulfils its potential throughout the year. Call us now for free and honest advice.



Call us on: 01548 202020 | www.toadhallcottages.co.uk



Home Buddies

Premier Second Home Care

Thinking of letting your holiday home?

Free consultation service and letting advice

- Full changeovers • Laundry
- Property management and key holding • Maintenance and gardening
- Bespoke and flexible approach • Advice on which agents to use

**Are you 100% happy with your
changeover/cleaning team?**

We are a small family business with many clients in Bigbury On Sea and surrounding areas. We are based in Ringmore... minutes away from Bigbury!

*Please call Lesley for a friendly chat...
mobile: 07836 329188 or email: harwood247@hotmail.com*

PROPERTY RENTAL

BIGBURY on SEA HOLIDAYS

www.bigburyonsea.co.uk

COAST & COUNTRY COTTAGES

01548 802179

coastandcountry.co.uk

PARKDEAN RESORTS

Challaborough Bay Holiday Park

01548 800475

TOADHALL COTTAGES

www.toadhallcottages.co.uk

01548 202020

PROPERTY SERVICES

BIGBURY on SEA

PROPERTY SERVICES

01548 811137

bigburypropertyservices@gmail.com

HOME BUDDIES

07836 329188

harwood247@hotmail.com

LET IT OUT

info@let-it-out.co.uk

07388 673228

PEBBLES

01548 843680

www.pebblesofsalcombe.co.uk

BIGBURY ON SEA PROPERTY SERVICES

Tel: 01548 811137

Email: bigburypropertyservices@gmail.com

Local Trustworthy couple offering a first class

Management / Maintenance Service.

Services Offered:

Changeovers and laundry - Key Holding / Property checks

Deep Clean - Window Cleaning - Garden Services

We also offer:

Complete property maintenance from decorating to a new bathroom.

PEBBLES

Est. Salcombe 2004

We take care of your home



For holiday homes, private second
homes and estates in Bigbury on Sea

Property management services

01548 843 680
pebblesofsalcombe.co.uk



REST ASSURED PROPERTIES

07722 294060/01752 830409

www.restassuredproperties.co.uk

Rest Assured Properties

Do you have a holiday home in Bigbury?

Rest Assured Properties are looking for more rental
properties to satisfy the high demand. We promise a
low commission rate so you can sit back and earn a
great income.

Call Patsy on **01752 830409** or **07722294060** or email
restassured@hotmail.co.uk


Flexible, Friendly & Affordable

www.restassuredproperties.co.uk



LET IT OUT

www.let-it-out.co.uk

 **airbnb co-hosting ~**
*The flexible approach
to letting your holiday home*

Email

info@let-it-out.co.uk

Gail Critchlow Liz Baker-James
07889 628514 07388 673228

PUBS & EATING PLACES

BURGH ISLAND HOTEL www.burghisland.com	01548 810514
CALI INN California Cross PL21 OSG thecaliforniainn.co.uk	01548 821449
FRYER TUCK'S Challaborough Bay	01548 810425
JOURNEYS END Ringmore TQ7 4HL thejourneysendinn.co.uk	01548 810205
OYSTER SHACK St Ann's Chapel TQ7 4BE oystershack.co.uk	01548 810876
PICKWICK INN St Ann's Chapel TQ7 4HQ thepickwick.co.uk	01548 810310
PILCHARD INN www.burghisland.com	01548 810514



THE OYSTER SHACK
WHAT SEAFOOD PLACE BIGBURY
ESTABLISHED 1989

***** **LOCALS OFFER** *****

This winter, use the secret code
"Bigfishlittlefish"
when you arrive at The Shack to
get our special offers menu
Big Plates - Small Prices

Book online at www.oystershack.co.uk
Or telephone 01548 810876
Milburn Orchard Farm, Stakes Hill, Bigbury, TQ7 4BE

DRIFTWOOD DINER

Challaborough Beach

Intimate, sea view,
licensed diner overlooking
Challaborough Beach.
Informal, friendly atmosphere.

See menus

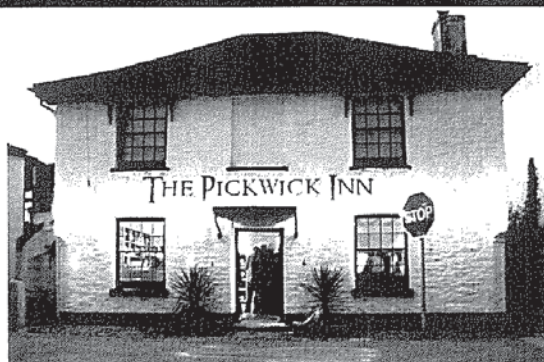
www.fryertuckschallaborough.com

BOOK A TABLE
01548 810425

THE PICKWICK INN

WWW.PICKWICK-INN.CO.UK

01548 810310



Fryer Tuck's Take Away

CHALLABOROUGH BAY
Tel: 01548 810425

Award-winning
FISH & CHIPS
Pasties - Pizzas - Pies

Sakombe Dairy Ice Cream

Beach Goods - Wet Suits
Boards for Hire

HOURS OF OPENING 1st April - end Oct
Daily midday to 10pm



Est. 1958
VENUS
(Lower Car Park, Bigbury On Sea)

**TAKEAWAY &
ALFRESCO DINING**
SURFING, KAYAKING & SUP

Enjoy our new indoor seating
opening early summer -
available for parties and
private hire.

See our website www.lovingthebeach.co.uk
for opening times and full menus.

Café: 01548 810141
Watersports: 01548 810535

loving the beach

The California Inn

Award winning A La Carte Menu and Bar Menu
Function/Meeting Room
Free WIFI Dog Friendly



Happy Monday

Pie & Pint £10

Ruby Tuesday

Curry & Pint £10

Jockey's Wednesday

Fish & Chip & Prosecco £10

Jo's Thursday

Steak £12.95

Food Daily

12-2pm & 6-9pm

Sunday Lunch

12-2:30



TEL: 01548 821449

California Inn
California Cross
Ivybridge
PL21 0SG
thecaliinn@yahoo.com



www.thecaliforniainn.co.uk

UPHOLSTERY

CUSTOM INTERIORS & COVERS

PL21 9DU 07749 454039 / 01752 893139

The Journeys End Inn

A warm welcome awaits you in our traditional 13th century pub
Award winning food and ales, large beer garden.
Tues-Friday 12.00-3.00 & 6.00-11.00

Saturday & Sunday open all day

Food available from 12.00-2.00 and 6.00-8.30
(No food Sunday evenings)

(01548)810205 The Journeys End, Ringmore, TQ7 4HL



PILCHARD INN

— BURGH ISLAND —

1756



Pilchard Inn Pub

Open daily 11am - 11pm

Traditional food served daily

Seasonal serving times apply

Pets welcome

Pre-booking available

Curry Night

Every Friday night in the pub

6.30pm onwards

Welcome drink & buffet

£24.50 per person

Pre-booking required

Pilchard Café

Open seasonally

Takeaway available

Seated café menu

Ice cream hut

Tea, coffee & soft drinks

WHAT IF THE TIDE IS IN?

Don't worry, hop on board the iconic Sea Tractor. The fare is £2 per person, each way. Regular daily crossings, weather permitting. Call 01548 810514 for on the day travel guidance.

THE PILCHARD INN
BIGBURY-ON-SEA
SOUTH DEVON TQ7 4BG

RECEPTION@BURGHISLAND.COM
+44 (0)1548 810514
WWW.BURGHISLAND.COM



**Custom Interiors
and Covers**

**Boat Interiors
Cockpit Cushions & Covers
Antique Furniture
Three Piece Suites
Auto Upholstery**

Steve Newton

Unit 6, Erme Bridge
Ivybridge, Devon PL21 9DU

☎ 01752 893139
☎ 07749 454039
✉ info@custom-interiors-covers.co.uk



www.custom-interiors-covers.co.uk

SHOPS

HOLYWELL STORES St Ann's Chapel
TQ7 4HQ 01548 810308
holywellstores@outlook.com
www.holywellstores.com

THE BEACH SHOP Bigbury-on-Sea
TQ7 4HQ 01548 810778
bigburybeachshop@gmail.com
www.bigburybeachshop.co.uk

NKUKU lifestyle shop
01548 810778
bigburybeachshop@gmail.com
www.bigburybeachshop.co.uk

STORAGE

BIGBURY SELF STORAGE
St Ann's Chapel TQ7 4HQ
07515 994542 / 07970 526048



NEED LOCAL STORAGE?

07515 994542 / 07970 526048

- » Grade A Storage Containers
- » Anti-condensate lining
- » Easy Access
- » Customer Parking
- » Secure
- » Owners On-site

HIGHER EASTON FARM
Stuart & Hazel Marshall TQ7 4HQ
bigburyselfstorage@gmail.com



HOLYWELL STORES



Premier Your one-stop shop
Amazing Value Locally

**MONTHLY SPECIAL OFFERS ON
CAR PARK NOTICE BOARDS**

**ORDER YOUR
HOLIDAY HOME WELCOME PACKS**

**WIDE RANGE OF
LOCALLY SOURCED PRODUCE**

**KINGSBRIDGE FOOD BANK
SPECIAL DONATION PACKS**

Holywell Stores & Post Office, St. Ann's Chapel, Bigbury

Shop Open

Mon - Sat 7am - 7pm and Sun 8am - 5 pm

Free Car Parking behind the shop

Tel: 01548 810308



Post Collected: Mon-Fri 3.45 pm & Sat 11.45

Post Office Open: Mon-Sat 9am-6pm

Email: holywellstores@outlook.com

www.holywellstores.com

LASTING POWER OF ATTORNEY

are you prepared?

Lasting Powers of Attorney enable you to nominate someone NOW who you trust to make important decisions on your behalf if and when you can not in the future.

For peace of mind, our qualified Social Workers help you record your choices about your Property, Finances, Health & Care as well as help you set up a Living Will for others to follow if you lose mental capacity.

We simplify the application, witness, signatory and registration processes at a fraction of the price most solicitors charge.

**Give us a call for a
no obligation chat**

07594 56 00 11

www.personalisedsocialcare.co.uk



SOCIAL CARE

PERSONALISED SOCIAL CARE

SOLUTIONS

07594 560011

www.personalisedsocialcare.co.uk

Visit the Nkuku Lifestyle Store and Café

At Nkuku we create beautiful homewares, accessories and gifts. We work with artisans throughout the world, combining timeless design with traditional skills and natural materials.

The Nkuku café serves the finest artisan, wood roasted coffee; served by an experienced barista each blend has been personally curated ensuring a delicious flavour. The café serves brunch, cakes and light lunches.

The pretty courtyard features a covered seating area; the perfect spot to while away an afternoon.

Free parking and Wi-Fi available.

VISIT US

Nkuku Lifestyle Store and Café

Brockhill Barns

Harbertonford

Totnes

Devon TQ9 7PS

Tel: +44 (0)1803 465365

OPENING HOURS

Monday - Saturday | 9am - 6pm

Sunday and Bank Holidays |

10.30am - 4.30pm

www.nkuku.com



SECURITY

BIGBURY WATCH

(neighbourhood watch volunteers and local residents)

Eamonn & Linda Byrnes

01548 811104 / 07790 485102

eamonnandlinda@hotmail.co.uk

In an Emergency dial 999



To receive crime alerts emailed directly to your in-box - subscribe to **Devon & Cornwall ALERT.**

<https://alerts.dc.police.uk>

You can decide what topics you need to know about (marine crime, householder issues, fraud etc.)

Contact our Bigbury Watch Team - **Eamonn and Linda Brynes.**

NEW Home number 01548 811104

mobile 07790485102

eamonnandlinda@hotmail.co.uk

YOUTH

MODBURY PRE-SCHOOL

PL21 0RB

01548 831477

WAVES YOUTH CLUB

Meets in St Ann's Chapel Memorial Hall

Louise Pitt

07786 860440



Modbury Pre-School

Printed by
Bigbury News

CONTENTS

Local Communications	1
Bigbury Parish Council	2
Neighbourhood Plan	3 - 4
South Hams District Council	5 - 9
Devon County Council	8 - 9
Environmental Groups	10
St Lawrence Church	11- 12
Community Groups	12- 13
Beach & Burgh Island	14
Local Charities	15

BUSINESS DIRECTORY

Accounting & Tax	16
Architects	16
Artists & Authors	17
Beauty	17
Bike Workshop	17
Church	17
Computers	17
Electrics	18
Estate Agents	18
Fitness & Sport	19- 20
Fuel & Heating	19- 20
Graphic Design	20
Hotels& Hostels	20
Gardening	21
Health	21- 22
Home Deliveries	23
Legal	23
Music	24
Painters & Decorators	24
Plumbing & Heating	24
Property Rentals	25- 26
Property Services	25- 26
Pubs & Eating Places	27- 28
Sewing & Upholstery	28
Storage	29
Shops	29
Social Care	30
Security	30
Youth	30



MY CONTACTS

[illegible]

Bigbury Tea Garden

Serving the community for decades and now ONCE AGAIN OPEN

Wednesday – Sunday 11am to 5pm every week doing a roaring trade

-Devon Teas with delicious scones, Challons Combe Cream and home-made jam.

-Toasted Cheese Muffins with Cheddar and home-made Relish.

-Scrumptious Cakes, Cookies and Brownies all cooked in the café kitchen.



- Owens local Fairtrade organic coffee and Miles' tea.

- Home-made ice cream.

- Residents BYO on a Friday evening with £5 platter of irresistible morsels.

Ian Hammett

Come and enjoy the stunning views we had all forgotten

More Volunteers needed for 3 hour shifts to support this new community venture

Please message Charlie the manageress, on 0791 0076 382 to talk rotas