

**NEIGHBOURHOOD
PLAN Consultation**
Sat 2nd Feb 10 am - Noon

PARKDEAN JOBS FAIR
Sat 2nd Feb 10 am - 3 pm

HOTSY TOTSY Jazz
Fishermans Rest
Tues 5th Feb 7.00 pm

**DEFIBRILLATOR
TRAINING**
Wed 6th Feb 6.30 pm

FOOD & FILM NIGHT
Thur 7th Feb 7 pm

PATE & PUDS
Fri 8th Feb 12.30 pm

MACMILLAN QUIZ
Fri 22nd Feb 7.00pm

**BPC meeting changed to
20th Feb**

**SNOW WARDEN
needed**

**UP-COMING
BPC ELECTIONS**
Applicants invited



BigburyDrums
please  us.



BIGBURY ON SEA HOLIDAYS

Bigburyonsea.co.uk

The site for great holidays in a great community;
now gives the accommodation, holiday activities,
many useful links and maps.



Now features community events and dates.

Send any ideas for the site to

John@BigburyOnSeaHolidays.com

Unwind Hair Salon
Ladies & Gents Stylist
Krista Pickering
01548 810000
07808645981

Bigbury Village
TQ7 4AP
unwindhairbigbury@gmail.com
www.unwindinbigbury.co.uk



Unwind
Beauty ~ Massage ~ Skin Care

Bigbury Village
Kingsbridge
South Devon
Tq7 4ap

Leanne Pitt
07786860440
unwindinbigbury@gmail.com
www.unwindinbigbury.co.uk

Making sure that the
decisions you make now
will set you in good financial
stead for the future

Clarity offer clear financial advice*:

- Retirement Planning
- Inheritance Tax Planning
- Investment Planning

*Initial consultation will be at our expense, quote 'Bigbury News'

For further details contact us on:
Tel: 0800 2335599

Email: discover@claritywm.co.uk

Web: www.claritywm.co.uk

Clarity



.....
CELEBRATING 30 YEARS

******* LOCALS OFFER *******

Use the secret code "**BigOnes**"
when you arrive at The Shack to
get our special offers menu
Offers end 31st March
so make the most of them

Book online at www.oystershack.co.uk

Or telephone 01548 810876

Milburn Orchard Farm, Stakes Hill, Bigbury, TQ7 4BE



Open Wednesday to Sunday
12.00 to 3.00pm
Friday & Saturday
6.00pm to 9.00pm



LETTER FROM THE EDITOR

Dear Readers,

Welcome to the first Bigbury News of 2019. Thank you for all the support and encouragement you gave the Bigbury News Team in 2018.

The objective of Bigbury News in 2019 is to inspire more people to engage in the local community and help to enrich the lives of others by doing so. Newcomers to the parish are beginning to come forward to offer their services and are indeed very welcome and valued. The definition of a 'newcomer' varies of course, and it could even mean someone who has been here for many years but not yet been involved very much in community activities.

We are pleased to welcome **Eamonn and Linda Byrnes** into the role of coordinating **Bigbury Watch**. **Marina Leadbetter**, who has lived here less than one year, is very busy helping out as Advertising Manager for Bigbury News.

FREE COPIES

Bigbury News - to 450 homes in Bigbury

THANKS to volunteer DISTRIBUTION TEAM

DONATIONS

welcome all year round

cheques 'Bigbury News' post to - The Editor, Bigbury News, Long Easton, Easton, TQ7 4AN.
or ask Editor for BACS details

SUBSCRIPTIONS

2nd class post to UK mainland
£30 per year (10 issues - colour version)
payments as detailed above.
bigburynewseditor@gmail.com
01548 810991

HOLYWELL STORES

free copies

FREE DOWNLOADS

<https://bigburydrums.wixsite.com/bigburydrums>

Volunteering or joining local clubs is a fun way of belonging to something. Bigbury News and the website, Bigbury Drums, will publish opportunities for volunteers. Please check it out.

bigburydrums.wixsite.com/bigburydrums

You could even come up with an idea for a new Club or a fund-raiser yourself! If you want to find out if anyone else would like to meet up to discuss this - you can use the **Bigbury Drums Facebook** page to raise these ideas.

www.facebook.com/bigburydrums

If you don't know how to do this, please contact the Bigbury News Editor who will be happy to assist.

Chairman of BPC, **Bryan Carson**, reminds us that there will be an **Election for parish councilors in May**. This is a great way of contributing to the community. **Hannah Getley** has recently resigned and we owe her a big thank you for all her hard work in the past. Our parish council consists of a team of dedicated local residents who have been, most ably, representing us for the last four years. We hope that most of them will want to continue in this role. There will only be an election though, if there are more than the minimum number of volunteers who put themselves forward for election. If you want to know more about what happens at parish council meetings and what the role of a parish councillor involves - why not attend the next parish council meeting? Meetings are held on the second Wednesday of each month - starting at 7.30 pm. The meetings prior to the Elections will be at the Memorial Hall in St Ann's Chapel on **February 20th***, March 13th, April 10th and May 8th. (* note change of date from 13th Feb)

Nearly 300 Bigbury News readers have signed up to receive the **weekly Bigbury Drums digest of local events**. A gallery of local events posters will be delivered to your in-box on a weekly basis. Please help organisers to recruit higher attendances at events, by encouraging as many people as possible to join the Bigbury Drums list. Ask the Bigbury Drums editor to add your email address. If you are already on the list, please forward your email to people in your address book so that they can join in too. We are now also advertising events happening locally, in **Ringmore, Modbury, Kingston, Aveton Gifford and Kingsbridge**.

Henry Wainwright has volunteered as Treasurer and takes over from **Lucinda Ellis** who valiantly held the fort when I

CONTENTS

Letter from the Editor	3
Memorial Hall Events & Bigbury Ladies	4
Bigbury Community Coffee Morning & Bigbury Bookworms	5
Clubs & Societies	6
Defibrillator Training	7
St Lawrence Church	8
FEBRUARY CALENDAR	11
Bigbury Business Directory & Bigbury Drums	12
Take a Walk on the Wildside	12, 13
Re-Birth of Burgh Island	14, 15
Conceit of the Average Dog	14
Ode to a Pub Car	17
Bigbury Bio Blog	18, 19
Bigbury Watch	20, 21
Pub Cat Speaks	22, 23
CHURCH APPEAL	24
MARCH CALENDAR	26
Beach Banter	28, 29
Bigbury Bakers and Nineteenth Hole	31
BPC Minutes	33, 34

suddenly found myself without a Treasurer last year. **Lucinda and Aidan Ellis** will continue to help me with the Pre-Flight Checks and have been instrumental in the many improvements you have seen in the layout and proof reading. The earlier Copy date allows more checks to be completed. Please help us by trying harder to get your final posters and words to us as early as possible. *{All errors this month are all my fault as due to a family emergency I have had to go to print quickly this month without checks!}* **Dane and Hilary Vanstone** have kindly taken on the role of Distribution Managers and will ensure the valiant Distribution Team get their bundles each month. So - thanks to all contributors, advertisers, readers, subscribers and donors for making the midnight oil worth burning!

Louise Wainwright
Bigbury News Editor

COPY DATE
15th of the
preceding month

DISCLAIMER

Bigbury News and Editor cannot be held responsible for any loss or inconvenience caused by any inaccurate information contained within this magazine. Please contact the relevant party directly to confirm the details of any information or event. Inclusion of a business advertisement does not imply a recommendation by Bigbury News or the Editor. Please take up references of previous clients or customers before enlisting the services or products advertised herein.

Feature Contributors: *Stuart Watts and Fiona Barker (Bigbury Bio Blog), Norman Botton & Trish Bagley (Take a Walk on the Wildside), Richard Matthews (Parish Minutes), Valerie Scott (Neighbourhood Plan), Marlene Johnson (Nineteenth Hole), Alice Taylor (Hedgerow News), Matilda Pitt (Waves Youth Club), Rusty (ODA Agent) and Monty (The Pub Cat).* **Event Reporters:** *Sally Watts and Charles Harrington, Michael Tagent, Hazel Osborne, Jean Wright and Yvonne Klidjian.*

Photo credits:

Louise Wainwright, Alice Taylor Marlene Johnson and Oyster Shack.

Editor Louise Wainwright bigburynewseditor@gmail.com 07908 525663 (01548) 810991 Long Easton Bigbury TQ7 4AN

Advertising: Marina Leadbetter **Treasurer:** Henry Wainwright: Pre flight Checks Lucinda & Aidan Ellis; Distribution Managers: Dane and Hilary Vanstone; **Bigbury Communications Team:** Stuart Watts, Lucinda & Aidan Ellis, Rose Owen, Valerie Scott and John Davies.

Distribution Team: Simone Stevens, Jim Bennett, Don Dyke, Peter & Gill Cook, Trish Bagley, Jill Gubbins, Suzie Owlett, Danny Grace, Burgh Island Causeway, NISA shop, Park Dean, Noel & Ursula Thornton, Sally Watts, Margaret Singleton, John Simes, Elise Wilson, Jenny Verv. Jane Tucker. Ann Lamble. Burgh Island. Pickwick. Hexdown. Ovster Shack. Venus Cafe. Jas & Jaswinder Kooner at Holwell.



BIGBURY LIFE

BIGBURY MEMORIAL HALL

Bringing the Community Together

It was good to see the Hall decorated so nicely before Christmas – our thanks go to **Louise Pitt, Juliette Jackson** and the **Youth Club** for doing this.

In the run up to Christmas we held a Wine Tasting Evening at which Kingsbridge wine merchants Barrel & Still gave an informative and entertaining presentation of eight great wines, attended by over 20 people. Tasty nibbles were supplied by the Committee.

Fifty-one people enjoyed our annual Quiz Night held on 11th January. A good mix of questions on the geography of the British Isles, food and drink, and well known sayings by TV entertainers, were read out by our question master **Robbie** and we also had to identify photos of food and drink labels and past TV shows. Welcome pasties were provided to give sustenance to our brains. The winners were **Chris Curgunven** and her table with **Fiona Dukes** and her team a close second. Well done to these Bigbury brains.

Our next event is the ever-popular series of **Film and Food Nights on February 7th**. The film this time is **Finding Your Feet**, an English romantic comedy with a great cast, including Emelda Staunton, Timothy Spall, Celia Imrie and Joanna Lumley. As usual the food will be supplied by **Kate @ Folly**. It should be a very entertaining evening. Tickets obtainable from **Holywell Stores** or **Angie Bond** (tel. 811131).

Our next Villages in Action sponsored event is **Science Adventures – a Coppice Theatre** production on **Saturday 9th March at 11.00am**. This should appeal to 5 – 12 year olds and their families and should be really entertaining – more details next month but do note the date now. National Science week begins on 9th March so this fits in really well.

Finally, news of a new regular group who have booked the Hall. Well, not new exactly in that the coffee morning that was held for many years at the Korniloff will now take place at the Hall. Its new title is the **Bigbury Community Coffee Morning** and it will meet on the first Wednesday morning of each month. We are very pleased to welcome them.

Charles Harrington

MEMORIAL HALL EVENTS (Feb 2019)

St Ann's Chapel TQ7 4HQ

<u>Day & Time</u>	<u>Activity</u>	<u>Organiser</u>	<u>Contact no.</u>
MON 9.30 – 10.10	Aerobics	Jill Gubbins	810651
10.15 – 11.15	Pilates	Jill Gubbins	810651
11.20 – noon	Strong & Steady (plus tea)	Jill Gubbins	810651
TUES 13.30 – 15.30	(from Feb) Bridge	Jan Lucas	831244
17.30 – 19.30	Youth Club	Juliette Jackson	810307
THUR 9.30 – 10.00	Fast Fit	Jill Gubbins	810651
10.15 – 11.15	Pilates	Jill Gubbins	810651
19.30 – 21.30	South Hams Filling Station (3 rd Thurs. of month excl. Dec & Aug)	Gilbert Snook	810017

Future events:

Saturday 9th March: 11.00am Science Adventures for 5- 12 year olds and their families. A Villages in Action/Carn to Cove event. See poster next month for further details.

50/100 Club. Promoted by **Dane Vanstone**. Our first draw of 2019 was made at the Quiz Night on 11th January. The winners were **Trish Bagley** (£20) and **Sally Watts** (£10). Join now (£10 for the 10 months to October) to have a chance of winning the monthly draw. 50% of the money goes in prizes and 50% to the Hall. Tickets from Holywell Stores.

BIGBURY LADIES

Ten of us met up for lunch in Bigbury Golf Club in January to decide on the proposed meetings for 2019. We usually meet on the third Wednesday of each month at Helen Smith's house before proceeding to that month's venue. Fixtures may be liable for alteration sometimes. The suggested calendar of meetings is as follows: -

20th Feb Darts Farm, Topsham
20th Mar IKEA, Exeter
17th Apr Anthony House, Cornwall
15th May Dartington Hall
19th Jun River trip Totnes to Dartmouth
17th Jul Mt Edgcombe (via Cremyll Ferry)
21st Aug Helen Smith's:
Bring a plate lunch
18th Sep Overbecks, Salcombe
16th Oct Avon Mill for lunch
20th Nov Sloop Inn, lunch
11th Dec Christmas lunch at
St Elizabeth House.

We usually meet up at Helen's (about 10.30 a.m. – 11.15) and then proceed from there, having sorted out volunteer drivers. We welcome all ladies from the Bigbury area and are a very informal "bunch". We do not have a Chairman, Secretary, membership fee etc – we are just a group of ladies who like to meet up for a natter once a month. We usually visit somewhere not overly far away and often for a lunch according to your individual choice be it a sandwich, bowl of soup of fish and chips etc..

If you would like to join us, you are very welcome to make me the first point of contact or ask any of our usual members e.g. **Helen Smith, Chris-sy Curgunven, Rose Owen, Lynn Hiscock** etc.

Pam Trundle Tel: 801 719

NOTE: JILL GUBBIN'S CLASS TIMES NOT CORRECT IN MEMORIAL HALL ADVERT – (due to late amendments) PLEASE CHECK THE CALENDARS page 11 & p 26 and JILL'S ADVERT on page 10

MEMORIAL HALL EVENTS changes

Dee Fitzgerald is looking for more people interested in joining an INDOOR BOWLS fun evening once a week (19.30 – 21.30).
Contact Dee on 811191

South Hams Shrimps (toddler group) not currently running due to not enough 'shrimps'.



BIGBURY COMMUNITY COFFEE MORNING

On Wednesday 5th December the Korniloff coffee morning raised £685 for St Lawrence Church Bell and Tower restoration fund.

Thank you to everybody who came and supported us so generously. Many thanks to all those people who made the festive goodies and manned the stalls. There was a wonderful selection of goods and a festive feel.

During 2018 we have raised £2211 mainly for local charities.

On **Wednesday 6th March** we will be supporting **Modbury Caring** and we look forward to seeing you between 10.30 and noon at the Memorial Hall in St Ann's Chapel.

Jean and Yvonne

CONGRATULATIONS to Jean & Yvonne and their dedicated team of helpers who bring their wares, set up the stalls and sell their goodies to raise money for local charities. £2,211 is an amazing amount to raise in 2019.

Please come and support them and enjoy getting together with other members of the community once per month. The coffee and cakes are amazing. Jean's Homity pies and savories are all home made and delicious.

Put it in your diaries now:
FIRST Wednesday every month
Memorial Hall, St Ann's Chapel
10.30 am to noon
(no event in February)



BIGBURY BOOKWORMS

The January meeting of Bigbury Bookworms was cancelled due to illness and holidays.

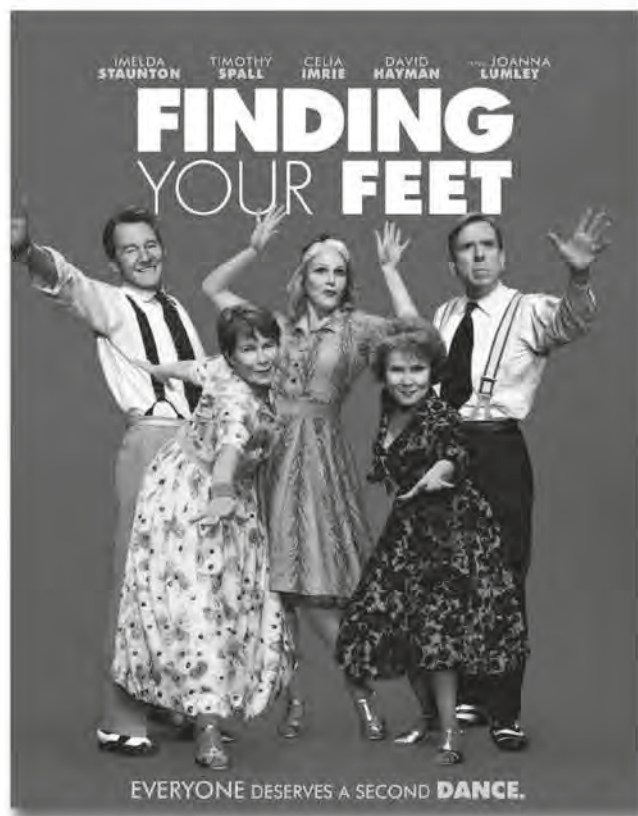
We will next meet on February 6th when Liz Edwards will host the afternoon.

Hazel Osborne

FILM NIGHT

BIGBURY MEMORIAL HALL

Thursday 7th February 2019 from 7.00pm
(film starts at 8pm)



SUPPER from Kate @Folly

Please bring your own drinks and glasses

Tickets £10 - on sale at Holywell Stores

SOUTH WEST DEVON CONSERVATIVE ASSOCIATION Charterlands Branch

Invite you to

“PÂTÉ and PUDS”

FRIDAY 8 FEBRUARY 2018

12.30pm

at
Scobbiscombe House, Kingston TQ7 4EU

Tickets £10.00 each

to include welcome drink

Please contact Gill Cook 01548 810156

ARTS SOCIETY KINGSBRIDGE

Meetings in Kingsbridge Methodist Hall, 100 Fore St. TQ7 1AW
Weds 7.30 pm & Thurs 10.30 am
Visitors always welcome on payment of £8 which includes tea/coffee.

February 2019 Weds 27th/Thurs 28th
The Architecture of the British Raj is remarkable, 'Let's celebrate it.'

Anthony Peers. Anthony will talk about Colonial Architecture in India, the buildings, their history and their future. Focusing initially on the work of George Gilbert Scott in Mumbai he will branch out to consider the broader historical, cultural and architectural context of the archaic true of the British Raj.

March 2019 Weds 27th/Thurs 28th
Stories in Stained Glass Speaker **Susie Harries.** Susie's talk looks at the stories that stained glass can tell; that can be used to play politics, bribe bishops, recruit soldiers and tell jokes. She will include stories that relate to our area: our saints and our sinners!

April 2019 Weds 24th/Thurs 25th
Zaha Hadid - Architectural Superstar
Speaker **Colin Davis** Colin will tell the story of her career from the visionary projects of the 1980's, through the years of frustration when her designs were considered impossible to build, to the prolific crop of successful projects built all over the world in the last decade of her life.

Visitors always welcome on payment of £10 which includes tea/coffee.

Further details from Gill Markham at gill.markham@talk21.com or 01548 724 364 or 07831 448 203

Gill Markham

SOCIAL GROUPS

BIGBURY BOOKWORMS

Hazel Osborne (temporary contact)

BIGBURY LADIES

Pam Trundle 01548 810719

BRIDGE

Jan Lucas 01548 810335

HISTORY SOCIETY

Charles Harrington 01548 810023

BIGBURY COMMUNITY COFFEE MORNING

Yvonne Klidjian and Jean Wright
yvonneklidjian@btinternet.com
01548 810029

MEMORIAL HALL CHAIRMAN

Charles Harrington
charles_harri@yahoo.co.uk 01548 810023

COMMUNITY SPIRIT, CLUBS & SOCIETIES

The Winter Warmer Soups initiative didn't work out as well as hoped but it was a great idea. Thanks to **Gill Middleton, Sheridan Furber** and **Sally Watts** for getting behind Tristan to give it a 'go'.

A number of 'New Bees' have come forward to volunteer for roles in the community

We have some great clubs and societies that give us the opportunity to get together. **Jill Gubbins** runs some fun exercise classes at the Memorial Hall every week. Apart from the obvious health benefits, it's also a way to meet other people. The **Bigbury Golf Club** welcomes non-members and invites you to join as a social member if you don't play golf. If you have not already joined in any of these groups, why don't you do this in 2019?

Perhaps you will be inspired to form a new Bigbury group and want to know if anyone would be interested in joining forces with you to organize this? You are welcome to use the Bigbury Drums Face book page to do this or ask the Bigbury News editor to post a letter from you in the March edition.

It's a great way for our community to tighten those bonds, both ways, and enjoy being together in the dark winter days.

Louise Wainwright



Why don't you consider whether you could spare a few hours per week in 2019 for the **Modbury Caring Befriending Service**? Or - perhaps you feel that you, yourself would benefit from a few hours a week from a Befriender? The giving and receiving of the gift of friendship is the fabric of a strong Community. It's equally important that Befrienders are invited into homes - as it is that people volunteer to be Befrienders. Both benefit. Find out more from the Befriending Coordinator, **Sheila Harrison**. Sheila's contacts: **07554 997140** or **modburycaring@gmail.com**. You can also drop in to see her on Wednesdays from 11.00 – 12 noon at the Modbury Parish Office by the Co-op in Galpin Street, Modbury.

<http://modburycaring.org.uk>

Louise Wainwright

BIGBURY NEWS TEAM

THANK YOU!!

DISTRIBUTION MANAGER

Dane and **Hilary Vanstone** have very kindly volunteered to oversee the Distribution of Bigbury News. They will collect the finished, bagged and labelled magazines and make sure they reach the much-valued **DISTRIBUTION TEAM.**

Please see below more opportunities for you to contribute a little of your time every month to the much loved Bigbury News.

SUB EDITOR for BEACH BANTER

Beach Banter brings together news and views from the island, beach, sea, and riverside. Do you live in **Bigbury on Sea** and like taking photographs of what is happening down there? You would be ideally placed to be the roving reporter and send me the information needed. Perhaps it could be a group of friends who do this for Bigbury News? What Fun!

Beach Banter needs about five photos per month with no more than 150 words to go with each photo. You would need to talk to the sponsors, **Venus, Burgh Island and Discovery**, each month to check if they want any news items posted. Otherwise, just keep your eyes and ears open and give people a flavour of what is happening out there! Hope to hear from you!

PRODUCTION MANAGER

The printer for Bigbury News is at Long Easton and needs to stay there. If someone was willing to help with the printing, they would have to come to Long Easton to oversee the printing operation - clearing jams, replacing ink cartridges, loading paper etc. Someone needs to be there all the time during the print run. This could take about 15 hours and can be done over three days. I can provide training and it's not that difficult - if I can do it!

Whilst you are supervising the printing. I would be writing the next Bigbury News, so I would be nearby if there was a problem.

We have a team who fold, staple, bag and label the magazines. Do you think you can help me with this? Please call me 01548 810991 / 07908 525663

Louise Wainwright

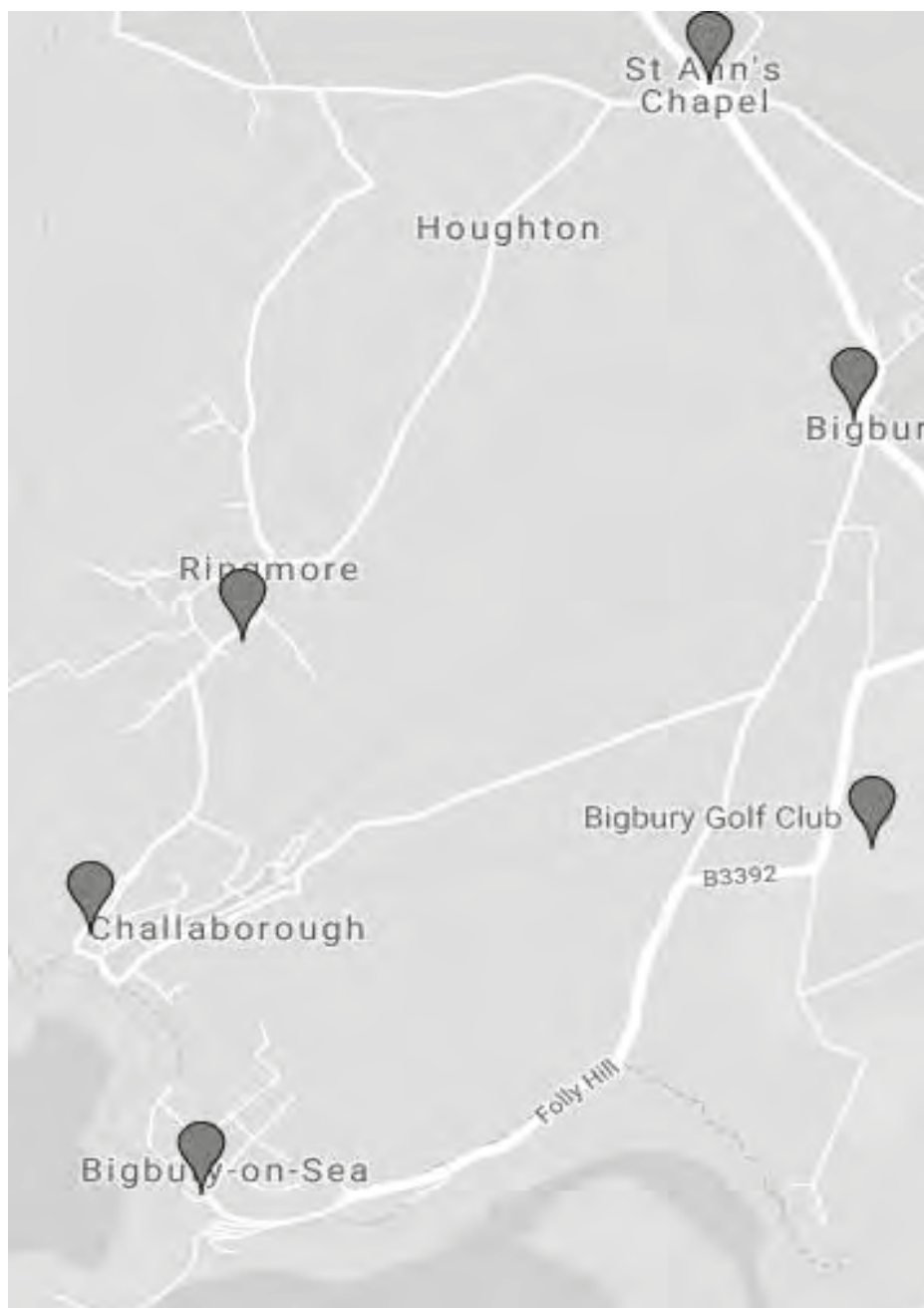


CREWS THAT KEEP US CRUISING



Local people at last year's training event in Ringmore - run by our First Responder, **Nigel Toms** and **Steve Comely**.

LEARN HOW TO SAVE A LIFE!



BIGBURY PARISH DEFIBRILLATOR SCHEME

Bigbury Parish is part of the Community Public Access Defibrillator (cPAD) scheme, administered by the South-Western Ambulance Service. The cPAD scheme provides annual training, a 24hr support service to trained staff including a counseling service and full support for devices including replacement electrodes and batteries.

These defibrillators can be used by the general public with or without little training, nevertheless we are going to invest in South-Western Ambulance Service training sessions. The next CPR & Defib session will take place at the:

Memorial Hall St Ann's Chapel on Wed 6th February 2019 at 6.30 pm.

We encourage the community to attend. No need to book. Light refreshments provided. Further information contact: **Yvonne Klidjian** 810971, **Jeremy Gilbert** 810235 or **David Gay** 810146

LOCATIONS OF DEFIBRILLATORS

Outside **HOLYWELL STORES** near telephone box (St Ann's Chapel)

Outside the **UNWIND** beauty salon at BIGBURY

At **BIGBURY GOLF COURSE**

In the Bus shelter at **BIGBURY ON SEA**

Outside the **NISA SHOP** at **CHALLABOROUGH**

BIGBURY CARES CHARITY UPDATE to mid Jan

Please can all fund raisers provide Bigbury News with the total monies raised at their events for inclusion in the Bigbury Charity Barometer. Thank you.

HELPING HANDS NEEDED

More people are needed for cleaning the church at Bigbury. A few times per year would be much appreciated. Let Pat know if you're able and willing.

Pat Holness

810116

holness313@btinternet.com



FILLING STATION

In need of spiritual fuel?
Top-up here.

Thursday 21st February 2019
at 7.30 to 9.00 pm
Speaker: **Rachel Greenwell**
Topic: **Love on Another**

Our speaker this month is Rachel Greenwell. She is the regional representative for Open Doors, a charity that supports persecuted Christians worldwide.

The Filling Station is a new informal way of expressing the Christian faith using local mid-week monthly celebration meetings in a cafe-style setting. In a relaxed and friendly atmosphere with tea, coffee and cake. We have a worship time and a speaker. Prayer Ministry is always available.

EVERYONE IS WELCOME.

Filling Station is an inter-denominational fellowship which hopes to benefit the local church.

Gil and Kate Snook 01548 810017



LETTER from MINISTER at ST LAWRENCE

SOWING SEEDS

February can be a time of looking ahead beyond the dark cold days of winter to the spring and summer, maybe planning or booking holidays or dreaming of those already booked. For gardeners it can be a time of planning and preparing for the plants and crops which are going to make their gardens burst into flower or produce the vegetables for their tables. It's a time for purchasing and maybe starting to plant the seeds that will enable these dreams and plans to come into being, as gradually over the months these lifeless dried up grains, watered by the rain and warmed by the sunshine, burst into life and grow into fine plants. Often all this happens without any further input from the person who planted them.

The Bible contains a number of Jesus parables in which he drew parallels between the growth process of seeds and plants and the development of faith. In one of these he tells us that the Word of God, like the seed, grows in God's good time, and this reminds us that we often never know what an effect the evidence of our faith in our lives is having on the people with whom we come into contact. Nor do we know what effect the experience of bringing a child to church for baptism will have on the child's parents, godparents or family members. It may well be that on that day a seed of faith is sown in someone's heart, which in God's good time will start to grow, and as Jesus reminds us, in another seed related parable, just as a minute seed can grow into a big bush, so that tiny seed of faith could grow into something big.

When we think about it, aren't we as individuals very similar to seeds and plants? Just as the growth of a seed is influenced by the things around it, so our development as individuals is influenced by the conditions and the people around us - starting from our childhood and continuing throughout the whole of our lives. So how important it is that we affirm, encourage and support one another! When we think that someone has done something well, why not tell them? When we know that someone is going through a rough time, why not offer help or support instead of assuming that their family is already supplying all their needs? Often it is the knowledge that people care that can make all the difference to the life of a lonely person, and can sow the seed of hope for the future in their hearts.

Joyce Howitt

Vicar: The **Revd Matt Rowland** (830260: every day except (normally) Saturday)

Readers: **Joyce Howitt** (01364 73093), **Michael Tagent** (810520)

Website: www.modburyteam.org

SUNDAY CHURCH SERVICES IN FEBRUARY

	Aveton Gifford 11.00 am	Bigbury 11.00 am	Kingston 9.30 am	Modbury 9.30 am	Ringmore 9.30 am
3 rd	Sunday Worship	Communion*	Communion	Communion	Sunday Worship
10 th	Communion	Sunday Worship	Sunday Worship	Communion* (8 am) All Age Service	Sunday Worship
17 th	Lay led service	Sunday Worship	Communion (11 am)	Communion by Extension	Village Service
24 th	Communion	Team Evensong (4 pm)	Village Service	Sunday Worship	Communion

SUNDAY CHURCH SERVICES IN MARCH

	Aveton Gifford 11.00 am	Bigbury 11.00 am	Kingston 9.30 am	Modbury 9.30 am	Ringmore 9.30 am
3 rd	Sunday Worship	Communion*	Communion	Communion	Sunday Worship
10 th	Communion	Sunday Worship	Sunday Worship	Communion* (8 am) All Age Service	Sunday Worship
17 th	Communion	Sunday Worship	Communion (11 am)	Communion	Village Service
24 th	Sunday Worship	Communion	Sunday Worship	Sunday Worship Living Room (6 pm)	Communion
31 st	Team Communion (10.30 am)				

* Service in traditional language

BIGBURY LIFE

CAROLS on the GREEN BIGBURY THANKS

An estimated 150 people assembled on Bigbury Green for 'Carols on the Green' which has now become a regular event. It began some years ago when Angie and Bryan Carson owned the nearby Royal Oak pub. It's a great time for visitors and the extended families of local people to get together. Our thanks go to Fiona Barker, Dane Vanstone, Hilary, Jeremy, Elaine, Keith, Mary and the musicians organised by Angie and Fiona.



Modbury Pre-school
2-4 year olds
9am-3.30pm
Monday-Friday
Term time



Modbury School's Out
3-11 year olds
7.30-6 (Term time)
8.00-5.30 (School Hols etc. Christmas)
Monday-Friday

Provider of
'Extended Entitlement Hours'
(term-time or stretch offer)
for 3-4 year olds.
Provider of
'2 year old funding'




WELCOME

to any new youth from the village.
Come and join us!

Tuesday pm 5.30 -7.30

£1 entry. Ages 7 -13

Memorial Hall, St Ann's Chapel.

Louise Pitt

07786 860440 / 01548 810000



WHY not find the public footpath to TURTLE FARM and buy some **WILD BIRD SEED** for the Hungry Month for our hedgerow birds?



FRIDAY 22 FEBRUARY AT 7 PM

BIGBURY MEMORIAL HALL



£10 pp inc. pasty plus bottle of wine per team of 6.

Bring own glasses & cash for raffle

**Tickets: FIONA DUKES 07776 263827
HOLYWELL STORES St. Ann's Chapel**



Fundraising for

**MACMILLAN
CANCER SUPPORT**

Registered in England 11300000. Charity No. 251205. Registered Office: 11300000, Bowling Green Cross, Bigbury, Oxfordshire, OX12 9JG. Registered in England 11300000. Charity No. 251205. Registered Office: 11300000, Bowling Green Cross, Bigbury, Oxfordshire, OX12 9JG. Any company registered in England 11300000. Charity No. 251205. Registered Office: 11300000, Bowling Green Cross, Bigbury, Oxfordshire, OX12 9JG.

Turtle Farm Produce

Autumn / Winter

Fri & Sat

Open 11am - 4pm

Plants - Many shrubs & Climbers

Ready potted Spring Flowering Bulbs



Marmalade & chutneys

Wild Bird Food

Seasonal vegetables & potatoes

Free range eggs

Farmer Toms Ice Cream on sale

*** HOME PRODUCED LAMB and PORK ***
Assorted flavoured sausages & burger, chops available
Challonscombe Dairy Products

*We are in the same place, polytunnel on top of the hill -
Bowling Green Cross*

Two ways to get to us -

*The turning on the bend before the golf course -
or on the Bigbury Village to Challaborough / B-o-S, road*

Phone evenings - 01548 810923 - WE CAN ALSO DELIVER



KINGSBRIDGE JAZZ CLUB

LIVE MUSIC

(Normally) first Tuesday every month

Fisherman's Rest

AVETON GIFFORD

doors open 6.30, start 7.30 pm

NON-MEMBERS WELCOME

Tues 5th Feb
HOTSY TOSY
all girls band

Tues 5th March
HOT FINGERS with
EMILY CAMPBELL



kingsbridgejazzclub

The Journeys End Inn

A warm welcome awaits you in our traditional 13th century pub

Award winning food and ales, large beer garden.

Tues-Friday 12.00-3.00 & 6.00-11.00

Saturday & Sunday open all day

Food available from 12.00-2.00 and 6.00-8.30

(No food Sunday evenings)

(01548)810205 The Journeys End, Ringmore, TQ7 4HL



GET YOURSELF

'FIT TO GO'

WITH JILL

MONDAYS at
BIGBURY MEMORIAL HALL
AEROBICS
9.30 - 10.10
PILATES
10.15 - 11.15
STRONG & STEADY
11.30 - 12.10 + tea

TUESDAYS at
BURGH ISLAND CAUSEWAY
LEISURE CLUB
AQUA FITNESS
(Club members only)

WEDNESDAYS at
MARS PAVILION, MODBURY
AEROBICS
9.15 - 10.00

STRONG & STEADY
10.15 - 11.00 + tea

THURSDAYS at
BIGBURY MEMORIAL HALL
PILATES
9.15 - 10.15

BONES BONUS
10.15 - 10.30

PLEASE NOTE, NO CLASSES BETWEEN 15th AND 24th FEBRUARY

Experienced qualified teacher; equipment provided; friendly mixed classes; great value.

For more details, please call JILL on 01548 810651.

FITNESS SO CLOSE TO HOME!

PLEASE CALL IF THINKING OF STARTING THURSDAY CLASSES

The California Inn

Award winning A La Carte Menu and Bar Menu

Function/Meeting Room

Free WIFI Dog Friendly



Happy Monday

Pie & Pint £10

Ruby Tuesday

Curry & Pint £10

Jockey's Wednesday

Fish & Chip & Prosecco £10

Jo's Thursday

Steak £12.95

Food Daily

12-2pm & 6-9pm

Sunday Lunch

12-2:30



California Inn

California Cross

Ivybridge

PL21 0SG

thecaliinn@yahoo.com

www.thecaliforniainn.co.uk

TEL: 01548 821449

THE PICKWICK INN

WWW.PICKWICK-INN.CO.UK

01548 810310



Eryer Tuck's Take Away

CHALLABOROUGH BAY

Tel: 01548 810425

Award-winning

FISH & CHIPS

Pasties - Pizzas - Pies

Sakombe Dairy Ice Cream

Beach Goods - Wet Suits
Boards for Hire

HOURS OF OPENING 1st April-end Oct

Daily 10am to 10pm

SUNDAY	FEB 2019			
	3 St Lawrence Service 11.00 am Sunday Worship	10 St Lawrence Service 11.00 am Communion	17 St Lawrence Service 11.00 am Communion	24 St Lawrence Service 11.00 am Communion
MONDAY	BLACK bins 4 Fit-2-Go MH AEROBICS 9.30 - 10.10 am PILATES 10.15 - 11.15 am STRONG & STEADY 11.30 - 12.10 + tea	BROWN bins 11 Fit-2-Go MH AEROBICS 9.30 - 10.10 am PILATES 10.15 - 11.15 am STRONG & STEADY 11.30 - 12.10 + tea	BLACK bins 18	BROWN bins 25 Fit-2-Go MH AEROBICS 9.30 - 10.10 am PILATES 10.15 - 11.15 am STRONG & STEADY 11.30 - 12.10 + tea
TUESDAY	<div>5</div> <div>BIGBURY NEWS accepts no responsibility for errors in the calendar. Check with organisers about tickets & times.</div> <div>YOUTH CLUB 17.30 -19.30 MH</div>	12 YOUTH CLUB 17.30 -19.30 MH	19	26 YOUTH CLUB 17.30 -19.30 MH
WEDNESDAY	6	13	20	27
THURSDAY	7 Fit-2-Go MH PILATES 9.15 - 10.15 am BONES BONUS 10.15 - 10.30	14 Fit-2-Go MH PILATES 9.15 - 10.15 am BONES BONUS 10.15 - 10.30 VALENTINES DAY	21	28 Fit-2-Go MH PILATES 9.15 - 10.15 am BONES BONUS 10.15 - 10.30
FRIDAY	1	8	15 MACMILLAN QUIZ 7.00 - 10.00 pm	
SATURDAY	2 NHP CONSULTATION 100 am to Noon PARKDEAN JOBS FAIR 10 am to 3 pm	9	16	23

WHAT'S ON NEARBY?

AVETON GIFFORD

5th Feb 7 -10 pm
 HOTSY TOTSY
 Jazz at
 Fisherman's Rest

MODBURY

7th Feb 7 - 9.30 pm
 Devon Rural Archive
 Plymouth's Bloody
 History

RINGMORE

14th Feb 7 - 10 pm
 Valentine's
 Meal & Quiz

16th Feb 7.30 - 10 pm
 Film Night
 "Sully"

LODDISWELL

8th Feb 1 - 4 pm
 Harvest Mouse
 training

**See posters on
 Bigbury Drums for
 details**



HAVE YOU BOOKED

A TABLE at any of
 our great local pubs
 or
 restaurants on

**VALENTINE'S
 DAY**
 (14th Feb)

See adverts in
 Bigbury News for
 telephone numbers.



BIGBURY DRUMS



**BIGBURY
BUSINESS DIRECTORY**

Please help to keep our
Community alive
by supporting
local businesses and jobs.

Prepared by Bigbury News from details of advertisers. If you would like to advertise your business in Bigbury News please contact our Advertising Manager - bigburynewsads@gmail.com

DOWNLOAD your free LOCAL BUSINESS DIRECTORY from the BIGBURY DRUMS website.



devon COW
graphic design

...in the South Hams and beyond

Adverts • Artwork
Banners • Brochures • Branding
Business Cards / Stationery
Digital Art • Flyers • Invitations
Labels • Leaflets • Logo Design
Menus • Posters • T-Shirts
Wedding Stationery and more!

find out what the moo can do for you...

☎ 07856 550 239
✉ devoncowone@gmail.com
🌐 www.devoncow.co.uk

ATTENTION

Advertisers and Events Organisers may be able to promote themselves better if they use the services of our local graphic designer - **Karen Lawrence** who is 'Devon Cow'. Please see poster (left).

Karen has very reasonable rates for Bigbury News customers. Why not - give her a call.

WALK NOTES

A short walk to blow the cobwebs away after Christmas and New Year festivities. It is a walk which deliberately avoids both pub and food shop, so you will not need money but you will need waterproof or sturdy footwear.

1. Park the car, (664467) enter the field and follow the footpath (FP 14) around two sides of the field.

2. Straight through the first gate and take the footpath (FP 19) on the left immediately in front of the pond (663467). Follow it down through the delightful wood.

3. Leave the wood, hug the right hand side of the field until you find and cross the stile onto a farm track (660457). Turn left.

4. Up farm track (FP 9) for a couple of hundred metres then left into the woods, the path goes up the stream (662459) but you are wearing your suitable footwear.

5. After path dries out look out for signpost (664461) that takes you left into the field where the old village of Bigbury was located.

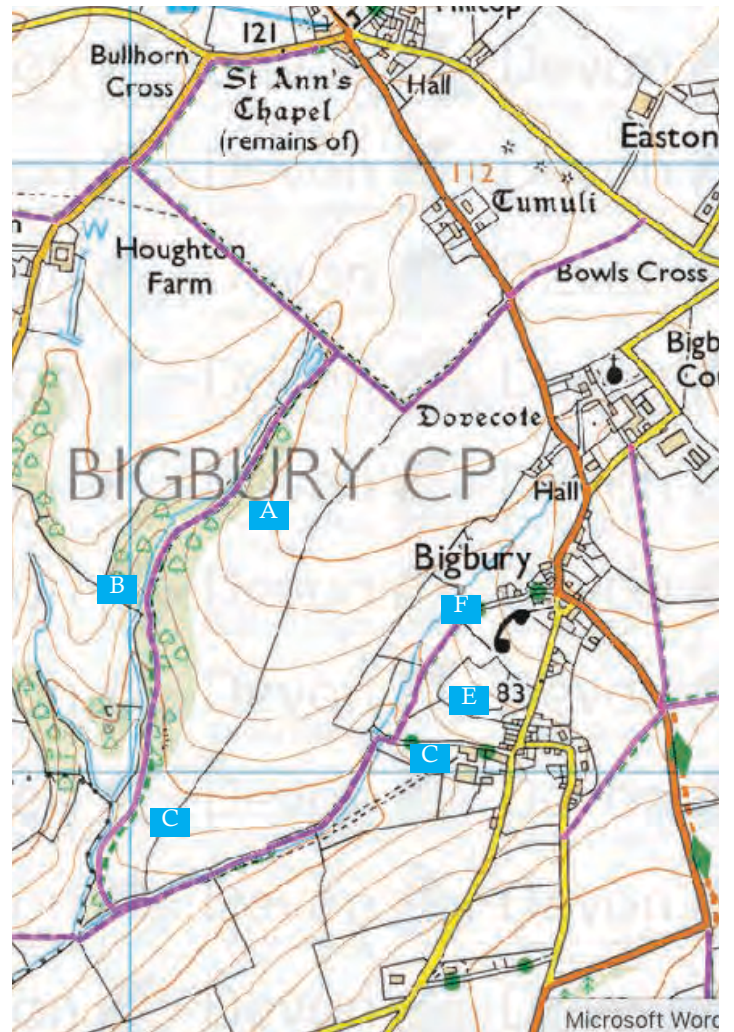
6. Head up the path (FP 8) to Bigbury village green (667463) where you turn left on main road to walk no more than 400 metres back to the car. Look out for pond and tasteful barn conversion on your left and the ancient dovecote on your right. Look out for cars as well!

Norman Botton & Trish Bagley.
Footpath Wardens



Please encourage your tradesmen and service providers to advertise in Bigbury News.
EVERY LITTLE HELPS! Thank you.

TAKE A WALK on the WILDSIDE - view points•



RE-BIRTH of BURGH ISLAND

It is January and late afternoon so the skies are growing darker, but inside the Pilchard Inn on Burgh Island there is a wonderful 'safe haven' feeling emanating from the log fire. In a corner by the bar, a green parrot is perched forever in a glass display cabinet. His head is fixed in a jaunty, inquisitive angle and his eyes seem to beg an introduction from me. But I have not come to interview him, although I am sure he has many stories to tell. That discovery will have to wait.

The Pilchard Inn is said to date back to the 16th century when it was used in connection with the fish cellars on the island. Its thick, white walls are custodians of a rich social history dating back to the days when fishing for pilchards was an important activity for the folk that lived on the shores that cradle the island when the tides are out. The tides continue to dictate visits to the island as the causeway opens and closes the sand spit that connects the island to the shoreline. It is an adventure worth the effort, to venture across to the Pilchard Inn during the winter months. The migrant flocks that fill the bars in the summer months are not there and we have the Pilchard Inn to ourselves.

I am fascinated to find that there is a Pilchard Ale on offer. The Pilchard is open seven days a week over the winter and the island will soon be publishing a walker's guide to the best times to plan your winter walks over to Burgh Island.

The guide will be available to be downloaded from the Bigbury Drums website. Weather updates and access information will also soon be posted by the barman on the Bigbury Drums Facebook page. Even when the tide is in, the trusty sea tractor to ferry visitors across. It is much easier than I thought to get over to the island. We know various events are being planned for the Pilchard Inn for us all over the next few months and into the summer. Keep an eye on Bigbury Drums. It is also open seven days a week - even now in the middle of winter!

A walk up to the top of the island to the Huer's Hut can be blustery and exhilarating in the winter. It is fascinating to muse about the real history of this building. It is often said to be a lookout tower to spot shoals of pilchards and arouse the fishermen with the huer's call. However, the Prideaux family of Kingsbridge say that they erected it in the early 20th century for use as a picnic hut when they sailed round from Salcombe. During the first and second world war, it was used as an observation post. The views up and down the coast are far-reaching and stormy winter seas make you aware of the bravery of sailors and fishermen. Crashing waves on the seaward side of the island resound along the cliffs where seagulls perch and cry into the wind. Leaving them behind, it's a quick walk back to the warmth of the Pilchard Inn and a pint by the fireside. The latch on the heavy wooden door clinks, as Duncan Gray, the co-owner of

the Burgh Island Hotel, enters. I have come to find out from Duncan what has been happening at Burgh Island Hotel this winter whilst the world-class Burgh Island Hotel has been closed for a major overhaul.

Less than a year ago, I had ventured over to Burgh Island to meet the new owners and find out who they were and learn about their vision for the future. Whilst it was certainly exciting to discover their plans to attract millionaires from all over the world, I was really more interested whether they wanted to forge new links with the local community. Of course, the answer to that direct question was bound to be positive. This could have been a platitude. But it wasn't. The Bigbury History Society was invited to the Ganges Restaurant at the hotel for a delightful luncheon and talk about the history of the hotel and the owners' plans going forward were revealed. Along with some sixty, local people, previous owners of the Hotel, Bee and Tony Porter, were there too, having not been back on the island for many years. They presented a Burgh Island flag to Duncan Gray and wished them well as they took on the challenges that running a hotel on an island can present. Not long after that, another 150 local residents joined forces with the island team to raise money for the local sea rescue services with a summer hog roast (a la John Tucker). The sun shone, the wine flowed, and the Burgh Island flag waved in the summer breeze. We raised £3,000 on that one occasion. This shows what

CONCEIT AND THE AVERAGE DOG

Vanity of vanities thy name is Rusty. Never did I think that one of the seven deadly sins, particularly this one, would strike me down. I have always considered myself a modest creature, born as I was in humble surroundings. (Actually I come from a village called Nasereth in North Wales (I am not making this up), but I have never allowed it to go to my head. Anyway, I digress.

I must admit that my ODA column in this organ has gone better than expected. I had no great expectations of fame or fortune. I'm content with my humble lot: nice basket near radiator, two meals a day, medical attention etc, so when I decided to share my views on cats and the world in general, I didn't think many would notice. Important as Bigbury seems to be, it's not exactly the world. (I know this to be true from a thing my master talks with in his car. Called a "satnav" it tells him to turn left or right, and he seems to be able to obey these instructions without having to be offered a gravy biscuit as a reward. Extraordinary really!) But to return to my theme: It was the internet that did it. The organ manager here, a M/s Wainwright suggested to me that I should take a page on Facebook. Like some Chauncleer (I need not explain I am sure), I borrowed my man's ipad (password "Rusty. ODA")and dispatched my details to a Mr Zuckerberg, whose name was in a newspaper in the bottom of my basket. Apparently he is the manager there. With some trepidation, I posted a thought or two, sticking to simple themes like the question of closing our borders, post Brexit, to any more unwanted cats. I mean enough is enough. Our hardworking vets are being swamped with hordes of these furry, feline, fourfooted...(not you, Monty of course).....friends.

I did not have to wait long for a response. Letter after letter arrived, all from female admirers full of flattering remarks: *"Most Darling Rusty you are so wise and handsome. I think about you all day long. I long to sniff you"...*(Need I go on? I am sure you catch the drift gentle reader) *"Will you be my Valentine"*. *"Sealed with a kiss"*. Well, not knowing who Valentine is and realising that none of these admirers left so much as a microchip number let alone more, so I was a little foxed, if you will pardon my expression. But I was too flattered to be suspicious. It was apparent to me that I was, as they say, "going viral", and sadly it went to my head. I made arrangements for a fur-cut and a mild tint with the well known canine coiffeurist, Jane Russell, and, according to my mistress was often seen preening in her mirror. Imagine my chagrin and embarrassment when I discovered that all the letters came from the same dog, and not only that, she lives in the same kitchen as me. Even now she is in her basket, sniggering at my embarrassment. Pride cometh before a fall. But I am a resilient kelpie and I will rebound and regain my wounded pride. But, other creatures be warned: the internet is a dangerous place for us dogs. Who knows, it may soon imperil our very freedoms.....

Yours as always **Rusty.**

we can achieve together. The Bigbury Burgh Bash could become an annual event. Since then many mainlanders have celebrated special occasions at the hotel and we have taken up the invitation to a charming afternoon tea party in the Grand Ballroom. Saving Warren Cottage in Bigbury - on Sea from the developers was a coup for the Burgh Island owners and we hear the plan is to reopen the Burgh View Cafe again for this summer - again so much happening...

Since last April not only has the local community remained a relevant consideration but local people have been employed to upgrade the art deco feel of this heritage asset. Duncan Gray the Hotel's, co-owner, gave the editor of Bigbury News an exclusive tour of the latest investment - a badly needed and extensive refurbishment of the Hotel which is being painstakingly achieved by a huge team of local craftsmen and builders working round the clock for the reopening on February 20th. The construction team, led by Plymouth - based, Dave Garland, under of course the watchful eye of Danny Jordan who we all see normally either driving the Sea Tractor or the green tractor on the beach are all Devon based. Duncan made it clear it is important their investment is felt by the local community in particular. The work will ensure the Art Deco genre for which Burgh is so famous is retained and enhanced, and excitingly for us all in our local area and further afield.

Duncan was able to reveal that the hotel will be opening a new restaurant in late March open to non-residents. We understand the menu will have a local fish based bias. It won't be cheap though - but looking at the work that is going into creating state of the art kitchens we are quite sure the offering will be another great asset for our community as a whole. Watch this space as there is much to follow over the next month or so as the opening gets closer.

Louise Wainwright



Our new **sub-Editor for Culture Club** is **Dilys Doughty**, who is waiting to hear from you, if you are a local Creative and would like us to promote your works.

'Creatives' include *artists, authors, poets, sculptors, dancers, photographers, ceramicists...*and anything else we have forgotten.

Contacts:
dilys.doughty@btinternet.com

BURGH ISLAND 2019 PRIVATE WINTER SPECIAL

Between January 3rd - February 20th take advantage of these never to be repeated room only rates. During the Burgh Island Hotel refurbishment you can still enjoy a memorable stay on the island in either our iconic Beach House or Artists Studio.



BEACH HOUSE

£250 for one night and £150 for any consecutive nights

Refurbished in December 2018, the Beach House is our premier suite that boasts a hot tub, beautiful interior and a cosy log burner. With two bedrooms, two bathrooms and a sofa bed, this iconic property can sleep up to six people. Known famously for being the house where Agatha Christie wrote some of her books. When you set foot inside it's understandable how it's extraordinary views alone provided Christie with her inspiration. Lunch and dinner are available separately at The Pilchard Inn.



ARTISTS STUDIO

£150 for one night and £120 for any consecutive nights

Beautifully cosy and located above the 13th century Pilchard Inn, the Artists Studio offers impressive views of the mainland, self catering facilities, and also benefits from the amazing environment of the pub just downstairs where lunch and supper can be served in front of a roaring fire. Dogs are welcome in both rooms.

IMPORTANT INFORMATION

Pilchard Inn opening hours: 11am - 9pm (reduced food offering of soup and baguettes only on Monday and Tuesdays)

Stays are self-catering, room services unavailable as hotel is closed due to active refurbishment work taking place. In the unlikely event you require urgent assistance the hotel reception will be open between 9am - 9pm. No guaranteed transport times.

Computer Problems?

Call

TGO

Web Services Ltd

**Locally Based, Quick Service,
Reasonable Rates**

We can help with:

- New/Replacement PC's and Peripherals • Laptops • PC repairs •
- Broadband Installation • Hardware Upgrades • Web Design •
- Virus Removal • Data recovery • Online Safety • Lessons •
- Laptop repairs • Computer Tune-ups • Wireless Help •
- PC Healthchecks • Network Troubleshooting •
- Authorised AVG Internet Security Reseller •

**Affordable and effective
computer repairs & support.
Fast, reliable Service.
Clear, helpful advice.**

Call Phil on 01548 810628 or
E-mail: phil@tgoweb.co.uk

Avon Mill

Garden Centre • Café • B&B
Art & Crafts • Boutique • Florist



Woodland walks • Dogs welcome
Independent shops • Plenty of parking
Breakfasts, lunches & 'Devon Cream Teas'

Loddiswell • Kingsbridge • Devon • TQ7 4DD
www.avonmill.com 01548 550338

ROSES ARE RED
SO IS MY
WINE
REFILL MY GLASS
AND I WILL BE JUST
FINE

Roses are red
Violets are blue
Love never crossed my mind
until the day I met you





**Moving Together
Devon Ltd**
Support in staying put or moving
home.

Advice
on moving options available for older people.

Support
by providing practical help for you to move


Help
for you to stay at home with equipment
and/or adaptations

**We offer a free consultation
visit anywhere in Devon.**

carole@movingtogetherdevon.co.uk
www.movingtogetherdevon.co.uk
01392 273067




PEBBLES
Est. Salcombe 2004
We take care of your home



For holiday homes, private second
homes and estates in Bigbury on Sea

Property management services

01548 843 680
pebblesofsalcombe.co.uk





An Ode to the Pub Cat

Shall I compare thee to a jungle cat
All claws and teeth and ruffled fur
Ferocious snarl instead of purr?
Or wouldst thou like a softer look
A kitten in a picture book?

We must decide on how we "seem"
To be the creatures of our dreams
Or accept conformity- and be
What our owners like to see?
Pets with often comic names
Players in their human games!

So dear Monty - I send you greetings
But not I fear, of New Year meetings
And if perhaps you think of that
Remember I'm not scared of cats
Although that's how I like to seem
Alas a figment of my dreams

As Shakespeare wrote: "Aye there's the rub"
The only pussy in the pub - in you I will in
truth confide
Forsooth i wouldn't go inside
And so, dear Monty in your bar
I send good wishes.....but
From afar!

A Happy New Year to all Bigbury Pets
The campaign begins anew!

Rusty ("Only Dogs Allowed")

NEW

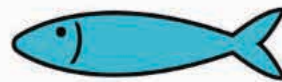
6 months
Full
Membership

1st Sept to 28th Feb

£250

Call 01548 810557 (opt 5)
For more details

BIGBURY GOLF



THE PILCHARD INN

Roaring fires and a hearty menu, The Pilchard Inn is the perfect
place to stay warm this winter.

Open daily 11am - 10.30pm. Access subject to tides.

WINTER MENU

Starters

- Seasonal Soup ~ £5.50
- Pirates Pilchards on toast ~ £5.50
- Cup of prawns with aioli ~ £7.00
- Pate and toasted bread ~ £6.00
- Deep fried mushrooms with garlic mayo ~ £5.00

Main Course

- Grilled Steak and chips with herb butter ~ £16.00
- Chicken curry, rice and poppadum, mango chutney ~ £14.00
- Seasonal stew with fresh artisan bread ~ £12.00
- Gammon, pineapple, egg and chips ~ £12.00
- Vegetable pie with mashed potato and peas ~ £11.50
- Fish, chips and mushy peas ~ £12.00

Desserts

- Ice cream bomb ~ £5.50
- Seasonal crumble with custard or ice cream ~ £5.50
- Treacle pudding with custard or ice cream ~ £5.50

**Organic and Vegan; Gluten, Wheat & dairy - free
Available from HOLYWELL STORES**



We are the South Hams leading installers of

- HEAT PUMPS
- SOLAR PANELS
- BIOMASS BOILERS
- LED LIGHTING
- CAR CHARGING POINTS
- UNDERFLOOR HEATING

We can help to reduce your energy bills

**New builds, renovations or simply upgrading we
do them all so give us a call : 01548 831890**

Providing renewable energy solutions that don't cost the earth

Come and see our working heat pump and solar panels in the office

Unit 10c New Mills Ind Est Modbury PL21 0TP

Contact us: info@econrguk.com



BIGBURY BIOBLOG

MUD, MUD, GLORIOUS MUD!!

Have you ever been up to your neck in that black, gluey and smelly mud which abounds in the upper reaches of the Avon Estuary and around the salt marsh areas - thinking you might never escape its clutches and, somehow, might have to call the Coastguard for rescue if only you could get your hands free of the stuff? If so, you might want to withdraw your curses and instead sing its praises, rather like the old Flanders and Swan song - "Mud, Mud, Glorious Mud" - because, with the recent renewed level of interest in global warming, that black goo has now been reinvented as 'Blue Carbon'.



According to the website at BlueCarbonPortal.org, 'Blue carbon' is the carbon stored and sequestered in coastal ecosystems such as mangrove forests, sea grass meadows or inter-tidal salt marshes. These valuable ecosystems hold vast carbon reservoirs; they sequester atmospheric CO₂ through primary production, and then deposit it in their sediments. In fact, most blue carbon is found in the soils or sediments beneath the vegetation.

The rates of carbon sequestration and storage are comparable to (and often higher than) the sequestration rates in carbon-rich terrestrial ecosystems such as tropical rainforests or peatlands. Unlike most terrestrial systems, which reach soil carbon equilibrium within decades, deposition of carbon dioxide in coastal ecosystem sediment can continue over millennia. However, when these coastal ecosystems are degraded or destroyed they can become carbon dioxide sources due to the oxidization of biomass and organic soil.

Because coastal ecosystems do contain substantial amounts of carbon, and because this carbon is in danger of being released, they are important in mitigating climate change. Unfortunately, however, the rate of loss of mangroves, seagrasses and salt-marshes (driven mostly by human activities) is estimated to be among the highest of any ecosystem on the planet, prompting international interest in managing them more effectively for their carbon benefits.

Although the Avon Estuary's contribution to carbon sequestration may be small

on a planetary scale, that contribution to conservation strengthens the argument for its designation by Natural England as one of the new Marine Conservation Zones and for the inclusion of the embryonic salt marsh at South Efford within its boundary - NE's decision is awaited as I write! Those anaerobic bugs thriving in the mud, locking up carbon, could be the saviours of our planet. Disturb them at your peril!!! GLORIOUS MUD indeed!

Stuart Watts
February 2018



SURF KAYAK SUP
 Bigbury on-Sea & Challoborough Bay

Lessons

- Beginner & Advanced
- Discounted Private Family
- Taster Session 1 Hour
- Supervised Practice
- Special Needs
- Surf Club
- Stand Up Paddle
- Surf Camp
- All equipment is provided

Hire

- Surfboards & Wetsuits
- Stand Up Paddle Boards
- Single & Double Kayaks
- And Beach Shop Sales

★ Guaranteed ★
We'll get you standing up and riding in your first lesson.

07813 639 622 • www.discoverysurf.com • martin@discoverysurf.com

VALUATION WEEK

Stags are back in Bigbury on Sea again in February for one of their 'Valuation weeks'.

For the whole of the week commencing Monday 11th of February, they are offering free market appraisals, whether you are thinking of selling or not.

Associate Partner **Christopher Kivell** said "It's something we have done for a while now, focusing on different villages across the area throughout the year. We live in uncertain times and for homeowners, it's just a way to get an up-to-date valuation, totally in confidence without any charge or obligation".

"We really enjoy the Village Valuation weeks not least because it gives us the opportunity to spend longer in them and perhaps on a somewhat "less formal" basis." Christopher went on to say that "Stags are doing similar Valuation weeks in nearby Kingston and Ringmore in April"

To book your appraisal, contact Stags in Kingsbridge on 01548 853131 or e-mail kingsbridge@stags.co.uk



Valuation Week | Bigbury and Bigbury-on-Sea

Monday 11 - Friday 15 February

If you would like a free, no-obligation, up to date market appraisal of your home, please contact us on **01548 853131** or kingsbridge@stags.co.uk



01548 852323

High Union Road,
Kingsbridge, TQ7 1EQ.



www.quayautocentre.co.uk

Suzuki Main Dealer & Ford Authorised Repairer

LOOKING FOR A NEW CAR?

Exciting, affordable,
reliable and local
BOOK A TEST-DRIVE

BIGBURY THANK YOU
to Eamonn and Linda
Byrnes - our new
Bigbury Watch Keepers.



SUZUKI

West Country Stoves

Contemporary & Traditional
Wood, Multi Fuel, Pellet & Gas Stoves



- Advice
- Free Site Visits
- Installation
- Annual Servicing
- Chimney Sweeping

t: 01548 550400

www.westcountrystoves.co.uk

BIGBURY WATCH

Allow me to introduce a local couple from Bigbury on Sea, who have volunteered to be our Bigbury Watch Keepers - **Eamonn and Linda Byrnes**. They will be a local point of contact for us and help to direct us to the right professional services in a range of situations. They will not replace the local police but will of course be in regular contact with the Kingsbridge Team.

If you have any concerns about unusual vehicles, telephone calls, emails, cold callers, odd behaviour etc. - don't be afraid to call our Bigbury Watch Keepers and ask their advice about whether it should be reported. Contacts: 01548 811104 or 07790 485102

Introduction

Eamonn & Linda Byrnes were both serving police officers at Notting Hill police station when they met in 1981. Linda retired in 1985 to raise their family (3 children) with Eamonn leaving the Metropolitan Police in 1989. As a result of Eamonn joining a local



LOCAL POLICE CONTACTS

Police Community Support officer (PCSO) 30383 Paul O'Dwyer who is responsible for liaising with local communities. .

Fore-warned is fore-armed. **Devon & Cornwall Police** have a set up a **web-based Alert system**. It's easy to sign up for Alerts on your mobile phone or by email on topics of relevance to you - so you fine tune your own alerts. Click on this website:

<https://alerts.dc.police.uk/>

Our local Beat Team consists of the **Beat Manager PC 6486 Ryan Hayhurst** and **Police Community Support Officer 30080 Warren Palmer**. They can be contacted via the Kingsbridge email page

kingsbridge@dc.police.uk

**Bigbury
Heating & Plumbing**

**01548 810313
07737 328495**

24 hour callout
Oil - LPG - Gas

security services company based in Kingsbridge, they relocated to East Allington in December 1992. They have remained living in the Kingsbridge area since that time with spells in Thurlestone, and latterly Torcross before moving to Bigbury on Sea in 2016.

After leaving the police services in the late 80's Eamonn pursued a career in sales whilst Linda juggled raising 3 young children as well as always having a part time job in sales! She had a variety of jobs from working for most new house builders in the area to being the local rep for Cadburys !

After heart surgery in April 2014 Eamonn decided that his time travelling the country as a sales director were at an end, at which time they decided to move across from Torcross to Bigbury on Sea where they have settled . Eamonn is an enthusiastic golfer playing at Bigbury and they both enjoy using the causeway pool and facilities and can often be found on the beach with their 2 small dogs and their 5 grandchildren who are regular visitors.

Eamonn & Linda Byrnes (above)



For emergencies call 999.
For non-emergencies
report online
(www.dc.police.uk/reportcrime),
email (101@dc.police.uk) or call 101.

Sailing ahead.

For customers who expect more from their estate agent.



SOUTH HAMS'
LEADING
ESTATE AGENT

Marchand Petit

ESTATE AGENTS

marchandpetit.co.uk

DARTMOUTH	KINGSBRIDGE	MODBURY	NEWTON FERRERS	SALCOMBE	TOTNES	LETTINGS	PRIME WATERFRONT & COUNTRY HOUSE
01803 839190	01548 857588	01548 831163	01752 873311	01548 844473	01803 847979	01548 855599	01548 855590

PRIME



DESIGN

Commercial, Retail & Residential
ARCHITECTURAL DESIGN
& INTERIOR DESIGN

Plans & Elevations Drawn
Planning Applications
Building Regulations
Check Building Surveys
Free Advice

Contact: **Simon Bronstein**
Tel: 01548 810005
Mbl: 07710 657387
2, Pickwick Cottage, St Anns Chapel

Rest Assured Properties

Do you have a holiday home in Bigbury?
Rest Assured Properties are looking for more rental properties to satisfy the high demand. We promise a low commission rate so you can sit back and earn a great income.

Call Patsy on **01752 830409** or **07722294060** or email **restassured@hotmail.co.uk**

Flexible, Friendly & Affordable



Multi Award Winning Swimming Pool Installers

www.deependpools.co.uk



Exeter, Devon
8 Trusham Road,
Marsh Barton, Exeter EX2 8QH
email: info@deependpools.co.uk
tel: 01392 247466



THE PUB CAT SPEAKS

Xnnián kuàilè – Pussypots!

Happy Mew Year, Pussypots! My friend Bruce, a very fine Persian Blue, bought me a lovely present for Pussmass. A gorgeous three piece suit in blue stripey fabric – so summery, with a lovely waistcoat and a special little pocket for my ‘Tracker’ fob watch. I feel it’s summer already, darlings.

And a very special Happy Mew Year to Rusty, the confused canine. Bruce and I found Rusty’s poem in the last Bigbury News very amewsing! We cannot imagine a simple-minded pooch ever picking up a cat in its mouth. What most dogs would do is give the poor creature an entirely unwanted sniffing, before running around in circles, and barking for ten minutes. It was a lovely thought though, Rusty!

I do hope you were watching Sky Mews when that charming policeman knocked on the door of 10 Downing Street so that Larry the Cat could be allowed in to join our Prime Minister, Teezer Maybot, who was on her own, toasting her toes by the fire with a glass of sherry but without the company of her beloved mouser. Well done Pawfficer Tibbles for taking the initiative! It just goes to show the truly superior status of cats.

This is an exciting time for cats – we are nearing the Chinese New Year of the Tiger – tiger is the collective term for all felines! Yes, in 2022 the great day will arrive, and I am sure there will be a special celebration on Purrr Island!

In Chinese culture, cats and tigers are seen as the guardians of children. Infants and babies wear shoes and hats with tiger designs

to protect against evil spirits. The Tiger is also associated with the Earthly Branch (**—dì zh*) yín (*) and the hours 3.00–5.00 in the morning – the hours when, as you all know - cats like to be at large in their territories, warding off warlocks and witches, and protecting children and dogs! In the terms of yin and yang (**— y*n yáng), the cat is yang – the bright and the positive force in the world, symbolised by the rays of the sun showering the earth with light.

In 2022 the element of water will be most significant in the Year of the Tiger – isn't it wonderful that we will be by the sea at this time?! This means that if we cats and humans work hard, our lives will be full of fortune! So much to look forward to.

Oh, I nearly forgot! I expect you have all started your New Year's resolutions? Here at The Artful Dodger Inn, Nancy and Fagin have promised to say 'I love you!' to each other every day. Isn't that purrrfect?!

My New Year's Resolution?
To teach Rusty, the old dog, a new trick! Hah, ha!

My other resolution?
To pamper myself a bit more.....
...which is the same as last year's!

Happy New Year - ****X*nnián
kuàilè – pussypots!

Monty

We Let Our Clients Do The Talking...

"You have been brilliant through the whole process"

"Just to thank you for your enduring patience in the sale of our house" *"We were so impressed with the photography, marketing and honesty of your team"*

"Modbury, have been fantastic, very patient and understanding, helpful and professional"

"Thank you for your work and patience"

3 Church Street
Modbury
PL21 0WD
01548 830831
modbury@luscombemaye.com

Luscombe Maye 
Waterside Property


BIGBURY DRUMS
FOR THE COMMUNITY BY THE COMMUNITY

Subscribe to our weekly, emailed digest of EVENTS by sending your email contacts to:

bigburydrums@gmail.com

Events, places to eat, places to stay, things to do and a new local BUSINESS DIRECTORY are all listed on our **BIGBURY DRUMS website.**

<https://bigburydrums.wixsite.com/bigburydrums>

To promote events and place advertisements on Bigbury Drums website or in Bigbury News please contact:

bigburynewsads@gmail.com

A RECENT COMMUNITY SURVEY HIGHLIGHTED THAT THE MAJORITY OF PEOPLE IN BIGBURY VALUE THE CHURCH OF ST LAWRENCE.

WOULD YOU LIKE TO HEAR BIGBURY CHURCH BELLS RING AGAIN?

HAVE YOU GOT ANY IDEAS ABOUT HOW TO RAISE THE HUNDREDS of THOUSANDS of POUNDS NEEDED?

WHAT IS ALREADY BEING DONE and WHAT PROGRESS HAS BEEN MADE?



Photo credit: Alice Taylor

Experts in waterside living
for over 150 years.



More than you're looking for.

Savills South Hams
01548 800462
sjchick@savills.com

savills.co.uk



Please get in touch for the March issue of Bigbury News through the POST BAG and share your support and ideas for those who are valiantly working to save this treasured asset.

bigburynewseditor@gmail.com

CPMR & CHENPUMP UK Ltd

PUMP & WATER ENGINEERING SPECIALISTS

Boreholes, Drilling & Dowsing,
Wells & Private Water Supplies,
Sewage & Waste Water

PH, UV, Iron Water Treatment
& Filters

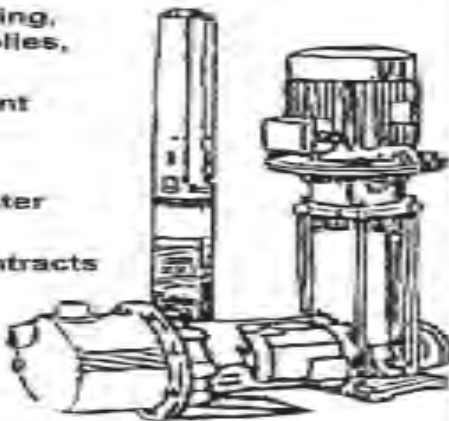
Pipes, Spares & Fitting

Pressure Boosting, Rainwater
Harvesting

Service & Maintenance Contracts

Sales, Service & Repairs

Site & Full Workshop
Service



Tel: 01752 695 688

Email: plymouthservice@cpmr.co.uk

Emergency Callout Service: 07426 027 372

A family company providing a professional service
Covering all of Devon and Cornwall Inc the moors

JBS

John Butler Stonework

Quality Stonework

Building & General Maintenance

Free Estimates

Efficient Service

Based in the South Hams

John Butler Services

Plumbing Maintenance and Repairs

Boiler Services and Repairs

Gas, LPG and Oil

Caravans & Holiday Home Safety Checks

Gas Safe Registered

Emergency Call Outs

Tel: 01548 810462

or 07977 962091

LASTING POWER OF ATTORNEY *are you prepared*

Lasting Powers of Attorney enable you to nominate someone NOW who you trust to make important decisions on your behalf if and when you can not in the future.

For peace of mind, our qualified Social Workers help you record your choices about your Property, Finances, Health & Care as well as help you set up a Living Will for others to follow if you lose mental capacity.

We simplify the application, witness, signatory and registration processes at a fraction of the price most solicitors charge.

*Give us a call for a
no obligation chat*

07594 56 00 11

www.personalisedsocialcare.co.uk



Personalised
Social Care Solutions

WHK Services

Devon Ltd



Complete Property Management & Professional Cleaning

Unit 7

Admiral Court

Nelson Road

Dartmouth

Devon

TQ6 9HU

Tel: 01803 839683

www.whkservices.com

ACE IRONWORKS



Railings ~ Gates ~ Handrails
Spiral Staircases ~ Security Grilles

Balconies ~ Fire Escapes ~ Balustrading
General Steel Fabrication

Galvanizing And Powder
Coating Available

Tel:- 01752 670713

2 Miller Court - Millbay Road - Plymouth - PL1 3LQ

e: aceironworksltd@gmail.com

Top Quality Products And Service In The South Hams And Plymouth Area

LOYALTY BONUS

for existing black & white advertisers.

CONTACT

Marina Leadbetter to learn about discounts to convert to a colour advert.

bigburynewsads@gmail.com

Colour advertisers will ALSO be featured on our website BUSINESS DIRECTORY and be able to link their social media to our social media.

Fibre Fresh CARPET CLEANING



Carpets
Upholstery

Rugs

Stains & Odours
Removed

End of Tenancy
Low-Cost &
Quick Drying

Local Professional Company

www.Fibre-Fresh.co.uk

01548 550906

NCCA[®] Member

SUNDAY	31	3	10	17	24
	<i>Mother's Day</i> <i>British Summer Time</i>	St Lawrence Service 11.00 am Sunday Worship	St Lawrence Service 11.00 am Communion	St Lawrence Service 11.00 am Communion <i>St Patrick's Day</i>	St Lawrence Service 11.00 am Communion
MONDAY	MAR 2019	BLACK bins 4 Fit-2-Go MH AEROBICS 9.30 - 10.10 am PILATES 10.15 - 11.15 am STRONG & STEADY 11.20 - Noon + tea	BROWN bins 11 Fit-2-Go MH AEROBICS 9.30 - 10.10 am PILATES 10.15 - 11.15 am STRONG & STEADY 11.20 - Noon + tea	BLACK bins 18 Fit-2-Go MH AEROBICS 9.30 - 10.10 am PILATES 10.15 - 11.15 am STRONG & STEADY 11.20 - Noon + tea	BROWN bins 25 Fit-2-Go MH AEROBICS 9.30 - 10.10 am PILATES 10.15 - 11.15 am STRONG & STEADY 11.20 - Noon + tea
TUESDAY		<i>Shrove Tuesday</i> 5 YOUTH CLUB 17.30 -19.30 MH	12	19	26
WEDNESDAY		<i>Ash Wednesday</i> 6 YOUTH CLUB 17.30 -19.30 MH	13	20	27
THURSDAY	Key: MH = Memorial Hall St Anns Chapel <div> BIGBURY NEWS accepts no responsibility for errors in the calendar. Check with organisers about tickets & times. </div>	7 Fit-2-Go MH PILATES 9.15 - 10.15 am BONES BONUS 10.15 - 10.30 am	14 Fit-2-Go MH PILATES 9.15 - 10.15 am BONES BONUS 10.15 - 10.30 am	21 Fit-2-Go MH PILATES 9.15 - 10.15 am BONES BONUS 10.15 - 10.30 am	28 Fit-2-Go MH PILATES 9.15 - 10.15 am BONES BONUS 10.15 - 10.30 am
FRIDAY	<i>St David's Day</i> 1	8	15	22	29
SATURDAY	2	9	16	23	30

WHAT'S ON NEARBY?

AVETON GIFFORD

5th March 7 pm
LIVE JAZZ

HOT FINGERS with
EMILY CAMPBELL

MODBURY

Thurs 7th March
Devon Rural Archive
Killerton Bygones
7 - 9.30 pm

RINGMORE

Sat 16th March
Ringmore Quiz
7.30 - 10.00 pm

MARLBOROUGH

Amateur Dramatics
GUYS & DOLLS
26th - 30th March

See posters on
Bigbury Drums
for details



HAVE YOU BOOKED

A TABLE at any of
our great local pubs
or
restaurants on

MOTHER'S DAY

(31st March)

See adverts in
Bigbury News for
telephone numbers.

Burgh Island Hotel
should also have
reopened by Mother's
Day!



LOCAL RESIDENTS SMALL ADS

If you would like to offer something for sale - please send a maximum of 20 words description, tel number and name to The Editor

Tefal 1000 Deep Fat Fryer,
rarely used. £10?
Fiona
01548 811188
07778 263827

SOUTH HAMS ELECTRICAL SUPPLIES

- SATELLITE & TV SERVICES
- Freeview Digital TV • Freesat HD
- Aerial Installations • Data/Telephone
- Aerial Repairs

Tel: (01548) 559001
Mobile: 07773 325316

Springfield, Loddiswell, Nr Kingsbridge. TQ7 4EL
Email: colinjarvis.cj12@outlook.com

CHAPMAN
electrical



Domestic & Commercial
Electrical Contractors
Over 20 years serving Bigbury
and the surrounding area
Fully NICEIC approved contractor

Tel: (01752) 896183
Mob: 07971 855852
Or email:
enquiries@chapmanelectrical.biz



DOWNLOAD the **BIGBURY BUSINESS DIRECTORY**
<https://bigburydrums.wixsite.com/bigburydrums>

MOTHERS DAY
(31st March)

Burgh Island Hotel
should have
re-opened by
Mother's Day.

THE SALON
Hairdressing for men
and women
Manicure & Pedicure
43 Fore Street
Kingsbridge
Tel: 01548 852128

Julie
Fully Qualified
Mobile Hair-stylist
Ladies & Gents
Competitive Prices
Answer phone Service
01548 810634

CHAPMAN CONTRACTORS LTD
SEASONED LOGS
sold by dumpy bag, netted or bulk deliveries
NETTED KINDLING AVAILABLE
HOUSE COAL AND SMOKELESS NUGGETS

- TREE AND HEDGE CARE • LAWN MOWING
- FENCING AND GARDEN WORK
- FULLY INSURED • 17 YEARS EXPERIENCE

TIMBER PROCESSOR, CHIPPER AND
KINDLING MACHINE FOR HIRE ON OR OFF SITE

CONTACT NEIL CHAPMAN
01548 810016/07718 722680

Please contact Marina Leadbetter
for discounts to convert to a colour
advertisement.

bigburynewsads@gmail.com

Colour advertisers will ALSO be
featured on our website **BUSINESS**
DIRECTORY and be able to link their
social media to our social media.

AYRES HAYNES
ARCHITECTS

RIBA

Chartered Practice

tel 01752 408051
email admin@ayreshaynes.com
web www.ayreshaynes.com

Top Floor Unit 2 Western Hangar, Lawrence Road, Mount Batten, Plymouth, PL9 9SJ

BEACH BANTER

BURGH ISLAND 2019 PRIVATE WINTER SPECIAL

Between January 3rd - February 20th take advantage of these never to be repeated room only rates. During the Burgh Island Hotel refurbishment you can still enjoy a memorable stay on the island in either our Iconic Beach House or Artists Studio.



BEACH HOUSE

£250 for one night and £150 for any consecutive nights

Refurbished in December 2018, the Beach House is our premier suite that boasts a hot tub, beautiful interior and a cosy log burner. With two bedrooms, two bathrooms and a sofa bed, this iconic property can sleep up to six people. Known famously for being the house where Agatha Christie wrote some of her books. When you set foot inside it's understandable how it's extraordinary views alone provided Christie with her inspiration. Lunch and dinner are available separately at The Pilchard Inn.



ARTISTS STUDIO

£150 for one night and £120 for any consecutive nights

Beautifully cosy and located above the 13th century Pilchard Inn, the Artists Studio offers impressive views of the mainland, self catering facilities, and also benefits from the amazing environment of the pub just downstairs where lunch and supper can be served in front of a roaring fire. Dogs are welcome in both rooms.

IMPORTANT INFORMATION

Pilchard Inn opening hours: 11am - 9pm (reduced food offering of soup and baguettes only on Monday and Tuesdays)

Stays are self-catering, room services unavailable as hotel is closed due to active refurbishment work taking place. In the unlikely event you require urgent assistance the hotel reception will be open between 9am - 9pm. No guaranteed transport times.

VENUS
WINTER OPENING
HOURS
EVERY DAY
10 AM to 5 PM





DISCOVERY
SURF SCHOOL

SURF KAYAK SUP

Bighury on-Sea & Challaborough Bay

Lessons

- * Beginner & Advanced
- * Discounted Private Family
- * Taster Session 1 Hour
- * Supervised Practice
- * Special Needs
- * Surf Club
- * Stand Up Paddle
- * Surf Camp
- * All equipment is provided

Hire

- * Surfboards & Wetsuits
- * Stand Up Paddle Boards
- * Single & Double Kayaks
- * And Beach Shop Sales

★ Guaranteed ★

We'll get you standing up and riding in your first lesson.






07813 639 622 • www.discoverysurf.com • martin@discoverysurf.com




BEACH BANTER

25% OFF FOR LOCALS

PLEASE BRING ID SHOWING HOME ADDRESS

AVAILABLE AT BLACKPOOL SANDS,
BIGBURY ON SEA & WATERGATE BAY

OFFER VALID FROM 7TH JANUARY
TO THE END OF MARCH 2019

Est. 1958

VENUS

loving the beach™

BEAUTIFUL LOCAL FOOD

www.lovingthebeach.co.uk



THE PILCHARD INN



Roaring fires and a hearty menu, The Pilchard Inn is the perfect place to stay warm this winter.

Open daily 11am – 10.30pm. Access subject to tides.

SUB EDITOR for BEACH BANTER

Beach Banter brings together news and views from the island, beach, sea, and riverside. Do you live in **Bigbury on Sea** and like taking photographs of what is happening down there? You would be ideally placed to be the roving reporter and send me the information needed. Perhaps it could be a group of friends who do this for Bigbury News? What Fun!

Beach Banter needs about five photos per month with no more than 150 words to go with each photo. You would need to talk to the sponsors, **Venus, Burgh Island and Discovery**, each month to check if they want any news items posted. Otherwise, just keep your eyes and ears open and give people a flavour of what is happening out there! Hope to hear from you!

WINTER MENU

Starters

- Seasonal Soup ~ £5.50
- Pirates Pilchards on toast ~ £5.50
- Cup of prawns with aioli ~ £7.00
- Pate and toasted bread ~ £6.00
- Deep fried mushrooms with garlic mayo ~ £5.00

Main Course

- Grilled Steak and chips with herb butter ~ £16.00
- Chicken curry, rice and poppadum, mango chutney ~ £14.00
- Seasonal stew with fresh artisan bread ~ £12.00
- Gammon, pineapple, egg and chips ~ £12.00
- Vegetable pie with mashed potato and peas ~ £11.50
- Fish, chips and mushy peas ~ £12.00

Desserts

- Ice cream bomb ~ £5.50
- Seasonal crumble with custard or ice cream ~ £5.50
- Treacle pudding with custard or ice cream ~ £5.50

KINGSBRIDGE FUNERAL DIRECTORS

(Adrian Mundy & Joan Johns)

The only Independent Family Funeral Directors in Kingsbridge.

*We provide a complete personal 24 hour service for
Kingsbridge, Salcombe and the South Hams.*

Approved Members of the N.F.F.D.

ADRIAN MUNDY MONUMENTAL MASON

For All Your Complete Memorial Requirements

KINGSBRIDGE 01548 856340

Devon Square View, Lower Union Road,
Kingsbridge, TQ7 1EF

www.kingsbridgefuneraldirectors.com

Ged
King
Plans

Ged King Plans Ltd

Architectural Design & Building Consultant

For peace of mind with your building project

07805-589240 / 01752-408792

info@gedkingplans.co.uk

Planning and Building Regulation drawings

new dwellings • barn conversions • home extensions

• loft conversions • commercial designs

COUNTRY HILL ANIMAL SHELTER

REGISTERED NO. 1114853

Tel: 01548 288001

www.countryhillanimalshelter.co.uk

HOUSE CLEARANCE AND
FURNITURE REMOVALS

We can help with:

- Collections of any furniture items which you would like to donate to our charity for resale
- Collections of any unwanted large items which cannot be resold and need to go to the skip
- Help with your removal of furniture if you are moving house

For any furniture removals please help us keep busy our Ford Transit Van, please call us on

01548 288001 today!

**KINGSBRIDGE
EYE CARE GROUP**

L, The Promenade, Kingsbridge.

Tel: 01548 856854

Clinical Excellence

Full Eye Health Examinations
Contact Lens Specialists
Retinal Photography & Macula
Pigment Density Scan
Glaucoma Examinations
OCT Eye Scanning Examination

Luxury Designer Brands

Nigel Frost Optometrist
3, Chene Court
Modbury
01548 830944

Salcombe Eye Care
84, Fore Street
Salcombe
01548 843207

www.kingsbridgeeyecare.co.uk

BIGBURY PAINTERS and DECORATORS

Provides a residential and commercial
service from house painting to commercial
decorating. Interior or exterior.
Trustworthy, local and reliable service.
Reasonable rates.

Contact - ROY or ALVIN

07591 656366 / 01548 831686

Email -

royparnell@hotmail.co.uk



painting and decorating

BIGBURY ON SEA PROPERTY SERVICES

Tel: 01548 811137

Email: bigburypropertyservices@gmail.com

Local Trustworthy couple offering a first class
Management / Maintenance Service.

Services Offered:

Changeovers and laundry - Key Holding / Property checks
Deep Clean - Window Cleaning - Garden Services

We also offer:

Complete property maintenance from decorating to a new bathroom.



BIGBURY BAKERS

No-one can have failed to clock that **John Tucker's** cauliflowers are in full 'bloom'. Whilst the flowers will not go down too well in a Valentine's bouquet, they make a great base for a winter warmer soup!

Here are some ideas about fun things to do with cauliflowers which I have put together from the internet whilst the real chefs are catching their breath after the Christmas rush! You will get the professionals back on the case in the March issue. If anyone else also has some favourite recipes using local produce - you are welcome to send them into Bigbury News. We may produce a **Bigbury Bakers booklet** in the future with all your contributions.

CAULIFLOWER RICE

Pulse cauliflower florets 2 cups at a time in a food processor until chopped into rice-size pieces.

Heat oil in a large skillet over medium-high heat. Add garlic (to taste) and cook until fragrant, about 30 seconds. Add the cauliflower rice, sprinkle with salt and cook, stirring, until softened, 3 to 5 minutes.



John Tucker's cauliflower harvest in full swing.

ROASTED CAULIFLOWER

Heat oven to 200C/180C fan/gas 6. Place the cauliflower, garlic and bay leaves in a large bowl, toss with the oil, zest and juice and season generously. Spread evenly onto a baking sheet (use 2 if you need to). Roast for 20 mins, turning halfway, until al dente and caramelised.

Better check the Internet for quantities of ingredients!

CAULIFLOWER SOUP

Heat a little oil in a deep, heavy-based pan over a medium heat. Add chopped onion and garlic to taste and fry for 2-3 minutes, or until just softened. Add a little ground cumin and ground coriander and fry for a further 1-2 minutes, or until fragrant. Add chopped cauliflower and chicken stock.

Louise Wainwright

NINETEENTH HOLE

As you all appreciate, the weather for the early part of 2019 has been mixed. However, the four 2019 Captains were blessed with a dry, albeit very cold, day for their 2019 Drive In. A lot of fun was enjoyed on the first tee, with tricky embellishments for their first drive.

"Driving in" were **Rob Luckens**, the Men's Captain. Rob has been a stalwart Bigbury member for many years, and was also a Board Member for several years. Rob has nominated the Triangle Outreach Drop in Cancer Support Centre Kingsbridge as his Charity.

Jane Wain, the Ladies Captain. Again, Jane has also been a member for several years, and has been a member of the Ladies Section Committee. Jane is also a qualified England Golf Rules Referee, and has contributed very useful Rules sessions over the recent years. Jane has nominated Macmillan Cancer Support as her Charity, which links well with the Kingsbridge Triangle Centre.

Dave Bogue, Seniors Captain. Dave is also a long standing member of the Club and has contributed to the Club in many ways. He is following in the footsteps of his son, **James Bogue**, who was the Juniors Captain in 1999. Dave has nominated Devon Air Ambulance as his main Charity, but says that the Seniors will also

contribute to both Rob and Jane's Charities, as well as the NSPCC. The Bigbury Seniors have supported the Devon Air Ambulance over many years.

Jessica Leach, Juniors Captain. Jess was appointed the Juniors Captain for a two year period, and 2019 is her second year. Jess says she has many ambitions, but one is for the Junior's to have fun during the year. Jess is a member of the Devon County Juniors Squad and all at Bigbury are very proud of her.

All the Captains confirmed they are looking forward to their year and have ambitions to continue working together and to contribute to the Club's ongoing success.

Bigbury members were out in force for the Drive In, welcoming the new Captains and wishing them all good luck and a most successful year. The Clubhouse and first tee were packed and, as well as enjoying the day, more than £130 was raised to kick-start the Charities fund raising, as well as a contribution to be made to the Bigbury Course Development Fund.

The drive in was followed by an 11 hole pairs competition, with a shot gun start. Fifty six players took to the course, who all appreciated that the weather had improved and it was not so bitterly cold.

There were excellent scores over the 11 holes, and in first place with 29 points were **Matt Smallridge** (11) and **Hamish Maclachlan** (17). Just one shot behind with 28 were the **Wain brothers**, **David** (10) and **Nigel** (22); in third place with 27 points were **Tony Messenger** (19) and **Keith Naylor** (10).

All in all this was a super day at the Club, alongside some good golf, and a great start to 2019.

Finally, one date for **Bigbury Golf Club - a quiz and meal night** is to be held on **Friday 15th February**, tickets available from the Club £11, 6.30pm for 7.00pm. Everyone welcome.

Marlene Johnson



Bigbury Golf Club Captains 2019

Bring your sewing requirements to

Rose

01548
810815




Custom Interiors and Covers

**Boat Interiors
Cockpit Cushions & Covers
Antique Furniture
Three Piece Suites
Auto Upholstery**

Steve Newton
Unit 6, Erme Bridge
Ivybridge, Devon PL21 9DU

☎ 01752 893139
☎ 07749 454039
✉ info@custom-interiors-covers.co.uk

www.custom-interiors-covers.co.uk



MARTIN LEY

PLUMBING & HEATING

GENERAL REPAIRS & NEW INSTALLATIONS




Modbury
Tel: 01548 830609
Mobile 07811 934551

T. S. BOOKKEEPING

Professional and private bookkeeping service
Income/expenditure recording
Bank account reconciliation, prepared to trial balance
Household and Business accounts undertaken

For a no obligation discussion please contact:
Trudy on 07788 596527/01548 810185
or email: tsbookkeeping@btinternet.com




RECRUITMENT OPEN DAY

Creating Amazing Memories

"Come & work with us... we Create Amazing Memories!"

Challaborough Bay Holiday Park

We look forward to meeting you

Waterfront Bar
Sat 2nd Feb 10am-3pm

Pop down to the Waterfront Bar at Challaborough Bay Holiday Park (TQ7 4HU) and find out about the exciting opportunities we have for 2019!

visit www.parkdean-resorts.com for more opportunities

Please bring along your CV and proof of eligibility to work in the uk

@PDResortsjobs
/ParkdeanResortsCareers



BIGBURY NEIGHBOURHOOD PLAN THE PRE-SUBMISSION CONSULTATION VERSION

THIS PUBLICATION IS NOW AVAILABLE FOR INSPECTION AND/OR DOWNLOADING ON THE BIGBURY COMMUNITY WEBSITE:
www.bigburycommunity.co.uk/groups/neighbourhood-plan/documents/

CONSULTATION EVENTS...

WE ARE ALSO HOLDING TWO CONSULTATION EVENTS IN THE MEMORIAL HALL AT THE FOLLOWING TIMES:
WEDNESDAY, 30 JANUARY BETWEEN 7PM AND 8.30PM
SATURDAY, 2 FEBRUARY BETWEEN 10AM AND 12NOON

A PAPER COPY OF THE NEIGHBOURHOOD PLAN CAN BE VIEWED AT THE HOLYWELL STORES AND COPIES ARE ALSO HELD BY THE FOLLOWING MEMBERS OF THE STEERING GROUP:
CLLR VALERIE SCOTT (BIGBURY VILLAGE) 01548 810336 | CLLR BETH HUNTLEY (BIGBURY ON SEA) 01548 810385
CLLR BRYAN CARSON (EASTON) 01548 810296

A LEAFLET PROVIDING FURTHER INFORMATION ABOUT THIS CONSULTATION IS AVAILABLE IN THE HOLYWELL STORES AND ON THE WEBSITE. THERE IS A COMMENTS FORM ATTACHED.

BIGBURY PARISH COUNCIL - minutes of meeting 9th Jan 2019 at Memorial Hall, St Ann's Chapel

Present: Cllr **Bryan Carson** - Chair
BC; Cllr **Sharon Smith** SS, Cllr **Beth Huntley** BH, Cllr **Cathy Case** (arrived 7.40) CC; Cllr **Valerie Scott** (arrived 8.00) VS Cllr **George Rosevear** – Vice chair
GR Acting Clerk: Cllr George Rosevear
18 Members of the Public present.
DCC Cllr **Rufus Gilbert** RG

Note: Cllr **Hannah Getley** [HG] has resigned from the Council and her resignation letter is on file.

Chairman Bryan welcomed everyone, noting that our Clerk Richard Matthews was on holiday, as well as the fact that there will be both **Parish elections on 2nd May 2019** and expressed a hope that residents other than sitting councillors would put themselves forward to serve the new Council. Also, there would be elections for the South Hams District Council on the same day.

1 /DECLARATIONS OF INTEREST
The chairman BC declared an interest in matters related to application 3681/18/FUL, but this had already been resolved and the Parish response lodged with SHDC. No other Councillors declared an interest at this juncture, but declarations could have been taken during the course of the meeting.

2 /APOLOGIES – None

3 /APPROVAL OF THE MINUTES OF THE PREVIOUS MEETING – 14th NOVEMBER 2018
The minutes having been previously circulated were taken as read. Proposed GR, seconded by SS and approved unanimously for the Chairman to sign.

4 /MATTERS ARISING
Several matters were raised, as follows:
Minute 4b: the **VAS speed monitoring** had taken place on 8th October 2018 and the mean speeds were North 27.6 and South 28.6 and there had been no recorded incidents in the last five years.
Minute 4d: the **DAA opening ceremony** was pending rather than postponed. BC commented that a joint opening ceremony with Ringmore might be possible.
Minute 6: following resident A's enquiry, BT had responded to the Clerk that they would be **refurbishing their phones boxes** in the spring of 2019.
Minute 6: following resident B's concerns, action had been taken to ensure that any site traffic would use the **site entrance** itself and **not the short cut over the Holywell Stores Right of Way**.
Minute 6 following resident F's concerns about the **dissemination of information** within the Community, it was noted that there would be a formal **Communications**

Coordination Committee during March 2019, date to be advised.

Minute 11: It was reported that the **damage** raised previously on the **playpark** had now been **repaired**.

5 /DEVON COUNTY COUNCILLORS REPORT – RG

Although RG joined the meeting part way through, his comments are placed in the order of the Agenda. RG reported as follows:

- (i) He noted the **SCARF results** (VAS reported under matters arising 4b).
- (ii) He confirmed that all DCC **grit bins** either had been or would be filled shortly.
- (iii) The **permanent deviation of footpath 4**. Noted that this was generally supported.

SHDC REPORT In the absence of a sitting District Councillor RG gave the following report:

- (i) It was noted that **HG had resigned** from the council and **sold her shop on the beach** front of Bigbury on Sea. Therefore SHDC had agreed with Mike Smith of Venus they can hold cash to dispense for car parking and toilet purposes, resurrecting a practice they previously engaged in up until about two years ago.
- (ii) There will be no **charge for the toilets** per se the charge will be **integrated into the Car Park charge** itself, which what had been negotiated by BH when a DC.
- (iii) The **beach shower unit** has not, as such been closed. Simply, the **water has been turned-off**. The annual cost to SHDC of the Legionnaires Test had driven this decision. Also it was noted that more use of the shower units had been to wash beach clothes and equipment rather than beachgoers themselves. It was decided to enquire as to whether Discovery Surf School might be persuaded to adopt and maintain the shower units.
- (iv) **Privatisation of Waste Disposal** (Management) Service. It was confirmed that existing SHDC staff would be transferred under TUPE regulations to the private company. This would also release SHDC from additional contributions to the Pension fund of the existing staff being transferred. There would be a saving to the SHDC over eight (8) years of £3,200.00 with savings in the first eight months of £286,000. Brown Bins for the "time being" will remain FOC. A new Council may review and change this post 2nd May 2019. Included in the service would be collection from public toilets, street cleaning, street waste bins and dog bins. Complaints and comments would still be channeled through SHDC, giving them direct oversight as to the quality of the service in the minds of the public. The contractor was the same as that used by West Devon Borough Council. RG confirmed that the decision had been approved by 80% of the

SHDC. [If all voted this would be 24/31 Councillors].

6/OPEN SESSION

The following were raised in open session:
Stuart Watts gave a report on the current funding dilemma for the **Aune Patrol**. He asked whether the Parish Council would consider a contribution, either directly or indirectly with others. After some discussion it was agreed to bring the matter formally onto the Agenda for the February BPC meeting, by which time more information as to the funds needed, the commitments to date, in order to allow the BPC to make a decision in respect of a contribution.,

Resident B reported that, not only were the **BT telephone boxes in poor condition**, noting the comment in matters arising, but also they were being **used in the distribution of daily newspapers**. Therefore, was it possible for them to be **used for books** too? Since it seems that some are in the **ownership of the Defibrillator Charity**, could they be approached for use of their boxes for newspapers, books and tourist information literature?

Resident C reported that the **bus shelter boards needed to be refurbished**. Also, the road lines were obscured and faded at Sedgewell, partly because of overhanging shrubbery. RG suggested a note to Highways Adam Keayes to utilise the white line team when next in the vicinity. In addition can the **current roadworks in and around the Royal Oak** be explained, in particular the heavy plant in the adjacent field. It was confirmed that this was to install the treatment plant for the houses being built on the Royal Oak site.

Resident D sought assurances that not only would the large stones that have been removed would be re-installed, but that the area would be generally reconstituted. Resident D also asked could the works be properly lit at night.

Resident E requested that in respect of **Waves Edge**, precaution be taken and assurances given that the new dwelling would not exceed the ridge height agreed by the Inspector at Appeal. Can an external agent be used to ensure before any work is started a suitable reference point is established against which to measure the work and the new ridge height. Kate Cantwell of SHDC Building Control is to be contacted. Action GR.

Resident F it was noted that spoil had over spilled onto the roadway at the **Bay Café**. RG advised to contact Adam Keayes and request that the **Lengthsman** be sent out to deal with the matter.

Resident G mused as to whether there was a possibility of a **Post Office being provided in Bigbury on Sea**. GR commented that since rural Post Offices did not generally receive salary, but only commissions, this

BIGBURY PARISH COUNCIL - minutes of meeting 9th Jan 2019 at Memorial Hall, St Ann's Chapel

may prove an unsurmountable obstacle to any applicant.

Resident H noted that **Wide Load** [usually Mobile Homes for Park Dean] **escort vehicles**, quite often recently and at night were too close to the load and did not have their header board lit, causing confusion amongst other road users.

7 PLANNING RELATED MATTERS (APPLICATIONS AND UP-DATES).

The first three of the following items have already been dealt with and where necessary the BPC responses lodged with SHDC.

(a) 3681/18/FUL The Byre Challons Combe to Bowls Cross TQ7 4AN.

(b) 3743/18/FUL Land at SX 652 442 adjacent to Southway.

(c) 3833/18/FUL Nantucket Parker Road B on S TQ7 4AT.

(d) 4119/18/FUL Little Court Bigbury TQ7 4AP. After discussion it was agreed to support with the following condition(s) that cladding be with natural timber and not artificial materials. Proposed VS seconded SS approved unanimously. GR to submit.

(e) Neighbourhood Plan [NHP] up-date: VS reported that SHDC had advised on 21.12.18 that the St Ann's Chapel site would have affordable Housing content of (i) four for rent, (ii) four right to Buy. All eight with a proven local connection. (iii) three open market and (iv) two to the landowner; one for the family and one an agricultural worker. VS also confirmed that 9 amendments were included in the SHDC document, arising from the open meeting held in the Community during November. Devon Home Choice are the "Housing Association" involved and interested parties should register with them. The project has been allocated application number 4214/18/FUL. However the application has not been submitted as awaiting of all green spaces. The detailed document is available for Parishioners to read. VS responded to CC in respect of the Powers attributed to Green Spaces are similar to those attributed to Green Belt.

Bantham Estates and the Bigbury Golf Club. This was discussed as the whole area fell within the Parish and any developments on or near to it, ought to be considered when preparing the Neighbourhood Plan, but not included within it. VS said that her understanding was that Bantham Estates wished to build a development of five houses on land adjacent to the Golf Club. This may have a beneficial effect on the issues between Bantham Estates and their tenant the Bigbury Golf Club.

It was agreed to approve the latest Neighbourhood Planning document as it related

to the adoption of Green Spaces. Proposed GR, seconded BH with five voting for one abstention CC [arising from a personal interest].

8 /FINANCE PAYMENTS

The payments presented for approval were read out and agreed. Proposed SS seconded BC and approved unanimously. SS presented and read out the bank reconciliation and the balances of Restricted, Designated and unrestricted funds.

9 / PRECEPT FOR THE YEAR APRIL 2019 TO MARCH 2020.

BC reported that the Finance committee had met on the 3rd December 2018 to set the Precept. It was recommended to Council that the Precept be held at the same level as 2018/19 of £16,500. Proposed GR seconded VS and approved unanimously.

10 / PLAY PARK UP-DATE - CC

CC recommended that there be a children's with parents' consultation on the final scope of the equipment and layout of the Play Park. This was agreed. Action CC CC reported that we had, not only Parish Reserves, but also funds available from the Section 106 monies held by SHDC.

A possible extension of the Play Park was considered, which would mean reducing the size of the current football pitch, which, in fairness is not used that extensively. It was agreed to place this on the BPC February Agenda for discussion and resolution.

11 /REPLACEMENT of DEFIBRILLATORS.

The cost of replacing the current three (3) defibrillators is £3,800.00. As at 5th December 2018 funds in hand were £2,709.42, leaving a shortfall of £1,090.58. It is expected that we will make a joint application with Ringmore and the shortfall will be eliminated by additional contributions or a further Grant. This application will be made 02.02.2019 to SHDC.

12 /SNOW WARDEN VACANCY AND OVERVIEW OF THE STATUS OF THE GRIT BINS

Grit Bins - Previously RG of DCC had said that DCC's grit bins had been filled. BC stated that BPC's will be filled shortly. Where SHDC were involved they were to be prompted.

Snow Warden – invitations were invited to fill the vacancy.

13 / CORRESPONDENCE

(I) The **Royal British Legion** had sent a thank you letter for the funds raised, together with a Certificate.

(II) **George Luckcraft's** complaint about the absence of a Wreath on the War Me-

morial in November. BC confirmed that it had been placed at Kingston for the joint three villages Service. However BC would send a letter of explanation and apology. Action BC.

(III) New residents in Bigbury (lower Bigbury) had expressed concerns about the level of traffic on the roads, SHDC had not been sympathetic in their reply.

14 / ITEMS FOR THE FEBRUARY AGENDA

(I) Play Park and Consultation

(II) Church Gateway Scheme – Schedule of works from PCC

(III) Footpath – Memorial Hall to Easton access.

(IV) The next meeting to be 20th February 2019.

(V) The March meeting remains the second Wednesday 13th.

(VI) NHP Group – Six week Consultation commences Saturday 2nd February 2019.

There being no other business the meeting closed at 9.43 pm.

Minutes Signed by
Cllr Bryan Carson - Chair

MEETING CHANGE of DATE

20th FEBRUARY (not 13th February)

NEIGHBOURHOOD PLAN CONSULTATION

**Saturday 2nd Feb
Memorial Hall
10.00 am to Noon**

BIGBURY NEIGHBOURHOOD PLAN THE PRE-SUBMISSION CONSULTATION VERSION

THIS PUBLICATION IS NOW AVAILABLE FOR INSPECTION
AND/OR DOWNLOADING ON THE BIGBURY COMMUNITY
WEBSITE:

www.bigburycommunity.co.uk/groups/neighbourhood-plan/documents/

CONSULTATION EVENTS...

WE ARE ALSO HOLDING TWO CONSULTATION EVENTS IN THE
MEMORIAL HALL AT THE FOLLOWING TIMES:

WEDNESDAY, 30 JANUARY BETWEEN 7PM AND 8.30PM

SATURDAY, 2 FEBRUARY BETWEEN 10AM AND 12NOON

PAPER COPY OF THE NEIGHBOURHOOD PLAN CAN BE VIEWED AT THE HOLYWELL STORES AND
COPIES ARE ALSO HELD BY THE FOLLOWING MEMBERS OF THE STEERING GROUP:

CLLr VALERIE SCOTT (BIGBURY VILLAGE) 01548 810338 | CLLr BETH HUNTLEY (BIGBURY ON SEA) 01548 81038

CLLr BRYAN CARSON (EASTON) 01548 810296

A LEAFLET PROVIDING FURTHER INFORMATION ABOUT THIS CONSULTATION IS AVAILABLE IN
THE HOLYWELL STORES AND ON THE WEBSITE. THERE IS A COMMENTS FORM ATTACHED.

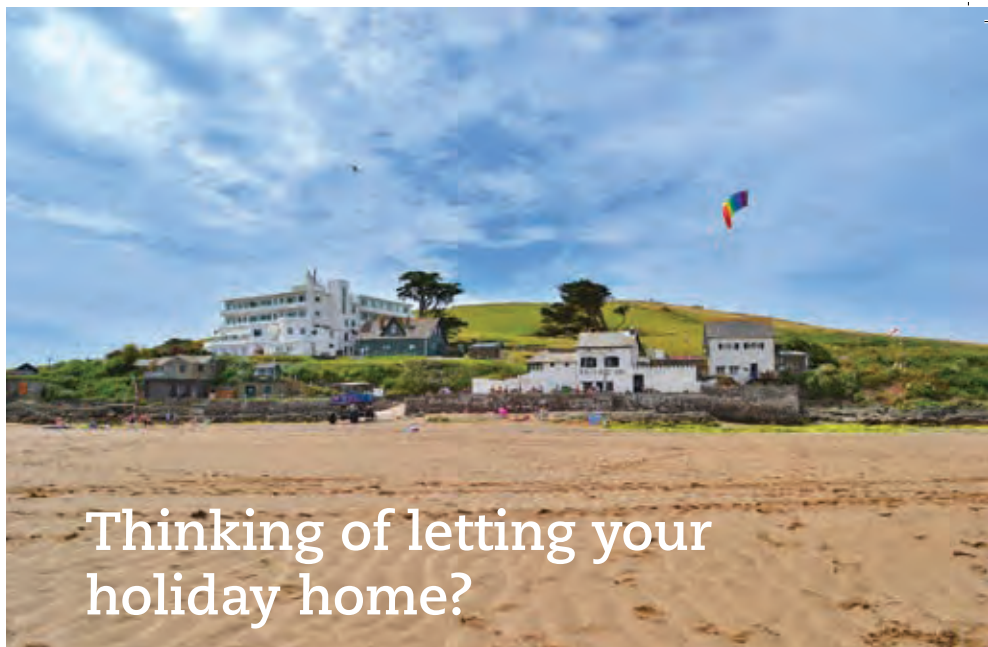
MATTHEW BISSEX ARCHITECTURAL DRAWINGS PLANNING AND BUILDING REGULATIONS APPLICATIONS



PLANS DRAWN FOR ALL EXTENSIONS
LOFT CONVERSIONS, CONSERVATORIES,
NEW BUILD HOUSING.

Visit my website at www.mbad.co.uk

For a free quote on plans for your build project contact
Matthew on 01761 436861 or mobile 07843 286857



Thinking of letting your holiday home?



Speak to your local holiday letting specialist

Looking for more from your holiday
cottage agency? Then speak to
award-winning Toad Hall Cottages.
Our experienced team of property
managers have the knowledge to
ensure that your investment fulfils its
potential throughout the year.
Call us now for free and honest advice.



2017
**Trusted
Service
Awards**
★★★★★
feefo

Call us on: 01548 202020 | www.toadhallcottages.co.uk

Visit the Nkuku Lifestyle Store and Café

At Nkuku we create beautiful
homewares, accessories and gifts. We
work with artisans throughout the
world, combining timeless design
with traditional skills and natural
materials.

The Nkuku café serves the finest
artisan, wood roasted coffee; served
by an experienced barista each blend
has been personally curated ensuring
a delicious flavour. The café serves
brunch, cakes and light lunches.

The pretty courtyard features a
covered seating area; the perfect
spot to while away an afternoon.

Free parking and Wi-Fi available.

VISIT US

Nkuku Lifestyle Store and Café
Brockhill Barns
Harbertonford
Tornes

Devon TQ9 7PS
Tel: +44 (0)1803 463365

OPENING HOURS

Monday – Saturday | 9am – 6pm
Sunday and Bank Holidays |
10.30am – 4.30pm
www.nkuku.com



nkuku
HOME AND LIFESTYLE

The Bigbury Beach Shop



EST. 1997

Coastal lifestyle & Gifts
Souvenirs, Beachwear & more
Everything you need for a
day out in Bigbury-on-Sea!

01548 810788

www.bigburybeachshop.co.uk

**BEACH SHOP
OPENING AGAIN**
February **HALF TERM**
10.30 am to 3.30 pm **DAILY**

VENUS OPENS
EVERY DAY 10.00 am to 5.00 pm

HOLYWELL STORES

Your one-stop shop



Premier
Amazing Value Locally

Salcombe Bakery Bread, Patisserie & Jam Doughnuts.
Are Available On Saturdays.

NEW OFFERS until 12th Feb:

Bacardi, Gordons pink Gin (£14) Martini Prosecco £7.50; Malteser Truffle Gift Box £3.49; McVitie's selected lines 2 for £1.50; PG Tips Half Price £1.39; Felix Cat Food= £3

If you need a WELCOME PACK of groceries organised for visitors - this can be arranged by emailing Jas

holywellstores@outlook.com

POST OFFICE OPEN MON-FRI 9am to 1pm

Holywell Stores & Post Office, St. Ann's Chapel, Bigbury



Shop Open
Monday - Saturday 7am - 6pm
(7am-8pm July & August)
Sunday 8am - 5pm

Free Car Parking behind the shop
Tel: 01548 810308
Email: holywellstores@msn.com
www.2dayws/holywellstores

**25% OFF
FOR LOCALS**

PLEASE BRING ID SHOWING HOME ADDRESS

AVAILABLE AT BLACKPOOL SANDS,
BIGBURY ON SEA & WATERGATE BAY

OFFER VALID FROM 7TH JANUARY
TO THE END OF MARCH 2019

EST. 1958

VENUS

loving the beach

BEAUTIFUL LOCAL FOOD

www.lovingthebeach.co.uk

