



# BIGBURY NEWS

FEBRUARY / MARCH 2023

[www.bigburynews.com](http://www.bigburynews.com)

Issue 476

## IN THIS ISSUE

**PLANET LOCAL**  
our sustainable festival

~

**THE PICKWICK INN**  
open for business

~

**SAVE ENERGY**  
reduce bills

~

**BELL RINGERS**  
join the team

~

**BIGBURY GARDENERS**  
fruit forests

~

**FARM GATE**  
Challon's Combe

~

**BIGBURY NET ZERO**  
insulation

~

plus  
**COMMUNITY NEWS**

~

**BEACH BANTER**

~

**BUSINESS NEWS**

~

**BIGBURY KITCHEN**

~

**THE 19th HOLE**

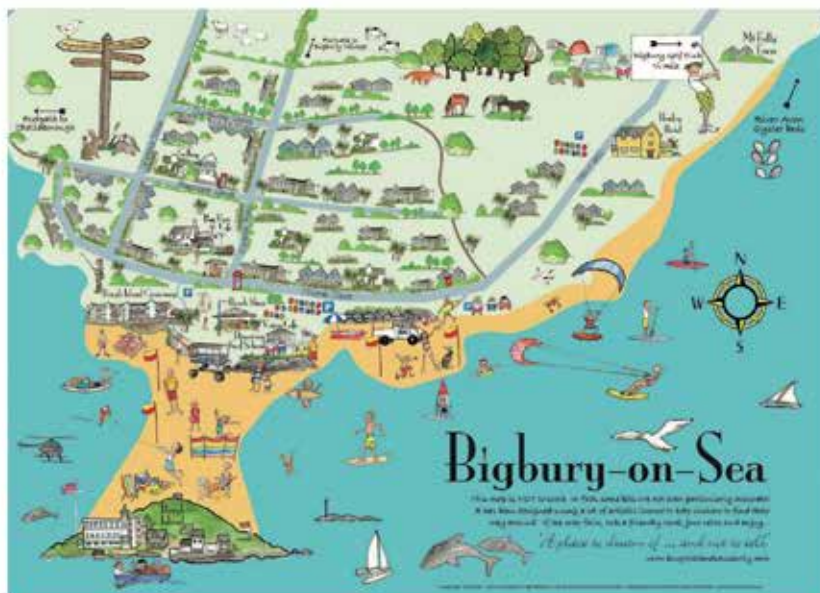




## BIGBURY ON SEA HOLIDAYS

[Bigburyonsea.co.uk](http://Bigburyonsea.co.uk)

The site for great holidays in a great community;  
now gives the accommodation, holiday activities,  
many useful links and maps.



Now features community events and dates.

Send any ideas for the site to

[John@BigburyOnSeaHolidays.com](mailto:John@BigburyOnSeaHolidays.com)

## BIGBURY NEWS 2023

### COPY DEADLINES

15 January for the February / March Issue  
15 March for the April / May issue  
15 May for the June / July issue  
15 July for the August / September issue  
15 Sept. for the October / November issue  
15 Nov. for the December / January Issue

### FREE COPIES

Bigbury News is distributed free to 450 homes and businesses in Bigbury.

### ANNUAL DONATIONS

from supporters are welcome and needed!  
Cheques 'Bigbury News' post to:  
The Treasurer, Bigbury News, Long Easton,  
Easton, TQ7 4AN.  
OR BACS details - Name: Bigbury News  
Sort Code: 30-99-12 Account: 29305568  
Ref: DONATION

### FREE DOWNLOADS

from our website at [www.bigburynews.com](http://www.bigburynews.com)

*DISCLAIMER Bigbury News and Editor cannot be held responsible for any loss or inconvenience caused by any inaccurate information contained within this magazine. Please contact the relevant party directly to confirm the details of any information or event. Inclusion of a business advertisement does not imply a recommendation by Bigbury News or the Editor. Please take up references of previous clients or customers before enlisting the services or products advertised herein.*

### COVER PHOTO CREDITS

Top: Nancy Singleton  
Middle: Lynda Kelly  
Bottom: Lynda Kelly



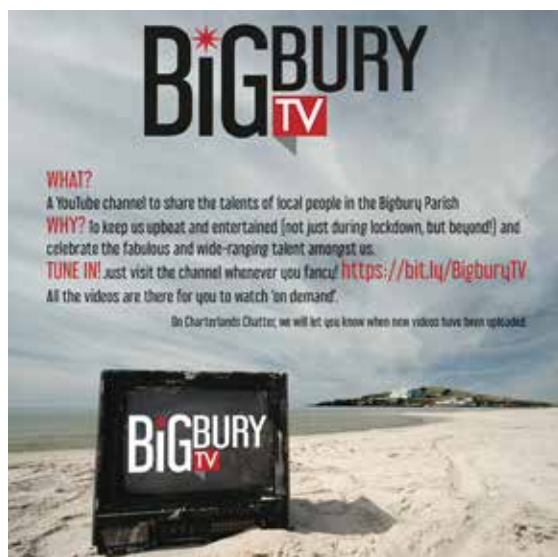
**BIGBURY NET ZERO DRUMS**  
*Together we can make a Difference*

### SIGN UP

to a weekly Mail Chimp newsletter about local events and alerts, via email. Please complete the on-line form at [www.bigburynews.com](http://www.bigburynews.com) or contact the BNZD editor: [henry.wainwright52@gmail.com](mailto:henry.wainwright52@gmail.com)

### ADVERTISE LOCAL EVENTS

Send your event posters to the BNZD editor. Events in the South Hams are also promoted.



Editor: Jan Davies [bigburynewseditor@gmail.com](mailto:bigburynewseditor@gmail.com) Treasurer and Advertising: Henry Wainwright [henry.wainwright52@gmail.com](mailto:henry.wainwright52@gmail.com)  
Distribution Manager: Dane Vanstone  
Distribution Team: Simone Stevens, Jim Bennett, Don Dyke, Peter & Gill Cook, Trish Bagley, Jill Gubbins, Suzy Owlett, Danny Grace, Burgh Island Causeway, NISA shop, Park Dean, Rosie Fish, Sally Watts, Becky, Jenny Very, Jane Tucker, Burgh Island, Hexdown, Oyster Shack, Venus Cafe, Jas & Jaswinder Kooner at Holywell Stores

## EDITOR'S LETTER

Dear Readers,

I hope you all had an enjoyable Christmas and New Year. Spring is on its way but we still have a few more months of cold weather ahead so I hope you find the features on energy saving and insulation interesting.

Having now edited and designed my second edition of Bigbury News, I am more confident (and quicker!) at using the design software, which is the same one used by the previous editor, Louise Wainwright. It's Adobe InDesign, a professional desktop publishing and page layout software application. Once I have designed the magazine, with all the articles and photographs in place, I convert it to a PDF file, upload it to the online printer and then upload the same PDF file to the Bigbury News website. While Louise Wainwright was editor, she started using an online printer and we could see the improved paper quality and photo clarity, so for my first edition I opted to use the same online printer and I intend to keep using them. Our Treasurer, Henry Wainwright, explains below how he and Louise came to decide on using an online printing service last year.

Best wishes to you all,

**Jan Davies, Editor**

**bigburynewseditor@gmail.com**

For many years Bigbury News has been printed in-house, which has involved a bulky printer occupying a large space in the editor's home. The printer produced the 480 copies, which took over three days, assuming that the printer did not break down or run out of ink. In the early days, Bigbury News was hand stapled but later this process was automated, though this was just something else to go wrong with the machine. The printers were leased on a five year contract and in 2022, the cost of production was £1.46 per copy of Bigbury News. During COVID, supplies of ink became erratic and servicing the printer was problematic, which made in-house production very stressful.

Since Louise Wainwright took out the last 5 year printer lease back in 2017, there has been a revolution in online printing. Whether this is your favourite photographs, calendars or booklets, this just involves sending off your files and the printed versions arrive back in a few days. In 2022 we tested this process by having Bigbury News printed by an online printing company. We, and I hope you agree, found that the quality in colour reproduction and paper was superior. There was much less stress and time involved operating the leased printer. The final benefit was that the cost was less at £1.17 per copy of Bigbury News. The down-side is that the leased printer was used for printing posters and small flyers in small runs, which may not be viable to have done online. We hope to accommodate this by using our personal printer for small print runs.

**Henry Wainwright, Treasurer**

**henry.wainwright52@gmail.com**

### SOCIAL GROUPS

#### Bigbury Bookworms

Hazel Osborne (temporary contact)  
hazel.osborne6@btinternet.com

#### Bigbury Ladies

Pam Trundle 01548 810719

#### History Society

Charles Harrington 01548 810023

#### Bigbury Coffee Morning

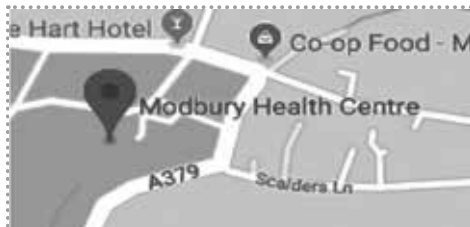
Jean Wright 01548 810029

Yvonne Klidjian

yvonneklidjian@btinternet.com

#### Memorial Hall Chairman

Charles Harrington 01548 810023  
charles\_harri@yahoo.co.uk



Modbury Health Centre  
Poundwell Meadow  
Modbury PL21 0QI  
01548 830666  
www.modburyhealthcentre.co.uk

Modbury Pharmacy  
5 Broad St  
Modbury PL21 0PS  
01548 830215  
www.modburypharmacy.co.uk

## CONTENTS

Community	4-8
Save Energy	9
St Lawrence's Church	10-13
Beach Banter	14-15
Planet Local	16-17
Cocktail Hour	18
Bigbury Kitchen	19
Bigbury Net Zero	20-21
Bigbury Gardeners	22
Wildlife Watch	23
Business Matters	24-25
Farm Gate	27
The Nineteenth Hole	29

## PARISH COUNCIL CONTACTS

### Chairman: Beth Huntley

cllrehuntley.bigburypc@gmail.com  
01548 810385

### Vice Chairman: George Rosevear

cllrgeosevear.bigburypc@gmail.com  
01548 831427

### Councillors:

**Cathy Case** 01548 810079

cllrccase.bigburypc@gmail.com

**Valerie Scott** 01548 810336

cllrscott.bigburypc@gmail.com

**Sharon Smith** 01548 810115

cllrsmith.bigburypc@gmail.com

**Stuart Watts** 01548 8101373

cllrswatts.bigburypc@gmail.com

### Johnathon Fish

cllrjfish.bigburypc@gmail.com

### Parish Clerk:

clerk.bigburypc@gmail.com

## PARISH COUNCIL MINUTES

Minutes of all Parish Council meetings can be viewed in the three parish

Notice Boards at:

- Holywell Stores, Bigbury
- Unwind Salon, Bigbury
- Bus Shelter, Bigbury-on-Sea

They are also on the Bigbury Community website:

[www.bigburycommunity.co.uk](http://www.bigburycommunity.co.uk)



# COMMUNITY

## BIGBURY MEMORIAL HALL

### *Calendar of Events for January/ February 2023*

Day & Time	Activity	Organiser	Contact no.
<b>Mon.</b> 9.30 – 10.30	Pilates	Jill Gubbins	810651
10.50 -11.30	Strong & Steady (plus tea and chat)	Jill Gubbins	810651
<b>Note – NOT February 13<sup>th</sup> and 20<sup>th</sup></b>			
15.45 – 17.00	Table tennis	Angie Bond Janie Grace	811131 811122
<b>Wed.</b> 10.30 – 12.00	Community	Jean Wright	810029
(1 <sup>st</sup> Wed. of month)	Coffee morning	Yvonne Klidjian	810971
(2 <sup>nd</sup> Wed. of month)	Parish Council	Ian Bramble	855712
19.30		(clerk)	
<b>Thurs.</b> 15.30 – 16.30	Line Dancing	Sue Trendwell	550348
<b>Fri. Jan. 13<sup>th</sup></b>			
19.00	Quiz Night	Charles Harrington	810023

## BIGBURY MEMORIAL HALL

### Bringing the Community Together

We had a couple of events in December in the lead up to Christmas. First was the latest in our popular series of Wine Tastings. This one, the theme of which was bubbles, was a little different in that it involved “blind” tastings, with people having to guess the nationality and type of each wine. Over 30 attended and were also treated to some great home made nibbles. Many thanks to Angie, Trish, Janie, Dane and Pete for making it such an enjoyable evening.

Later in the month we showed a screening of A Christmas Carol, performed by Le Navet Bete. Although the attendance was slightly disappointing, those that did come greatly enjoyed the production, which was aimed at family audiences.

The New Year got off to a super start with our annual New Year Quiz. Brilliantly put together by quizmaster Geoff Ross and compered in his own inimitable style by Peter Cook, this saw six teams battling it out for bragging rights for 2023. Eventual winners, after a titanic struggle were, not for the first time, the team from Ringmore.

At the moment the Committee is putting together our programme of events for Spring and Summer, so watch out for details in Bigbury News and Bigbury Drums. What has just been arranged, however, is Every Brilliant Thing, a play performed by Philip Robinson. This will be on March 10th. A poster will be sent to Bigbury Drums as soon as it's available.

**Charles Harrington Tel: 810023**

**Email: charles\_harri@yahoo.co.uk**

## BIGBURY COFFEE MORNING

What a wonderful, festive coffee morning on Wednesday 7th December it raised a fantastic £870 for St. Lawrence Church. Many thanks to everybody who supported us and gave so generously.

During 2022 we raised £3675 for local charities and we look forward to seeing you between 10.30 and noon on Wednesday 1st March when we will be supporting Modbury Caring.

On Wednesday 5th April we will be supporting Hope Cove Lifeboat. Please remember our thank you coffee morning on Wednesday 1st February at 11am in the Memorial Hall. Come and enjoy biscuits cake and a natter.

**Jean, Yvonne and the team.**

## BIGBURY LADIES

The December gathering of Bigbury Ladies was held at the Cottage Hotel, Hope Cove where we met for our Christmas dinner. It is such a gorgeous setting there and they look after us very well. We had a superb three-course meal with a very good choice of menu and it was especially nice to have some extra faces join us, especially several gentlemen. It was as perfect sunny day so we were virtually right on the beach and the food, as ever, was gorgeous.

Please note that all ladies are welcome to join us – we are an informal group who like to meet up once a month for a natter!! In the light of high petrol prices I am sure that any drivers giving lifts would appreciate a donation towards the petrol costs.

**Pam Trundle: 810719 Rita Baker: 810792**

**Chris Curgenvin: 810482**

## BIGBURY WATCH



**Eamonn & Linda Byrnes**

**01548 811104 07790 485102**

Not sure whether to call the police about something of concern? Have a chat with our friendly Bigbury Watch Team and perhaps they can give you some advice.

Eamonn and Linda are retired police officers and live locally.



Could you spare a few hours for the Modbury Caring Befriending Service? Or perhaps you feel that you, yourself would benefit from a few hours a week from a Befriender?

Find out more from the Befriending Coordinator, **Sheila Harrison**

**Tel: 07554 997140**

**modburycaring@gmail.com**

# COMMUNITY

## ~ THE PICKWICK INN ~

### A visit to the revitalized Pickwick Inn, January 2023

As background to my visit, the pub had been closed, shuttered and neglected since January 2022. Externally, the building, which is prominently situated at a key entry junction to the parish, had been a mud-splattered embarrassment. Internally, it was in a sorry state with a leaky roof, floors scattered with litter and an assortment of half-empty wine bottles amongst a selection of beds looking as if they'd just been vacated. Squatters would have been ashamed of it!

Despite rumours that several groups might be interested in rejuvenating the building in some form, the Pickwick was felt by Bigbury Parish Council to be on the verge of being redeveloped as further, unwanted housing at the fast-expanding St Ann's Chapel hamlet, which would mean losing the last remaining pub in the parish – apart from the Pilchard Inn on Burgh Island.

As a result, in October 2022, we set about preparing an application to SHDC for an Asset of Community Value (ACV) designation, which would prevent a 'change of use' planning application and maintain the building as a pub for a minimum of 5 years.

With the generous assistance of Henry Wainwright, editor of Bigbury Drums, we rustled up around 200 expressions of support for 'saving the pub' and the ACV designation was granted in early December.



**Ash**

Meanwhile, Ashley Collins ('Ash') had negotiated a new lease with Greg Dyke, owner of the pub's freehold, and Henry had organized a fund-raising operation amongst over 60 keen supporters to provide almost £5000 for Ashley to help knock the pub into shape ready for opening.



**Holly and Sharon Keates**

As a measure of the success of these efforts, here are some personal reflections on a 6th January visit to the revitalized Pickwick.

It was around 6.45pm on a Friday night, a little over a month since the pub had re-opened under Ashley's brave stewardship and the place was just as everybody imagines a traditional village pub should be – noisy and throbbing, full of conversation and celebration!

There were a couple of joyful, birthday groups in fancy dress with cakes full of sparklers. The bar area was crowded with standing drinkers but there was still space to eat at a table in the dining area (the gluten-free, beer-battered cod was a delight; lovely white flesh within a light, crispy case) and the bar service was efficient despite the crowd.

I almost lost count of the number of familiar faces and friendly greetings encountered during the course of the evening! It seemed as though half the parish was out, happily determined to prove that there is still enormous social value in such a community watering hole, with everybody willing Ash to succeed in his brilliant, hard-working efforts to rescue the pub from its recent dire state.

I could hardly believe the amazing transformation that had taken place! If this visit was typical, there should be no worries about the pub's long-term survival.

**Stuart Watts**

### Monday Night is Darts Night

The new landlord Ashley Collins put up the dartboard so that customers could enjoy the game and I suggested it could become a regular Pickwick Inn social evening. The pub is now a community asset so let's use it, You never know you might be good at it but you will certainly enjoy trying.



So how old is the game of darts? Older than the Pickwick! The game of darts is about 700 years old, but it has been around in one form or another for a very long time. There are different versions of the story, but most historians agree on a few facts.

First, the development of darts as a game originated in England during the medieval era in the 1300s. The second fact on which most historical accounts agree is that darts began as a military pastime to practice their skills and aim in between battles.



Darts is now one of the most popular sports in the UK and is widely played both at home and often in pubs across the country. It comes in the 9th most popular just behind tennis! A simple game that anyone can play and enjoy.

Monday Night is Darts Night from 7pm. Beginners and League Champions welcome!

**Lynda Kelly**



# COMMUNITY

## 🎵 BIGBURY COMMUNITY CHOIR 🎵

It was with not a little trepidation that I formed a new choir in November 2022 ... unfamiliar setting, unfamiliar parishioners and they were certainly unfamiliar with singing four part harmony traditional Christmas Carols taught in a capella style with no accompaniment! However, I had a concert date booked and entertainment to provide- big style. This had to work ... somehow!

To say this was a leap of faith for everyone involved might be an understatement. We flapped our arms, did some heavy breathing, danced about the room greeting each other with strange noises...and indeed some quantities of wine were drunk- at every rehearsal.

From shaky beginnings progressing to a wobbly middle section, then almost disaster at the penultimate-but-one fence. At our final and only 7th rehearsal, we absolutely cracked it!



Up at the Burgh Island Hotel, we sang wonderfully, dressed the part and had a thoroughly good time. The guests did too! There was a great sense of achievement from everyone involved. Such a pity that illness struck a couple of the choir off just as we were about to reach the pinnacle - but you know, there ought to be another time to try again.



I had a number of really lovely messages from the choir to say how much fun they had and how they could hardly believe what we had managed in such a short time. So thanks so much to all the members of the Bigbury Community Choir for being so game and rising to a massive challenge - and then really pulling it off! I was really proud of you all.

Now Dane tells me there's going to be a little shindig at the Memorial Hall for the new King's Coronation and that the choir might like to come and lend their voices. So, how about it? If you fancy joining in and doing something fun with lovely friendly people from the locality, whether or not you have any experience with singing, why not join in?



Choir will reconvene from April and will rise again to raise a few glasses and voices. Details a bit nearer the time. So, finally, a huge thank you to Giles and Niki at Burgh Island Hotel for inviting us to sing and a really big well done from me to all of the newly formed Bigbury Community Choir. We did it and had a blast! **Apple Taylor**





## ~ CAROLS ON THE GREEN ~

Once again the weather was kind to us and Carols on the Green was successfully held on Bigbury green on Christmas Eve. Well over one hundred gathered on the green and enjoyed mulled wine, mince pies and sausage rolls prior to singing a selection of carols. An event that has been held for over 25 years. Many thanks to the great music accompaniment provided by Jo Highley, and the Lindeque and Case families. Bryan Carson was his usual inimitable self as MC and John Elliot read his topical rhyme (see below) along with some brief reflection on the spiritual context to the event. Also many thanks to those who helped with refreshments and logistics including the Gilberts, Dane Vanestone, Fiona Barker, Holywell Stores and the Pitt, Wainwright and Carson families.



## 40th WEDDING ANNIVERSARY

We're sure you'll all want to join us in congratulating Bryan and Angie Carson on recently celebrating their 40th wedding anniversary! Surrounded by all the family and close friends, The Oyster Shack provided a wonderful venue to mark the occasion. Heartfelt thanks to the Shack crew for the most delicious food and thanks to everyone who came to celebrate this momentous occasion. **Chris Carson**



Santa was worried about his Christmas route  
Okay he'd be visible in his bright red suit  
But would he get past the Amazon vans  
Especially with road closed signs at St. Anne's

So he called in the boys led by Rudolph Red Nose  
What good is your bright hooter when road says "Closed"  
No problem said Rudolph "Don't you worry my Boss,  
I'll sort out the route from Harraton Cross

At Seven Stones Cross the signs knocked over  
A d.f.l. \* on black ice with posh Range Rover  
He galloped on at a good old lick  
Until blinded by lights at the re-opened Pickwick

The signage was crazy all over the place to confuse  
Which way to go which road to use  
The one to Ringmore was a definite no go  
But all the locals ignored it and went too and fro

Better news a few yards on the pot holes had gone  
Thank you to the builders a good job done  
So on he went towards a hill called Folly  
Just pausing to grab a most excellent cauli

He got to the car park and saw Bigbury Bay  
But the tide was in so to Burgh Island no way  
I'll have to check if on the 24th we'll be able  
So back to Holywell stores to buy a Tide Table.

He came back to Santa and gave the good news  
A route that Santa would be able to use  
The bigger good news for the Bigbury people  
Hinted by the excellent bright new steeple

Proclaimed to all : as well as those at the Church  
God has not left us in the lurch  
Just as Rudolph checked out the way  
He sent me here with good news to say

For you God has so much love  
He sent down his son from heaven above  
A present of huge love wrapped in Jesus for you  
But make sure you don't tread in that reindeer poo

\*dfl= "down from London



## BIGBURY COFFEE MORNING



### WEDNESDAY 1<sup>st</sup> FEBRUARY

A 'Thank You' coffee morning  
11am in the Memorial Hall for our  
loyal supporters of the coffee mornings  
(no stalls)

### WEDNESDAY 1<sup>st</sup> MARCH

The Memorial Hall, St. Ann's Chapel  
10.30am to 12 noon  
Entrance £1 to include coffee/biscuits

Bric-a-Brac, Books, Cards, Silk items  
from Cambodia, Cakes, Savouries,  
Raffle, Guess the weight of the cake etc.  
Supporting  
**Modbury Caring**

## NOTICE BOARD

### BIGBURY GARDENERS

SWAP AND  
SHARE YOUR SEEDS  
& STORIES

# SEEDY SUNDAY

10-11am

## 5TH FEB PICKWICK INN

How it works?

Donate seeds in a labelled envelope  
Bring along to the seed table.  
No seeds to swap no problem just donate 50p  
Pickwick will be serving bacon haps with tea & coffee  
Let's chat about seeds, plants, re wilding and more

Sponsored by Herb Heaven Devon

## Darts Anyone?

Every Monday from 7pm



**Beginners welcome.**  
**A Fun way to meet new people**

**THE PICKWICK INN**  
ST Ann's Chapel

## Christmas Cards - SOLD OUT!



Thank you so much  
for supporting this  
amazing charity.  
**Nancy Singleton**



## Defibrillator Awareness Session

Venue/Location  
**Modbury Recreation Pavilion**

Tuesday 28th February/1900hrs

**AED**  
**Free attendance**  
EVERYONE IS WELCOME

**Brazilian Jiu Jitsu**  
Builds confidence and relationships  
Improves focus and concentration  
Promotes physical activity and coordination

**Ringmore Parish Room**  
Wednesdays

Kids 4 - 11yrs @ 17.30 - 18.30  
Juniors 12 - 17yrs @ 18.30 - 19.30  
£3 per session. 1st session free!  
DBS checked Instructor Eoin Murphy  
Ocean BJJ Plymouth Affiliated

07913200763

# SHOP local



**Lerner & Loewe's**  
**MY FAIR LADY**

**Wednesday 22nd - Saturday 25th March 2023**  
Malborough Village Hall. 7.30pm  
Tickets available from Monday January 6th  
Visit [kats-kingsbridge.co.uk](http://kats-kingsbridge.co.uk) or call 07584 905810

This amateur production is presented by arrangement with Music Theatre International.  
All authorised performance materials are also supplied by MTI



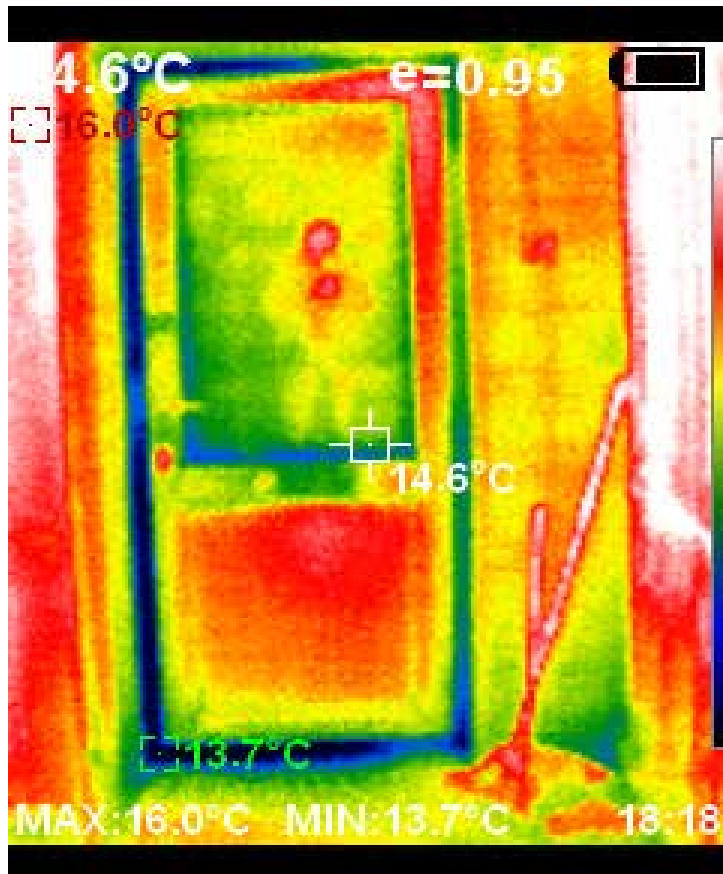
# SAVE ENERGY ~ REDUCE BILLS

Even a well insulated house leaks heat somewhere. A Thermal Imaging Camera can help you identify where this is happening and in many cases the draught or leakage is easily and cheaply fixed. Window and door seals can be purchased and fitted for a few pounds. Even Grade II listed buildings can fit thermal curtains or blinds to reduce heat loss via the windows. This is also a consideration for some older double glazed windows which may not be as efficient as you might like.

I know that our house's insulation can be improved but my query was what would give me the most immediate and best return. Do I lose more heat through the windows or through the roof, are there unseen draughts or are there places where the cavity wall insulation is not doing enough? I borrowed the camera from Henry Wainright, who has it on loan from SHDC until next spring. The camera is very easy to use and a whole house can be surveyed, inside and out in a couple of hours. More care needs to be taken when interpreting the results.

Here are some hints to get the best results:-

The camera only compares surface temperatures in the frame although it does give the maximum and minimum temperatures in the photograph. So, one trick, in order to get comparisons across several photos, is to place a bowl of ice cubes in the foreground of each picture. This gives you a datum reference of zero degrees centigrade on every photograph. It is best to take a normal photo (non infrared) of your target first and then by pressing the left/right button you can change to an infrared photo. Press the trigger and then press the 'save' button and go to the next target. This is helpful in identifying exactly which door or window was in the shot when you come to analyse the photos. To get the best results you need the biggest temperature difference between outside and inside that's practical. Therefore taking pictures in an evening will be better than midday. Also having some heat on in the room you are examining will emphasise the difference between outside and inside.



**BOOK THERMAL SURVEY**

**BIGBURY NET ZERO**

Easy ways to save carbon and money  
Carbon footprints, step by step  
How groups can save more carbon together

**BOOK** - free home thermal imaging survey  
henry.wainwright52@gmail.com

**FIND OUT** - where the winter cold is getting inside.

**FOCUS** - your insulation where it's needed most.

**JOIN** - community volunteers team to survey homes  
in Bigbury, Ringmore, Kingston,  
Modbury and Aveton Gifford

**WHAT NEXT?**  
Come along to the Carbon Savers Club to find out  
about local support and advice on energy savings

2nd November - Intro to carbon footprints  
7th December - Home energy

I started taking internal pictures looking outwards with curtains and blinds drawn. I then repeated the picture with curtains open after allowing 20 mins for the temperatures to normalise. This was to see if the curtains were having an effect. Secondly I repeated this program standing outside and looking in towards the building not forgetting roofs and overhangs. The photos are easily downloaded by plugging the supplied cable into both the camera and a USB port of your computer and downloading in the normal way (highlight all photos and either copy or move to a new file you have created in your computer memory for the purpose). These can then be analysed at your leisure whilst the camera is used by someone else.

Analysing the photos needs some thought. There are the easy quick fix items, such as a door not sealing correctly, which shows a blue colour around the door jam whilst everywhere else is a warmer colour (green, yellow, red, white). Care needs to be taken if you see that you have ceiling heat leakage next to light fittings. Some ceiling lights create heat and should therefore not be covered by ceiling insulation as this may cause a fire. This will show on a photo as a red or white hot light bulb surrounded by blue (non insulated) and then further away green or yellow (insulated).

When interpreting the photos you may see vivid colour differences but it is necessary to look at the temperatures because in one photo the difference may only be one degree whilst in another it maybe ten degrees. Obviously the greater the temperature difference of the leak, the more important the fix. So the process is to identify all the heat leakages and list them. Then list the temperature difference from the photo and if possible identify the temperature difference of exactly the area you are reviewing. You could go on to put some approximate potential costs against rectifying these problems. You can then start to construct a priority list and proceed according to your budget.

**Richard Baker**



## ST LAWRENCE MATTERS & THE in SPIRED APPEAL for the Restoration of St Lawrence's Church

### THE VENUS COMPANY SUPPORT FOR ST. LAWRENCE CHURCH APPEAL HELPS TO RING THE BELLS ONCE AGAIN ACROSS BIGBURY PARISH

With three beach cafes across South Devon located at Bigbury-on-Sea, East Portlemouth, and Broadsands in Paignton, Venus believes in giving back to the local community.

The multi-award-winning business has been making regular donations over the last two years to 'The Tower & Bells Restoration Project' at the magnificent and historic church of St Lawrence, which is partly C14th and partly rebuilt in 1872 by J.D. Sedding.

Michael Smith – M/D The Venus Company says: "Sustainability is part of our DNA, and we love the beach as a habitat, so taking care of it and the surrounding area is integral to our business philosophy. Our Bigbury-on-Sea beach café indoor dining area has spectacular views across to the iconic Burgh Island and Bantham, boasting some of the best South Hams coastline come rain or shine. St. Lawrence Church is an important part of the local community. We felt it was important to get actively involved by donating funds to help support this wonderful initiative."



Jill Gubbins, fundraiser, says: "On behalf of the PCC of St Lawrence Church, may I tender our deep gratitude to the Venus team for the fantastic support given to the Tower & Bells Restoration project over the last two years; the total donated is a wonderful £3,643.48, which is very much appreciated by all involved in getting this long outstanding work underway.

The tower had been repointed at some point with cement mortar, which cracks and lets the rain ingress, leading to deterioration of the steel frames and wooden structures supporting the six bells, making them unsafe to ring for twenty years. The tower joints have now been repointed with more appropriate lime mortar specified for heritage buildings, allowing the joints to 'breathe' and accommodate movement.

The cockerel has been firmly replaced on the spire top, and new floors, ceilings, and oak door have been installed in the tower."

Jill concludes: "May Venus Company continue to thrive in our lovely part of England! St Lawrence looks forward to inviting the Venus team at Bigbury to the rededication of the bells in due course.

It's thanks to the great support such as Venus Company has offered, that the parish can take pride in its Grade 2\* listed church again, the tower of which now stands out well on the skyline, and which can allow bells to ring out in May for the new monarch!"

[www.lovingthebeach.co.uk](http://www.lovingthebeach.co.uk)



## ST LAWRENCE MATTERS & THE in SPIRED APPEAL for the Restoration of St Lawrence's Church

As all was quiet on Christmas Morning, you will have guessed that St Lawrence's bells did not return as anticipated by Christmas!

Watch this space – we are pressing the firm concerned for news of a date. The bells re-installation is being eagerly awaited by various media.

After November's filming for the National Churches Trust, (NCT), BBC Spotlight ran an item in the first week of January on the national shortage of bellringers.

It was thanks to local resident Johnny Morris of the BBC raising St Lawrence's project with their arts reporter that at very short notice people came together to be filmed in St George's, Modbury, where some of our trainee bellringers are being kindly tutored in the ringing art by John Irish and others!

Peter Cook was also interviewed the next morning by Radio Devon about bell ringing. Quite a few people both locally and further afield caught these features, which can be found via You Tube and Bigbury TV.



Following on from their generous donations into the appeal fund over the last two years, Venus Company instigated an article in a mid-January edition of the Kingsbridge Gazette, helping keep the project in the public mind.

A further feature is being produced on behalf of the NCT in order for the organisation to report back to Government on the help provided through the Heritage Stimulus Fund, which was so very timely financially for St Lawrence in late 2021.



**YOUR BELLS NEED  
YOU**

Want to learn how to bell ring?  
Want to ring bells again?

Please come and join our recently reformed team of bell ringers at St Lawrence's Church, ringing the bells again after 20 years of silence.

Interested?  
Please call Peter Cook on 01548 810156

It is very much hoped that all such publicity will help focus our community and a wider public on the importance of looking after our heritage buildings and traditions, and bring people together more.

Despite the lack of bells calling us to church over Christmas, there was a good turnout for the carol service on December 18th and the communion service on the 25th, with several visitors coming along and warmly welcomed.



At the start of December, Jean, Yvonne and team held the Community Coffee Morning in aid of St Lawrence. A fabulous £870 was raised at a most attractive event, well done to all involved.

### ~ BELL RINGERS ~

As said in the last Bigbury News, a recruiting drive is on nationally for some 30,000 new bell ringers to 'Ring for the King' during the May coronation celebrations.

Thank you to those people who have already stepped forward to learn and practise bell ringing at Kingston and Modbury churches, in readiness for the return of 'our' bells.

If you would like to try your hand too, please contact Bryan Carson (01548 810296). This does not commit you to longer term bell ringing, just give it a go!

### Community Christmas Card

This raised £215, and we hope you enjoyed the cover by the late James Stevenson of Ringmore.

As soon as the weather improves enough to allow work, it is intended to finish the corner of the graveyard behind the new pedestrian gate and develop a little further the cutting garden nearer the church entrance.

Some plants and most usefully an hour or two of actual help will be needed, so if you would like to know more, please do contact Jill (810651) to discuss.

And so we face the second and third months of 2023 – let us hope they bring news of the bells' return home and work starting on the vestry, the last part of the Tower & Bells Restoration!

If you have any queries or offers of help and ideas, please contact Bryan Carson (810296) or us, and do visit the church, which is usually open during daylight, or join in a service, you will be very welcome.

**Vic and Jill Gubbins**

01548 810651

[gubbinsjill@gmail.com](mailto:gubbinsjill@gmail.com)

[www.bigburynews.com/church](http://www.bigburynews.com/church)



West Country Stoves  
Contemporary & Traditional  
Wood, Multi Fuel, Pellet & Gas Stoves



- Advice
- Free Site Visits
- Installation
- Annual Servicing
- Chimney Sweeping
- Kiln Dried Logs

t: 01548 550400

e: sales@westcountrystoves.co.uk

www.westcountrystoves.co.uk

## ~ FRIENDS OF ST LAWRENCE'S ~

FOSL funds vital projects such as the restoration of these beautiful Choir Stalls. This is just one of the many gems of St Lawrence's Church, Bigbury.



**GHR**

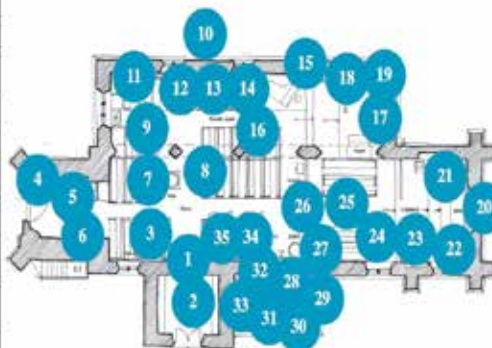
GEORGE H.W. ROSEVEAR  
& COMPANY  
A DIVISION OF HOLBROOK ASSOCIATES

ACCOUNTANCY, TAXATION AND  
COMPANY SECRETARIAL SERVICES

01548 831427

3 MODBURY COURT, 32 CHURCH ST.,  
MODBURY, DEVON, PL21 0QR  
george@holbrookass.com

### Guide to the Gems of St Lawrence's Church, Bigbury



- 1 - 15th Century Nave Doorway
- 2 - First World War Memorial with named Local Combatants
- 3 - List of Rectors since 1274
- 4 - Tower Battlements
- 5 - Belfry with Peal of Six Bells
- 6 - Ringing Chamber with Minstrel's Balustrade
- 7 - Carved Medieval Granite Font
- 8 - Victorian Pews
- 9 - Display of Women's Institute Scrapbook
- 10 - Faced Stone Carvings (on Outer North Wall)
- 11 - Plate with 11th Century Bichebia Domesday Book Entry
- 12 - Plates with detail of 19th Century Church Refurbishment
- 13 - Upper Early Tudor Stained Glass with local Coats of Arms
- 14 - North West Window, 'Peace and War', St Francis and St George
- 15 - North East Window, Jesus's Followers, St Barnabas and St Doctan
- 16 - Barrel-Vaulted Roof, with bosses depicting items of local interest
- 17 - Lady Chapel

- 18 - HMS Bigbury Bay's Ship Bell and Crest
- 19 - British Legion Flag & Royal Navy Ensign
- 20 - Alter Window of The Crucifixion with Lamb of God insert
- 21 - Alter Furniture with Reredos
- 22 - Early Medieval Piscina and Sedilia Granite Carvings
- 23 - Chancel South East Window, 'The Annunciation'
- 24 - Chancel South West Window, 'Presentation of the Infant'
- 25 - Georgian Choir Stalls
- 26 - Carved Tudor Pulpit and Lectern
- 27 - Court Aisle Squire
- 28 - Elizabethan Stocks
- 29 - Simple Weathercock
- 30 - Selection of Old 'King James' Bibles and Religious Publications
- 31 - Large Cast Iron Early Stuart Coat of Arms
- 32 - Unique Tudor 'Bigbury Brasses'
- 33 - The Peace Memorial
- 34 - 17th Century Collection Lists
- 35 - Miscellaneous Militia & Marine Lists

Please join us  
to help maintain  
these precious artefacts.  
www.FOSLBigbury.co.uk



## FRIENDS NEEDED!

Historical St Lawrence's Church relies on the ongoing support of the community to ensure it's here for future generations.

By joining **Friends of St Lawrence's Church (FOSL)**, you will help maintain this priceless building and its remarkable contents.

Please get in touch:  
Contact FOSL Secretary,  
Gill Cook, on 01548 810 156

Or Visit:  
www.FOSLBigbury.co.uk



GS CARPENTRY



Gary Smith  
Carpenter & Joiner

2 Park Cottages  
Bigbury

garysmith118@icloud.com  
07947 343211





# St Lawrence's Church

## St Valentine's Day

This month we celebrate Valentine's Day, a yearly celebration of love.

When we are looking for a life partner it can feel like we are seeking to earn love by wearing the right clothes, being entertaining enough, interesting enough or thin enough. Sometimes growing up we can look to earn love from our parents by trying to gain the right grades, achievement or job. In the work place and sports field we have to earn our place. We can slip into thinking true love has to be won.

But the best type of love to show and receive is unconditional love. I believe that at the heart of the universes is a relationship of love between God the Father, God the Son and God the Holy Spirit. The Christian faith is not just a philosophy, a set of commands and rules and important as they can be or a set of beliefs but an invitation to enter in to the relationship of love at the heart of the universe.

For me George Herbert writing over 400 years ago best summed it up in the first line of one of his poems: *'LOVE bade me welcome;'*

Happy Valentine's Day!

*Matt*

The Revd Matt Rowland



**Modbury Mission Community**

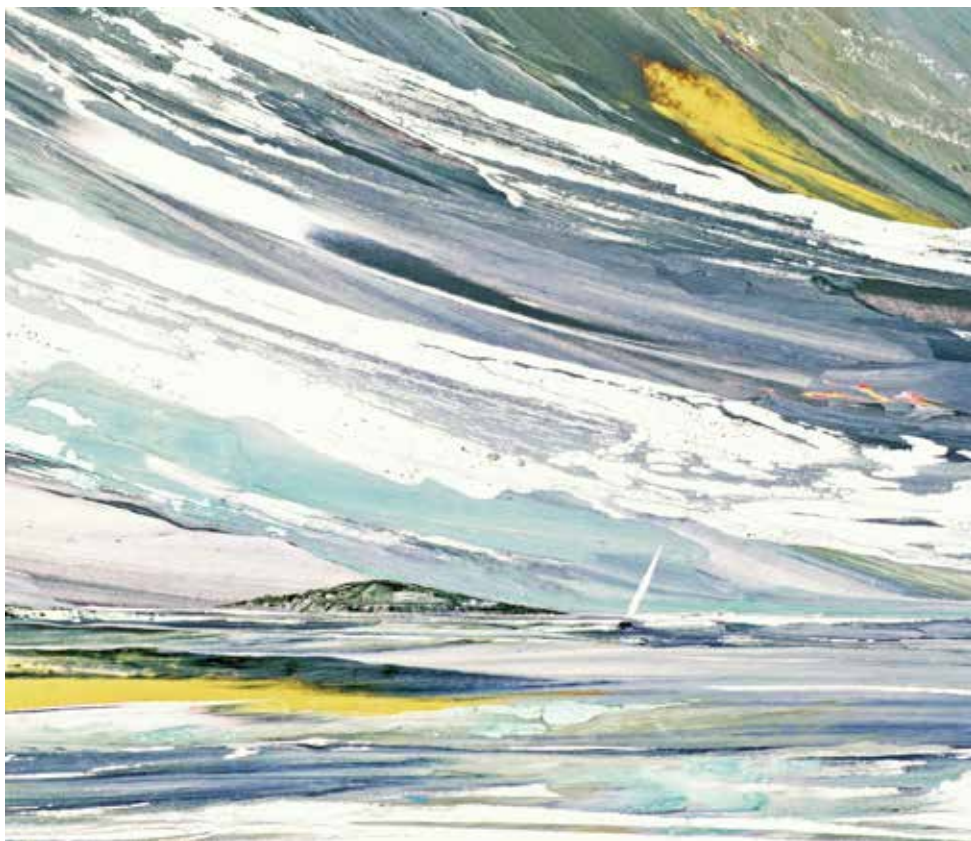
### SUNDAY CHURCH SERVICES IN FEBRUARY AND MARCH

	Aveton Gifford 11.00 am	Bigbury 11.00 am	Kingston 9.30 am	Modbury 9.30 am	Ringmore 9.30 am
February 5 <sup>th</sup>	Sunday Worship	Communion	Village Service	Communion	Communion
February 12 <sup>th</sup>	Sunday Worship	Communion	Sunday Worship	Communion (BCP) (8 am) All Age Service	Sunday Worship
February 19 <sup>th</sup>	Communion	Sunday Worship	Communion (11 am)	Communion	Sunday Worship
February 26 <sup>th</sup>	Communion	Sunday Worship	Sunday Worship	Sunday Worship	Communion
March 5 <sup>th</sup>	Sunday Worship	Village Service	Communion	Communion	Village Service
March 12 <sup>th</sup>	Sunday Worship	Communion	Sunday Worship	Communion (BCP) (8 am) All Age Service	Sunday Worship
March 19 <sup>th</sup>	Sunday Worship	Sunday Worship	Communion (11 am)	Communion	Sunday Worship
March 26 <sup>th</sup>	Communion	Sunday Worship	Sunday Worship	Sunday Worship	Communion

Vicar: The Revd Matt Rowland (830260: every day except (normally) Saturday)  
Readers: Joyce Howitt (07929 117397), Gil Snook (810017), Michael Tagent (810520)

Website: [www.modburyteam.org](http://www.modburyteam.org)





## BURGH ISLAND ARTIST EXPERIENCES

A day with Island Artist – Emma Carter Bromfield. Suitable for all abilities and tailored to bring out your creative juices. Emma will not only help you create a wonderful work of art to take home but will also keep you entertained with stories of her 43-year span of island life, island legends, and life as an artist.

### Small Group Workshops:

9th February 2023  
23rd February 2023  
9th March 2023  
23rd March 2023  
16th October 2023  
2nd November 2023  
27th November 2023  
14th December 2023

£120 per person. Includes coffee, all materials and lunch.

To book your place email:  
[reception@burghisland.com](mailto:reception@burghisland.com)

## A TASTE OF BURGH ISLAND

We're delighted to announce the arrival of a new Burgh Island classic.

The first batch of this carefully curated bespoke London dry gin is infused with delightful citrus notes and is blended beautifully using 17 different botanicals including Rosa Rugosa and Gorse stemmed from our very own tidal island.

Top tip: To make the most of this gin experience, we highly recommend enjoying your tipple as though you were a guest in our iconic Palm Court cocktail bar.

For a truly authentic Burgh Island experience, opt for a pre-dinner Martini, garnished with a beautiful Borage flower, or mix with plenty of ice and a classic tonic water Sip and relax...

For purchase and delivery of this limited edition Gin please visit the link below:

<https://www.northpointdistillery.com/burgh-island-gin>



# BEACH BANTER

## Discovery Surf School ready for the new season!

It's been a pretty bleak start to 2023, with raging storms dominating our weather, but that means it can only get better from now on!

Here at Discovery we've been closed for a couple of months, enjoying some downtime as well as getting ready for the new season. We'll be open again from the beginning of February and open throughout the Half Term for equipment hire and lessons.

With the unpredictable nature of the weather during winter, we will remain flexible about when we open, ensuring that when we run lessons and offer equipment hire the conditions are suitable. We're available via email or phone/text if you have any questions or would like to get something booked in.

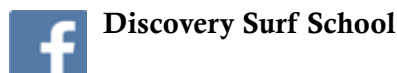
We've got loads to look forward to for 2023, including our ever popular Junior and Mini Grom surf clubs, Summer Surf Courses and Fast Track Courses. We're already looking busy with bookings ahead of the school activity weeks in the summer which will see excited groups of school children joining us for lots of fun at the beach.

We look forward to welcoming all our existing customers and new faces for this season – see you soon!

All the best  
**Annika, Martin and the Discovery Team**



[www.discoverysurf.com](http://www.discoverysurf.com)



*I have recommended Discovery Surf School to a number of friends and colleagues - I think the safety standards and small group sizes make your school stand out*



*The surf day was immense fun! The instructors were excellent at putting people at their ease and even the weather was perfect!*





# PLANET LOCAL

The first **Planet Local Sustainable Festival**, held in Bigbury on the 3rd December, was a huge success says organiser, Lynda Kelly, who brought together 25 uniquely eco-businesses with their sensitively crafted offers to the families of South Hams. More than 200 people came to find out what had inspired these people to do business differently and learn that it's possible to make a living without destroying nature and producing even more emissions and pollution.



As the magical live guitar music warmed the hearts of those who shared the Planet Local experience, seasonal cauliflowers and red cabbage were a welcome parting gift from Mount Folly Farm in Bigbury. People were overheard saying “ This is the future – it's got to be!” We are now busy planning a more sustainable event for 2023 and beyond.

A significant percentage of money spent locally is returned and invested in the local area. A recent Welsh Government study shows that for every £10 spent £3.85 is reinvested within the local community, compared to spending that in a national business where only 25p would be reinvested. So where we choose to place our money puts us in a powerful position and can help us towards a positive and more sustainable future.



At the Sustainable Festival families made eco-Christmas paper, learned about waxed material as food wraps and marvelled at the craftsmanship and skills of the exhibitors and chefs. This fair was very different to other fairs because it built relationships at a different level between exhibitors and their customers. The ripple effect of the many stall-side conversations about the ‘how and why’ of these products will have an on-going impact. Exhibitors displayed more than just their products – they showed they cared for endangered species and wildlife habitat – they wanted to share their rural skills, their knowledge and caring for our planet. They achieved this by the bucket-full!





# PLANET LOCAL



The CEO of Sustainable South Hams, Jane Nichols, urged exhibitors to continue to reach out to communities in South Hams with their messages through the products and services that they have to offer. “We will do all that we can to support your endeavours and want to get the Planet Local Sustainable Festival to more villages and towns in South Hams during 2023.” [www.sussh.org](http://www.sussh.org)



Prospective parliamentary candidate for Totnes, Caroline Voaden, (Liberal Democrat) was one of the many who came to support Planet Local. “Having run my own business in Totnes, I appreciate the endless hours, the passion and the dedication that goes into sustaining a small businesses, especially in difficult times like this.” she revealed. “We need to think more creatively about what more we can do at the national and local level to support local homegrown businesses so that they don’t succumb to the online giants and the supermarkets. Policy makers can and need to do more to help producers and entrepreneurs to survive and thrive”.

Photos: Lynda Kelly





PILCHARD INN

— BURGH ISLAND —  
1536

*Quenching the Island's thirst for over 700 years*



The Pilchard Inn is open daily between 10:30-22:00.  
The Pilchard Inn will offer a tasty selection of food and drinks  
Wednesday-Sunday from 12:00-16:00.

Dinner reservations are available to book for Wednesday-Sunday  
between 18:30-20:30. Pre bookings required.

Pets welcome!  
T: 01548 810514  
Pilchard Inn, Burgh Island, TQ7 4BG

## COCKTAIL HOUR



### ~ BURGHGRONI ~

30ml Burgh Island Gin  
30ml Campari  
30ml Suze (citrus liquor)  
Dash of grapefruit bitters

Combine all the ingredients  
together and shake with ice.

Once shaken, pour over ice in  
a whiskey tumbler glass and  
garnish with grapefruit peel.

Thank you to Burgh Island Hotel  
for this cocktail recipe.

## CHAPMAN CONTRACTORS LTD SEASONED LOGS

sold by dumpy bag, netted or bulk deliveries

NETTED KINDLING AVAILABLE  
HOUSE COAL AND SMOKELESS NUGGETS

- TREE AND HEDGE CARE • LAWN MOWING
- FENCING AND GARDEN WORK
- FULLY INSURED • 17 YEARS EXPERIENCE

TIMBER PROCESSOR, CHIPPER AND  
KINDLING MACHINE FOR HIRE ON OR OFF SITE

CONTACT NEIL CHAPMAN  
01548 810016/07718 722680



### Herb Heaven Devon Herbal Teas from Seed To Cup

Low impact, sustainable and  
innovative farming, providing fresh  
herb plants and cut herbs that  
support health and taste delicious.

A healthy product  
for a healthier planet.

[www.herbheavendevon.co.uk](http://www.herbheavendevon.co.uk)

# BIGBURY KITCHEN

## SAAG ALOO COTTAGE PIE

I have borrowed this recipe from Anna Jones, a creative and brilliant vegetarian cook. We are not vegetarian in our house, but I like to cook veggie recipes when I can (get away with it!) and this one is a favourite for many reasons. I can use locally sourced ingredients, it's super tasty and satisfying and my carnivorous family actually enjoy it! You can easily substitute ingredients, for example, I've not always had spinach, so have used chard or even foraged sea beet before instead. You can make it as hot as you like and it's great to pre make, so you can go out and pop it in the oven when you come home.

For the rajma masala base:

- 2 tbsp ghee (or coconut oil)
- 1 onion, finely chopped
- 4 garlic cloves, finely chopped
- 2in peeled, copped ginger
- 1 green chilli, finely chopped
- ½ tsp ground turmeric
- ½ tsp chilli powder
- 1 tsp garam masala
- 1 tsp cumin seeds
- 2 x 400g tins pinto or borlotti beans
- 1 x 400g tin chopped tomatoes

For the saag aloo topping:

- 2lb 4 oz small new or red skin potatoes (large ones cut in half)
- 1lb 2oz cauliflower, broken into small florets, roughly chopped
- 1 ¾oz ghee (or unsalted butter)
- 1 tsp cumin seeds
- 1 tbsp black mustard seeds
- 1 tsp ground turmeric
- A good couple of handfuls of baby spinach, washed

Firstly make the rajma masala base - heat the ghee or coconut oil in a large pan. Add the onion and cook for 10 minutes over a medium heat, or until soft and sweet. Add the garlic, ginger and chilli and cook for another 5 minutes. Add the spices to the pan and stir for a couple of minutes until it all smells fragrant.

Stir in the tinned beans and their liquid, the tomatoes and a tin of water swilling out the tomato juices. Simmer for 25 minutes until the tomatoes are broken and you have a thick, gravy.

Preheat the oven to 180C fan. Put the potatoes into a large pan, leaving enough space to add the cauliflower later. Cover with boiling water, add half a tablespoon of salt and bring to the boil. Cook for 15 minutes, or until the potatoes are almost cooked, then add the cauliflower and cook for a further 6 minutes. Drain well.

Put the empty pan back on the heat, add 1 tablespoon of ghee/coconut oil, then add the cumin seeds, mustard seeds and turmeric. Cook for 1 minute, then add a good glug of water, the potatoes, cauliflower and half of the spinach. Stir to wilt the spinach and use the back of a spoon to crush the potatoes a little.

Spoon the rajma masala mixture into a large baking dish. Top with the potato, cauliflower and spinach mixture. Melt the remaining ghee and drizzle over the top of the pie. Bake for 30-40 minutes, or until the filling is bubbling and the top is brown and crunchy in places.

Annika Connolly

<https://annajones.co.uk>



The Shack Crew look forward to welcoming you this winter for some cracking local seafood!

50% off all of our Catch Of The Day fish until 13th February!

Quote 'Shuck Yeah' to one of the team to receive this offer.  
(Offer subject to availability)

We are open Friday / Saturday / Sunday for lunch and Friday / Saturday for dinner.

Please visit our website to book a table  
[www.oystershack.co.uk](http://www.oystershack.co.uk)





# BIGBURY NET ZERO

## Householder Renewable Energy

Many households in the Charterlands Ward are reliant on oil or LPG-fuelled space heating and hot water provision. This is why we have above average carbon footprints per household. <https://impact-tool.org.uk/>

Fuel costs are rocketing. Reliance on fossil fuels is not future-proof because the government will be bringing in legislation to curtail its use so that the UK can comply with international agreements to reduce fossil fuel consumption. From our comfortable lifestyles in an Area of Outstanding Natural Beauty our emissions already cause severe life-threatening weather catastrophes in other parts of the world. If we want to redress this injustice and the impact of global warming on the next generation we should try to move towards more electricity – either by producing some of our own renewable energy or switching supplier to a green energy supply as soon as possible (or both).

A fast reduction in carbon emission in the immediate few years is needed if we are to keep global warming to 1.5 degrees C (above pre-industrial levels) by 2030 and play our part on the global mission to limit the environmental damage for future generation and reverse the loss of Nature. Global warming is already at 1 degree C. It may sound like a smallish figure but it will have catastrophic effect on life. The Met Office's State of the UK Climate report for 2021 shows the ten hottest years in the UK since 1884 have all happened since 2002. The Climate is changing fast. <https://www.metoffice.gov.uk/weather/climate-change/what-is-climate-change>

If you have an oil-fired or gas-fired boiler, you may be eligible for a £5,000 grant from the government to upgrade and convert your boiler system to use electricity.

This government incentive supports households to purchase an air source heat pump and have the modifications made to your boiler to allow your water system to accept heat from this new source. The average cost of these works is from £7,000 to £12,000 (without the grant of £5,000). Check this website to find out if your home is eligible.

If you need help to do this contact [info@bigburynetzero.org](mailto:info@bigburynetzero.org) <https://www.gov.uk/apply-boiler-upgrade-scheme> To obtain a grant you must use an MSC Certified installer. You can find a local installer by entering your postcode in this website - <https://mcs-certified.com/find-an-installer>



Please support the work of Bigbury Net Zero  
TRIODOS BANK : Bigbury Net Zero:  
Acc No: 21857385 Sort Code: 16-58-10  
or a cheque payable to "Bigbury Net Zero" to  
The Secretary Bigbury Net Zero, Long Easton,  
Easton Bigbury TQ7 4AN

**JOIN BIGBURY Carbon savers CLUB**

Easy ways to save carbon and money  
Carbon footprints, step by step  
How groups can save more carbon together

**BIGBURY NET ZERO**  
[info@bigburynetzero.org](mailto:info@bigburynetzero.org)

Monthly Meetings  
the first Wednesday of every month  
7.00 pm to 8.00 pm  
Memorial Hall, St Ann's Chapel

**EVERYONE WELCOME**  
Bigbury, Ringmore, Kingston, Aveston Gifford, Modbury

**Main Topic Programme**  
2nd November - Intro to carbon footprints  
7th December - Home energy  
4th January - Shopping  
1st February - Quality of life  
1st March - Money  
5th April - Farming  
3rd May - Holidays  
7th June - Transport  
5th July - Carbon Offsets  
2nd August - Food

15-minute video talks on the topic from carbon footprint expert  
Mukti Mitchell, founder of Carbon Savvy.  
Information sheets, practical exercises.  
Discussions about how neighbours & friends can work together to  
share more and save more - and enjoy our community spirit.

## Air source heat pumps

An air source heat pump is externally mounted on the outside of your home. No plant room is needed. Modern units are not very big or noisy. It extracts even small amounts of heat from the outside air and uses it to heat up water in the boiler in your house. It works more efficiently when the outside temperatures are lower. The hot water it produces can be used for your taps/showers etc and also fed through your radiators or underfloor heating network.

The air source heat pump needs a supply of electricity which could be powered from the normal grid or from solar panels on your roof. Every house in the UK is allowed by the National Grid to connect domestic renewable energy equipment to the low voltage grid of up to 3.7 kW which is sufficient for about 12 solar panels or an air source heat pump. They can be installed and the National Grid is informed afterwards. This size of solar array is considered 'permitted development' by South Hams District Council and planning permission is not required (unless the building is 'listed'). If you only use an MSC certified installer, they will be able to advise whether you need permission from the National Grid to connect the size of equipment you have in mind.

Air Source is different from a fossil fuel central heating system because it provides a 'background' low level heating and can't be 'turned up' quickly to provide high levels of heat. Your installer will advise you whether you need to upgrade any of your radiators to triple panel radiators to optimise the radiation of heat in important rooms in daily use.

# BIGBURY NET ZERO

## Insulation first

It is very important that you insulate your home well before you invest in an air source heat pump because it is a low level heat source and you will not get the full benefit without good insulation.

The average heat loss from an uninsulated home is: drafts (30%), walls (25%), windows (20%), floor (15%), loft (10%). Since there could be a long waiting list for the installation, this provides you with some time to get the insulation sorted out.

You can still borrow the thermal imaging camera from Bigbury Net Zero if you want to identify the key points in your home where you are losing heat and prioritise investment. Contact [henry.wainwright52@gmail.com](mailto:henry.wainwright52@gmail.com)

01548 810991.

There are government grants available for some households to improve their loft insulation or provide cavity wall insulation. Contact the Local Energy Advice Partnership for bespoke advice on what you can do. You may be eligible for a home visit as well as grants. <https://applyforleap.org.uk/how-leap-works>  
0800 060 7567

- Wall and floor insulation are more costly and the last two areas to consider. But with these fitted old homes can save up to 80% of heat loss, which means heating bills cut to just 20%.
- Loft insulation requires careful pipe-lagging to avoid burst pipes; this is because an insulated loft is no longer kept warm by heat coming up from the rooms below.
- Good draught-proofing will keep you warm, but once fitted you need to keep your home ventilated by opening windows regularly on nice days - or you can fit mechanical ventilation.
- For most homes, external wall insulation is better than internal as it avoids the risk of trapping condensation between the wall and insulation material.
- Hung floors can be lifted and insulation placed under floorboards. Solid floors can be excavated, fitted with a damp-proof course and insulated before replacing floorboards.
- Even if your home is listed it can be insulated. Advanced secondary glazing allows your windows to open as usual and is virtually invisible. External wall insulation can be approved for rendered walls, otherwise fit internal wall insulation. Check plans with your conservation officer.

## Retro-fit

Retro-fit simply means that the above installations are installed after the house is built. If your household income of all residents is below £30,000 per year you may be eligible for grant support from Cosy Devon.

<https://www.cosydevon.com/am-i-eligible>

Remember to use an installer with an MSC Certificate.



## Compost questionnaire results

Thank you to the 27 people who completed the Compost Questionnaire. If you have not yet done this - please contact [info@bigburynetzero.org](mailto:info@bigburynetzero.org) for another questionnaire sheet. Please drop off your questionnaires at Holywell Stores. If you are a contract gardener, please contact Bigbury Net Zero directly to discuss your possible involvement in a community compost facility serving local villages. Key messages:

- 66% of household respondents would value a community compost facility;
- 8 householders offered to provide some volunteer support if needed on a rota basis;
- If there were not enough volunteers 40% of householders agreed that a membership fee would be appropriate to pay for staffing;
- 6 households out of 27 used a garden contractor;
- 9 households were interested in learning how to carry out their composting better.

One suggestion was made - "Can a field be located that would allow residents of Bigbury, Ringmore and Kingston parishes to be used jointly - preferably close to main road through to Harraton Cross for ease of access rather than off a single track lane. A state for three parishes should make the project viable and provide sufficient volunteers overall. If there are any land-owners who would like to discuss the SHDC grant offer (£7,500) further - please contact: [info@bigburynetzero.org](mailto:info@bigburynetzero.org)





## Seedy Sunday

It's that time of year again! All the squirrels are checking what's left of their overwintered nuts and seeds and begin planning for the spring! Have you had the problem that there are always so many more seeds in a packet than you will ever need to use? If you did make 200 cabbage plants...what on earth would you do with them? Dust off those seed packets and make a better plan for 2023.

Lynda Kelly has organised a Seedy Sunday gathering at the Pickwick on Sunday 5th February (see poster). Ashley will be serving bacon baps for your brunch and all you need to do is ferret out last year's seeds and bring the 'in date' packets to the pub to share with your new Bigbury Gardener buddies. Make some new friends, share your experience, ask advice, solve problems and.....swap some of your seeds. Maybe you can even offer to grow all the cabbage transplants that people might need and bring them to share at the next 'Seedling Sunday' later in March/April. Please feel warmly invited to come and chat with other green-fingered gardeners – and make a plan. See you there?

## Fruit Forests

A 'Fruit Forest' is a small area of mixed indigenous wild type trees and bushes which bear fruits over the autumn and winter months...and the summer too.



Spindle, *Euonymus europaeus* (above), has the most magical pink fruits with bright orange seeds. Although they are poisonous for humans, the fleshy seed coverings are tasty morsels full of energy and much loved by robins, blackbirds and blackcaps.

Berries and fruits provide a scrumptious larder for the wildlife of Bigbury and helps to keep them alive, particularly if they 'wake up' over winter because the winters are becoming warmer. There will be something for them to eat! If you have bushes and trees in your hedges and hedgerows which bear berries, please do not cut back your hedge until after the winter, so that they still provide winter food for our wildlife. Remember though that any hedge-cutting needs to take place before 1st March so that nesting birds are not disturbed. Hedge cutting is then prohibited until 31st July.

There is still time this winter to plant non-expensive bareroot fruit trees and berried bushes in your garden and any spare corner of a field. They are easy to plant. Just use a deep plated spade and push it into the ground to make a slit. Wiggle the blade to and fro to widen the opening. Ensure that the slit is deep enough for the bare root to slip into place without having to bend the root. Try to plant the little tree to the depth it was probably grown in the nursery. Look for a difference in the colour and texture of the stem to identify this level. Then push the sides of the soil slit together with the heel of your wellie boot. There is a huge menu to choose from: rowan, crab apple, holly, guelder rose, hawthorn, blackthorn, spindle, blackberry, honeysuckle, wild pear, wild cherry ..... Enjoy! Even if it's just one bush, tree or climber in your garden, let's all help to rebuild habitats and food stores for Bigbury Nature. Enjoy your gardening!

**Louise Wainwright**



# Avon Mill

## Café • Garden Centre • Shops

Cream Teas • Crafts • Boutique  
Florist • Dogs welcome  
Woodland walks • Parking  
Open 7 Days

Loddiswell • Kingsbridge • TQ7 4DD 01548 550338  
[www.avonmill.com](http://www.avonmill.com)



Was your skiing holiday cancelled due to lack of snow this winter? It's the second week of January as I write this Wildlife note. The winter months in Bigbury have been very wet, windy and exceptionally mild. Normally the cold winter months are when insects and wildlife slow down and some even hibernate. But things were different this winter. Warmer winter weather stimulates the growth of plants, body temperatures rise and hearts beat faster. Hibernating animals can wake up and look for food, when it is not in abundance. This unusual behaviour can pose risks to their survival. The warmest winter months on record have been recorded throughout Europe – exceptional temperatures 18 to 25 deg C in Dec/Jan. Great biking weather or a fun time on the beach – but the other side of the coin is not a pretty picture.

Heads Up! The Climate is changing rapidly. Nature needs our help to flourish and we need Nature to help us flourish. It is our carbon emissions which create to the dangerous levels of global warming that are tipping the balance. Most of these emissions in Bigbury come from oil-fired home heating, lack of public transport and reliance of fossil fuel-driven cars. (ref [www.impact-tool.org.uk](http://www.impact-tool.org.uk)). (See BNZ feature on Community-owned renewable energy).

Even though we are in trouble, Nature can come back if we give it a chance. We all want to live, from the dormice and hedgehogs to our grandchildren. The South Devon AONB 'Life on the Edge' Project reported the sighting of the Brown-banded Carder Bee at Prawle Point last summer which had not been seen since 1978.



**Carder Bee**

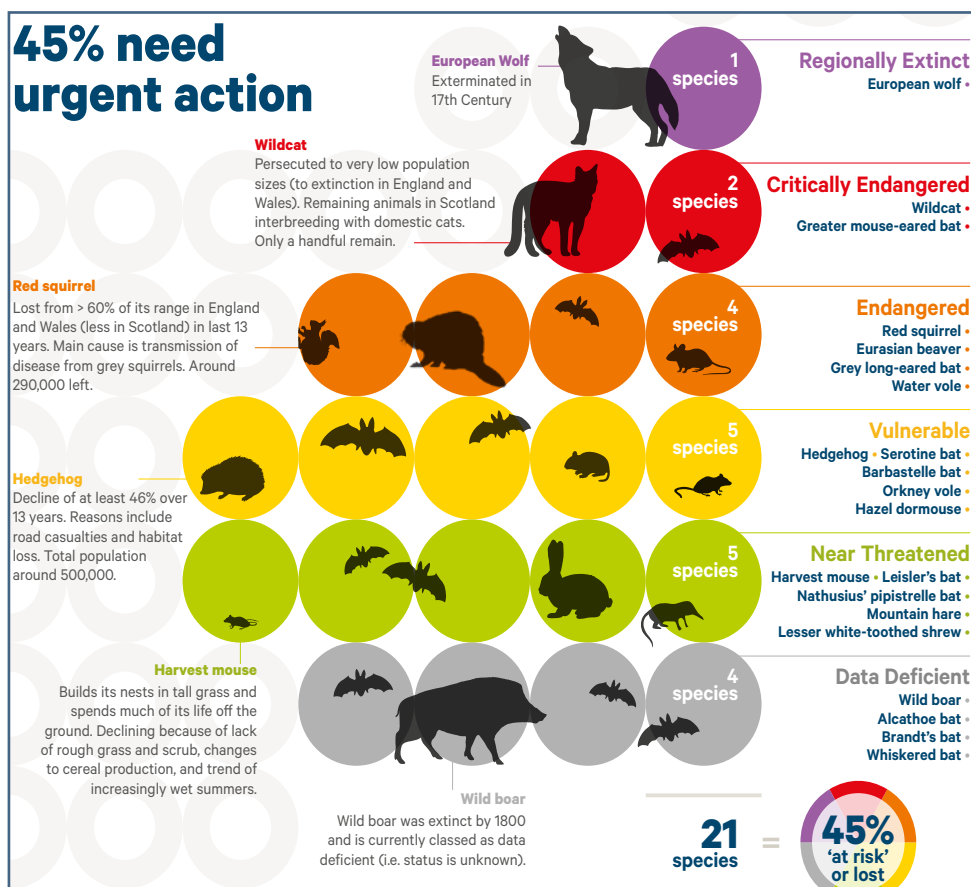
The project, funded by the National Lottery heritage Fund, aims to restore habitat along the South Devon coastline to save 30 species of invertebrates, such as the Long-Horned Bee and the Moon Spider, and many rare or declining plant species such as Goldilocks Aster. (ref. <https://www.southdevonaonb.org.uk/projects/life-on-the-edge/>)

The 'other' annual COP (COP 15) was held in Montreal in December 2023. This is the COP series where national governments review the state of Nature. Governments adopted the Kunming-Montreal Agreement and the commitment to restore at least 30% of degraded terrestrial, inland water, and coastal and marine ecosystems by 2030. They stated – "Accelerating the speed and scale of nature restoration is crucial to stopping biodiversity loss, mitigating climate change, and improving people's lives". But the UK Wildlife Trusts, RSPB and World Wildlife Fund strongly criticise the failure of governments to hold back from commitment to also restore lost habitat.

The Red List for Britain's Mammals shows that 1 in 4 species are threatened with extinction and 45% need urgent action.

Have we got enough diversity in wildlife habitat in Bigbury? The parish comprises 1,167 hectares. Could we do more, in time to make a difference? Landowners, including gardeners might like to consider opportunities to proactively identify areas where they could plant a copse, plant natural woodland along river banks, replace fences with species rich hedgerows, develop species-rich meadows with DWT Avon Valley Project, manage grass verges in a wildlife sympathetic way and more. A small group of people are looking at the old Tithe Maps of Bigbury to see how the landscape has changed over the years so that we have some benchmark for any emerging Bigbury Nature Restoration Project. If you would like to take part in this or have old maps that or information to share – please get in touch – [info@bigburynetzero.org](mailto:info@bigburynetzero.org) Walking down the quiet country lanes in Bigbury, it's easy to believe that all is well. The finish line is set at 2030.... That's only seven short years away from now.

**Louise Wainwright**



@MammalSociety  
@Mammal\_Society

For more information, visit [mammal.org.uk](http://mammal.org.uk)



## BUSINESS MATTERS

We are pleased to announce some exciting opportunities for businesses to access free help and support. The Heart of the South West Growth Hub are inviting businesses to find out more about the THRIVE service and an invitation to attend a free Business Resilience event.

Self-employed and small to medium enterprises (SMEs) in Devon can benefit from a range of business training and support initiatives including THRIVE.

With recent rises in the cost of living and economic pressures mounting, small businesses, micros and sole traders are urged to take advantage of the business support available to them.

THRIVE offers a free diagnostic and training service, with up to 12 hours of tailor-made support that will enable businesses to improve and grow. Enrolled businesses will be able to receive a one-to-one diagnostic and attend webinars around specialist topics such as digital skills, finance, marketing, HR and business planning.

A key element of the service is its digital support which looks at how businesses

can improve their online presence and digital skills. Following an initial discussion, businesses will be signposted to the most relevant sources of support and advice from one of Thrive's support providers.

For more details and to apply for Thrive, please visit:

[www.heartofswgrowthhub.co.uk/thrive](http://www.heartofswgrowthhub.co.uk/thrive)



Fully funded event with guest speakers talking about business resilience, a free networking lunch, Business Health Check & workshop on "How to Create a Successful Funding Application".

Join us at Plymouth Science Park | 8th February | 10am to 3.30pm.

The Heart of the South West Growth Hub Service for All is receiving up to £781,965 of funding from the England European Regional Development Fund (ERDF). The accountable body for this programme is Devon County Council.



Book now: <https://PlymouthBusinessResilienceEvent.eventbrite.co.uk>

Local businesses are also invited to attend a Free Business Resilience Event on Wednesday 8th February at Plymouth Science Park, Davy Road, Plymouth.

The event, hosted by THRIVE in conjunction with Plymouth City Council and Devon and Plymouth Chamber of Commerce aims to bring together businesses from across the region in order to provide practical support and guidance in response to the recent rises in the cost of living. A free networking lunch will also be provided.

Business Owners and Managers looking to boost their finances can discover more about the grant funding available to them with a workshop on "How to Create a Successful Funding Application" aimed at raising their chances of making a successful application.

There will be a Business Health Check and they will also hear from a panel of expert guest speakers including Plymouth City Council's Economic Development team.

Booking is essential as tickets are limited: <https://PlymouthBusinessResilienceEvent.eventbrite.co.uk>

Wishing all of our businesses a healthy, happy and prosperous 2023.

**Nancy Singleton, Business Editor**







## ~THREADS BOUTIQUE~

My name is Fiona and I own Threads Boutique, Ladies clothing shop at Avon Mill Garden Centre in Loddiswell.

Previously, when working in fashion admin, my brain tapped into the fact that there were sample clothing collections racking up but not being sold. Near the end of my contract, I asked to see how many items of clothing they had stored and to my astonishment, there was literally a barn full!!



I decided to take a leap of faith and agreed to buy the lot with the intention of hosting 'pop up shops' and fashion shows for local charities. The company agreed on a payment plan and I very quickly started researching venues I could 'set up shop' in for a day or two, sometimes a week at a time. I made posters and displayed them a week in advance of the sales / shows, advertised on social media and took peoples email addresses who attended the sales so that I could let them know when I was next hosting an event. The clothes were sold at hugely discounted prices but I had limited sizes and every item was different, no two the same.



I asked the owner at Avon Mill garden centre if I could set up shop in the flat above the cafe for a week and see how it went. The staff were extremely helpful and I popped a dressed mannequin in the cafe with a note around her neck inviting people to pop up and see me to browse the clothes. Before I knew it a week had passed and I had lots of new customers. I returned there for a period of 2 weeks a few months later and the same thing happened. Success!!

Avon Mill Garden Centre has 3 separate barns, one of which hosted the Deli. The owner had decided to move the content of the Deli to another barn, therefore making one available to rent. I was approached by the owner and after crunching some numbers, I decided to take another leap of faith. I designed the layout of the shop, laid rugs and made a changing room, and my opening day was 4th March 2013. It was a huge success and I will never forget the kindness and support from everyone who helped and came to shop. The feeling was overwhelming and I was so incredibly proud of my achievement.

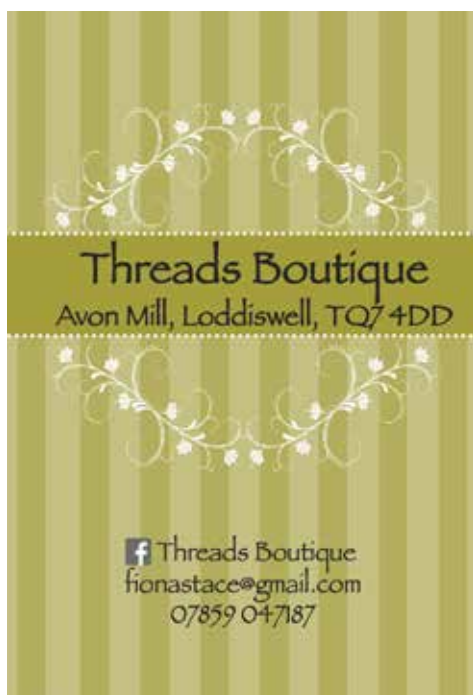
It started with the samples, but as time went on, I managed to find labels who had the same interests in keeping a low carbon footprint as myself, and put in some orders so that I could have more sizes therefore cater for more people. My shop currently supplies Nomads Fairtrade Clothing, Lily & Me, Orientique and Doris and Dude bamboo socks. The labels will be changing but I will still make sure that the clothing is leaning towards sustainability and affordability. I supply sizes 8-22, the national average being size 14-16. My clothes are classed as 'every day wear' and comfortable and I pride myself in choosing 'something for everyone'.

My clients range from young adults to 100 years and every one of them is appreciated from the bottom of my heart.

I have 2 ladies, Helen and Charlotte, who work the weekends for me as we are open 7 days a week, 11am to 4pm. My wonderful Mum also helps me out sometimes. I would like to thank Cheryl, who owns the garden centre, for the opportunity to be a more independent woman and who has supported me all the way. Its such a beautiful place to work. Being surrounded by flowers and nature and having such a wonderful cafe here is a bonus!! In the spring I come in early and walk along the river before work, which sets me up nicely for the day.

I love what I do. My goal is to make women feel more beautiful and more comfortable with their bodies by choosing the right shape and colours in a garment. I am always happy to help and guide and am always honest! Negative words are not allowed in my shop, each and every one of my customers is beautiful. Please do come along and see us and have a browse. We will be very happy to see you!

**Fiona Stace**







## Nkuku Lifestyle Store & Café

*A unique and inspiring space*

Embrace the season with sustainably made homeware, furniture and accessories. From statement lighting to luxurious sofas, handwoven textiles and beautiful tableware, our pieces celebrate timeless design and traditional skills.

Across the courtyard in our furniture showroom, you'll find coffee tables, luxury leather loungers and bar stools in a variety of styles to suit any home. Make a morning or afternoon of it by visiting our café, which serves wood-roasted coffee, teas and delicious seasonal food.

### VISIT US

Brockhill Barns, Harbertonford  
Tornes, Devon TQ9 7PS  
Tel: 01803 465365

Free parking. Free Wi-Fi.

### NEW OPENING HOURS

Monday - Saturday | 9:30am - 5pm  
Sunday | 10am - 4pm

*Café closes one hour before the store*

Discover more at [NKUKU.COM](http://NKUKU.COM)



HOMEWARE · FURNITURE · LIGHTING · CAFÉ



## THIS COW CAN DO THIS

- Adverts • Artwork • Banners • Branding
- Business Cards / Stationery
- Digital Art • Flyers • Invitations • Labels
- Leaflets • Logo Design • Menus • Posters
- Signs • T-Shirts... and more!

Find out what the moo can do for you!

☎ 07856 550 239

✉ [devoncowone@gmail.com](mailto:devoncowone@gmail.com)

📱 [devoncow graphic design](https://www.facebook.com/devoncowgraphicdesign)

### Challon's Combe Farm



Local, organic, pasture-fed,  
yoghurt, milk & cream  
in glass (and plastic)

from Holywell Stores  
and other local shops,  
or delivered to your door.

01548 550044

[challonscombeorganics@gmail.com](mailto:challonscombeorganics@gmail.com)

## Early Bird - Get into Golf offer

Bigbury Golf Club



**Complete Beginner Group Sessions**  
**5 Week Course (60 minute sessions) £50.00**

For more information email [golfshop@bigburygolfclub.co.uk](mailto:golfshop@bigburygolfclub.co.uk) or call 01548 810 557



### Challon's Combe

**FRESH MEAT AVAILABLE**

Beef | Pork | Lamb | Veal

**FREE LOCAL DELIVERY ON LARGE ORDERS**  
**- SO FILL YOUR FREEZER NOW!**

**CUT AND PACKAGED TO YOUR REQUIREMENTS**  
Call Andrew on 07784 427790 or 01548 550044  
or email: [challonscombemeat@gmail.com](mailto:challonscombemeat@gmail.com)  
with your orders, queries or for a price list.





# FARM GATE

## CHALLON'S COMBE ORGANICS

Challon's Combe is a family run, certified organic dairy farm in bigbury, in the North East corner of the parish and our family has been farming here since 1958. We milk over 60 mainly British Friesian pasture fed cows and keep a dozen organic sows and a flock of sheep.

We pasteurise the milk in our on farm dairy for bottling, alongside making yoghurt and cream to sell in local independent shops, online and via our morning doorstep delivery rounds. We don't feed our cattle any cereals, maize or soya - they eat only grazed grass and conserved forage during the winter. This gives the meat and milk produced a delicious depth of flavour and avoids the environmental impacts of imported ingredients used to make commercial concentrate feeds.

The cattle are all in their winter accommodation. We usually house the herd from early December until late February to avoid causing too much damage to the ground and also to shelter them from the worst of the winter weather. We calve all year round to ensure a constant supply of milk and calves are reared by the cows until they are weaned at 6 - 8 months old. The female calves (heifers) are reared as replacements to join the milking herd while the bull calves are also kept on farm to be finished at around 3 years old to be sold through our butchers shop. The beef breeds we use are currently Aberdeen Angus and Hereford and we have just started using Shorthorn too.



The pigs are a mixture of Oxford Sandy and Black or Berkshires crossed with a British Lop boar. They are kept outside all year round with arcs for shelter and are moved onto fresh ground about every six months to avoid a build up of parasites and allow for fresh grazing and foraging areas. They are currently being fed fodderbeet (a root crop similar to sugar beet but used for stock feed) and locally grown organic wheat, barley or oats. They also get any waste milk from the dairy which is always appreciated! The young pigs are slow grown in social groups and mostly sold through the shop or used for hog roasts, more during the summer months!



We have 45 ewes which we run as two flocks and we have just started converting one flock to organic. The sheep are a mixture of breeds and this year we have purchased a Kerry hill ram. We wanted to use a native breed that would do well on grass. The Kerry hill breed originated near Powys in Wales. The ewes are due to start lambing in early April this year to take advantage of the (hopefully!) better weather and spring flush of grass. The lambs will also be eventually sold through our butchers shop in Kingsbridge.

At this time of year there is a lot of routine work to do every day, including milking, feeding, mucking out and bedding up and checking on stock. Then there is the milk to bottle and deliver and the butchers shop to run! When we get a chance the winter months are when we do jobs like hedgelaying and fence maintenance. We don't trim the tops of most of our hedgerows to provide a vibrant habitat for wildlife and make shelter/shade for the livestock too. Lately we have enjoyed watching large flocks of goldfinches eating the weed seeds in the fodderbeet field and since Christmas we have regularly seen half a dozen egrets feeding in some of the grassland.







Luscombe Maye

Since 1873

We offer a **bespoke** and **personal** marketing strategy for your home.

For a free and confidential, no obligation market appraisal,  
please call or email us now.



Modbury 01548 830831

[modbury@luscombemaye.com](mailto:modbury@luscombemaye.com)

#### THANK YOU

To all of our advertisers  
whose support enables  
Bigbury News to be produced  
and published six times  
a year. We couldn't do it  
without you!



**BSS**  
BUSINESS SELF STORAGE

#### NEED LOCAL STORAGE?

07515 994542 / 07970 526048

- » Grade A Storage Containers
- » Anti-condensate lining
- » Easy Access
- » Customer Parking
- » Secure
- » Owners On-site

HIGHER EASTON FARM  
Stuart & Hazel Marshall TQ7 4HQ  
[bigburyselfstorage@outlook.com](mailto:bigburyselfstorage@outlook.com)

## Home Buddies

*Premier Second Home Care*

**Thinking of letting your holiday home?**

*Free consultation service and letting advice*

- Full changeovers • Laundry
- Property management and key holding • Maintenance and gardening
- Bespoke and flexible approach • Advice on which agents to use

### Are you 100% happy with your changeover/cleaning team?

*We are a small family business with many clients in Bigbury On Sea and surrounding areas. We are based in Ringmore... minutes away from Bigbury!*

*Please call Lesley for a friendly chat...*

*mobile: 07836 329188 or email: [harwood247@hotmail.com](mailto:harwood247@hotmail.com)*





## Bigbury Centenary Year Captains: Phil, Karen and Dave

Bigbury was blessed with glorious sunshine for the start of its Centenary Year and I'm hoping this is a good omen for our action and fun packed very special anniversary year. And this sunshine was most welcomed not only by the Captains but also by the 100 or so members who came along on the 2nd January to join in with the fun.

To start the day three long standing members hoisted the new Bigbury Centenary Flag; Vanda Irish, Alan Germain and Peter Rutherford were all delighted to be asked to perform this task, which they undertook with great aplomb.

Karen Graddon, Dave Graddon and Phil Jolly the three Centenary Captains so enjoyed walking in the sunshine to the first Tee to play their "Drive In" shots. As is traditional at Bigbury there followed an eleven hole competition with the new Captains leading the field out. With a good entry of more than 50 players, the competition proved to be very competitive; some players were sporting their new Centenary Logo merchandise.

The winners of this first competition of the Centenary Year were Lin and Mike Parker who pipped Mick McNulty and Trevor Robinson on countback. These four golfers were playing together and it became a match-play situation when they realised on the 10th tee that their scores were tied on a very good 27 points. This led to a very nervy finish for them but they enjoyed the game and the fantastic weather, as did all the players in the competition.

The next Centenary Year event will take place on the 100th day of the 100th year, which is Easter Monday 10th April. This is to be a competition for the Mike Willacy Trophy, which is being introduced by Bigbury Golf Club in memory of the late Mike Willacy.

Since the 1930's when his grandparents moved from Plymouth to Bigbury-on-Sea the family have contributed so much to Bigbury Golf Club. Mike first learnt to play golf as a 10-year-old in 1943 when the course comprised 11 holes, today's first 4 and the back 7; the 5th, 8th, 9th and 11th were under potatoes as part of the wartime effort.

In 1950 Mike was one of six juniors and won his first and only prize, the Bigbury Junior Cup. Having learnt to drive an old tractor at Folly Farm, with his father's permission Mike drove the club's old Fordson tractor to cut the fairways on Friday afternoons after school.

His grandfather, Jim, became the first post-war Captain in 1945 and was a Board member for some 30 years. Jim's wife, Mike's grandmother, Marjorie, was Lady Captain in 1950 and was one of the earliest junior organisers.

Like his grandmother, Mike made a huge contribution to junior golf at Bigbury by organising bi-annual Junior Tours to the Continent in the early 2000's. Over 150 players, parents and officials took part and priceless memories were made!

Also his four sons learnt to play golf at Bigbury and held Junior positions at Bigbury, as well as the County. Mike was appointed Chairman of the Club in April 2007, a position he held for three and a half years. And in 2012 Mike was awarded honorary life membership, again like his grandmother who was appointed an honorary life member in 1994 at the age of 87.

Thanks must be recorded to James Willacy for his contribution to this report. James says "The family are humbled and honoured that the club have decided to name a trophy after Dad as part of the centenary celebrations – he would be immensely proud".

**Marlene Johnson**





Get yourself

'FIT TO GO'

with JILL's local classes

at Bigbury Memorial Hall:

Mondays: PILATES 9.30 - 10.30

STRONG & STEADY 10.50 - 11.30 + tea

at MARS Pavilion, Modbury: -

Thursdays: STRONG & STEADY 11.30 - 12.15 + tea

Equipment provided. New or not to exercise, all welcome in friendly, mixed, pay-as-you-go classes!

Experienced & qualified instructor.

Strengthen muscles, maintain balance, stretch out - also ideal to rebuild fitness after illness or covid!

For more information, please contact JILL on 01548 810651 or [gubbinsjill@gmail.com](mailto:gubbinsjill@gmail.com)

**FITNESS SO CLOSE TO HOME!**

PLEASE CONTACT JILL BEFORE ATTENDING IF NEW & INTERESTED IN JOINING ANY SESSIONS. THANK YOU!

Please note: no classes at all running between Fridays 10<sup>th</sup> & 24<sup>th</sup> February,

# SURF KAYAK SUP

Bigbury on-Sea & Challoborough Bay

## Lessons

- Beginner & Advanced
- Discounted Private Family
- Taster Session 1 Hour
- Supervised Practice
- Special Needs
- Surf Club
- Stand Up Paddle
- Surf Camp
- All equipment is provided

## Hire

- Surfboards & Wetsuits
- Stand Up Paddle Boards
- Single & Double Kayaks
- And Beach Shop Sales

**★ Guaranteed ★**  
We'll get you standing up and riding in your first lesson.

Discover the feeling...

07813 639 622 • [www.discoverysurf.com](http://www.discoverysurf.com) • [martin@discoverysurf.com](mailto:martin@discoverysurf.com)



## Join the South Devon holiday letting experts

With over 20 years' experience in holiday letting, our locally-based team are proud to offer expert knowledge, bespoke property management options and consistent year-round bookings. Contact us today to find out about the award-winning support we could offer you.

Find out more | 01548 802179

Order a free Owners Guide | [coastandcountry.co.uk](http://coastandcountry.co.uk)

Meet our team | Visit us in Salcombe or Dartmouth



[www.let-it-out.co.uk](http://www.let-it-out.co.uk)

**airbnb** co-hosting  
The flexible approach  
to letting your holiday home

Email:  
[info@let-it-out.co.uk](mailto:info@let-it-out.co.uk)

Gail Critchlow  
07889 628514

Liz Baker-James  
07388 673228

## SOUTH HAMS ELECTRICAL SUPPLIES

- SATELLITE & TV SERVICES
- Freeview Digital TV
- Freesat HD
- Aerial Installations
- Data/Telephone
- Aerial Repairs

Tel: 01548 559001  
Mobile: 07773 325316

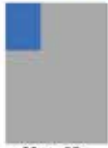
[Colinjarvis.cj12@outlook.com](mailto:Colinjarvis.cj12@outlook.com)  
Springfield, Loddiswell, TQ7 4EL





## Advertising Rates 2023

Local, independent A4  
community magazine



66mm x 95mm  
Colour:  
£120 per year  
£20 per month

Black&White  
£60 per year  
£10 per month



135mm x 95mm  
Colour:  
£240 per year  
£40 per month

Black&White  
£120 per year  
£20 per month



135mm x 188mm  
Colour:  
£360 per year  
£60 per month

Black&White  
Unavailable



### Interested in advertising?

Please email Bigbury News Editor

[bigburynewseditor@gmail.com](mailto:bigburynewseditor@gmail.com)

500 magazines published and delivered  
six times per year to households in Bigbury



# Coastal

Garden Services

Tree Surgery & Landscape Management

Contact: Andy Walker on 07793 056898

Tree and shrub work

Grass and hedge cutting

Fencing and planting

Working in the South Hams for over 10 years

Fully insured to £5million NPTC & RHS qualified

[www.coastalgardenservices.co.uk](http://www.coastalgardenservices.co.uk)



## Empowering you to think dog

121 Dog Training  
Behavioural Consultations  
Group Sessions and Classes  
General Obedience  
Fun ~ Friendly ~ Personal

[f stevecomleydogtrainerandk9behaviourist](https://www.facebook.com/stevecomleydogtrainerandk9behaviourist)



**JUST PLAY!**  
BY ENGLAND FOOTBALL

Walking Football – over 50yrs

Modbury Recreation Ground

Every Thursday (weather permitting) 1-2pm and 3-4pm

Contact Steve 07871310987 Email: [steve88804@outlook.com](mailto:steve88804@outlook.com)

# Sailing ahead.

For customers who expect more  
from their estate agent.



SOUTH HAMPS'  
LEADING  
ESTATE AGENT

**Marchand Petit**  
ESTATE AGENTS

[marchandpetit.co.uk](http://marchandpetit.co.uk)

DARTMOUTH 01803 839190 KINGSBRIDGE 01548 357518 MODBURY 01548 833163 NEWTON FERRERS 01752 873311 SALCOMBE 01548 844473 TOTNES 01803 847979 LETTINGS 01548 855599 PRIME WATERFRONT & COUNTRY HOUSE 01548 855599



# HOLYWELL STORES

**Premier**  
Amazing Value Locally

**Your one-stop shop**



**Holywell Stores & Post Office, St Ann's Chapel, Bigbury**



## OPENING HOURS

**SHOP** Mon to Sat: 7am - 7.30pm Sun: 8am - 5.30pm

**POST OFFICE** Mon to Fri: 9am - 5pm Sat: 9am - 1pm



Free car parking behind the shop Tel: 01548 810308  
email: holywellstores@outlook.com www.holywellstores.com



## The Journey's End Inn

A warm welcome awaits you in our  
**13th Century pub**  
Award Winning Food and Ales  
Large Beer Garden

Weds-Fri: 12 - 3pm & 6 - 11pm  
Saturday & Sunday: open all day  
Food available from 12 - 2pm & 6 - 8.30pm  
No food Sunday evenings  
01548 810205  
The Journey's End, Ringmore, TQ7 4HL

## Unwind Hair

*Bigbury*

*Ladies - Gents - Children*

**Experienced  
Stylist & Barber**  
Welcoming new clients to Unwind

Opening hours  
Monday 9-5  
Tuesday 9-5  
Thursday 9-5  
Friday 9-5  
Alternating Wednesdays & Saturdays

PLEASE CALL THE SALON DIRECTLY IF YOU  
WOULD LIKE A BOOKING ON THE DAY.



www.unwindinbigbury.co.uk

01548 810 000

unwindinbigbury@mail.com

07786860440

## BIGBURY PAINTERS & DECORATORS

- Residential ■ Commercial
- Interior ■ Exterior
- Trustworthy ■ Local
- Reliable ■ Reasonable Rates

### CONTACT

Alvin Lawrence

**M: 07709 867 275**

**T: 01548 810 479**

## KINGSBRIDGE EYE CARE GROUP

With over 30 Years of  
*Clinical Excellence*

Full eye health examinations  
Optomap, Ultra-wide digital retinal photography  
Glaucoma assessment  
Tailor made lenses and spectacles  
Luxury designer brands  
Free NHS sight test to all eligible patients

Retinal Photography  
In-depth visual field testing  
OCT scanning  
Available when recommended by the Optometrist.

**Call today and book your appointment.**

Modbury: 01548 830944

Kingsbridge: 01548 856854

Nigel Frost Optometrist 3, Chene Court Modbury PL21 0QJ  
Kingsbridge Eye Care No.1 The Promenade Kingsbridge TQ7 1JD